

3075 S. Loop West, Suite 720
 Eastman Plaza
 Beaumont, Texas 77701
 TEL: (409) 683-7400
 FAX: (409) 686-1146
 J. ROB CLARK, A.I.A.
 RONALD H. JONES, A.I.A.
 www.archalliance.com

ARCHITECT HAS REVIEWED THE CONSULTANT'S WORK AND COORDINATED IT WITH THE OVERALL PROJECT

UNITED CHRISTIAN ACADEMY
 First Pentecostal Church
 Highway 69
 Nederland, TX 77627

ISSUED FOR SCHEMATIC DESIGN	<input type="checkbox"/>
DATE:	
DESIGN DEVELOPMENT	<input type="checkbox"/>
DATE:	
BIDS & CONSTRUCTION	<input checked="" type="checkbox"/>
DATE: 8/02/2021	
REVISION:	DATE: MM-DD-YYYY
REVISION:	DATE: MM-DD-YYYY
REVISION:	DATE: MM-DD-YYYY

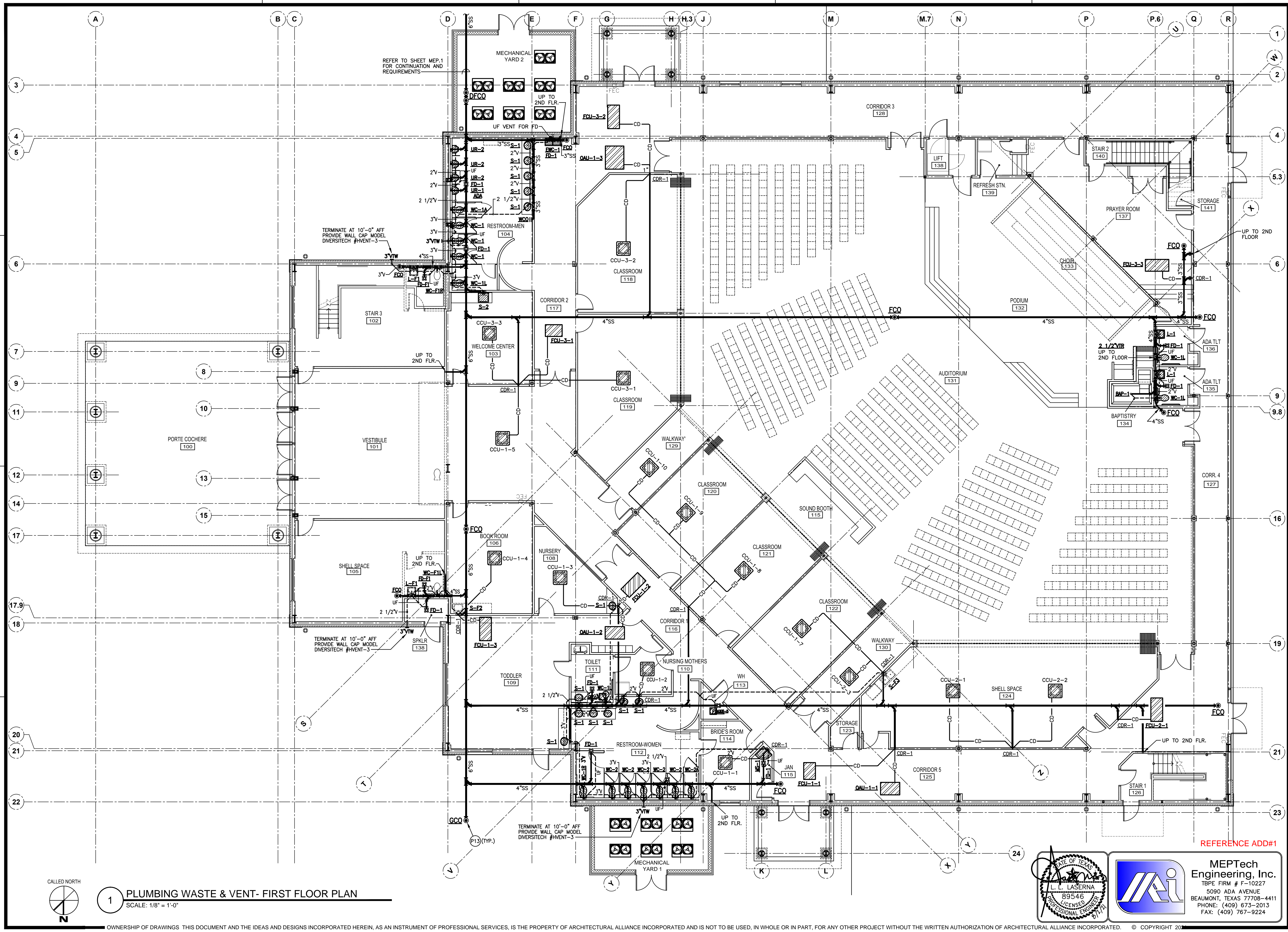
DRAWINGS SHEET TITLE

PLUMBING WASTE & VENT FIRST FLOOR PLAN

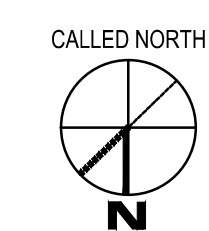
SHEET NUMBER

P.1

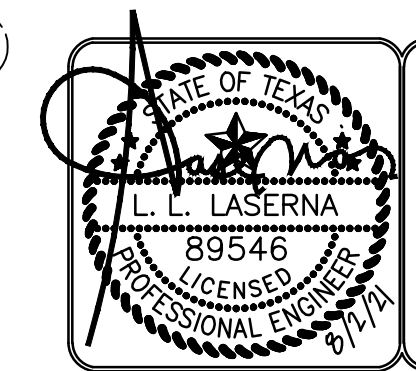
20105 PROJECT NUMBER



1 PLUMBING WASTE & VENT- FIRST FLOOR PLAN
 SCALE: 1/8" = 1'-0"

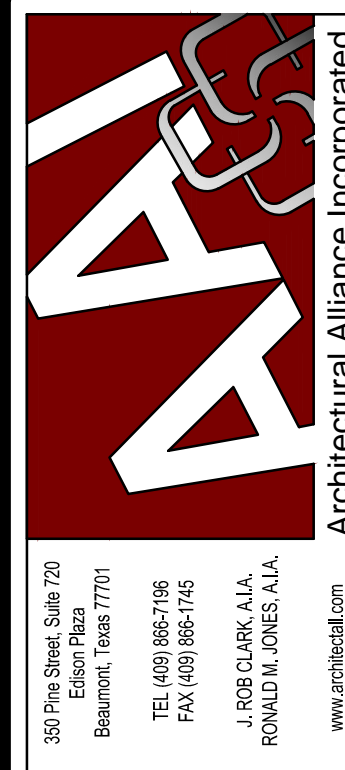


OWNERSHIP OF DRAWINGS THIS DOCUMENT AND THE IDEAS AND DESIGNS INCORPORATED HEREIN, AS AN INSTRUMENT OF PROFESSIONAL SERVICES, IS THE PROPERTY OF ARCHITECTURAL ALLIANCE INCORPORATED AND IS NOT TO BE USED, IN WHOLE OR IN PART, FOR ANY OTHER PROJECT WITHOUT THE WRITTEN AUTHORIZATION OF ARCHITECTURAL ALLIANCE INCORPORATED. © COPYRIGHT 2021



MEPTech Engineering, Inc.
 TBE FIRM # F-10227
 5090 ADA AVENUE
 BEAUMONT, TEXAS 77708-4411
 PHONE: (409) 673-2013
 FAX: (409) 767-9224

REFERENCE ADD#1



3075 Park Street, Suite 720
Beaumont, Texas 77701
TEL: (409) 683-7348
FAX: (409) 686-1146
J. ROB CLARK, A.I.A.
RONALD H. JONES, A.I.A.
www.archalliance.com

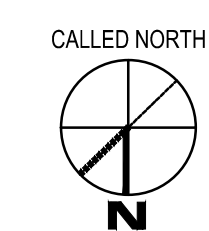
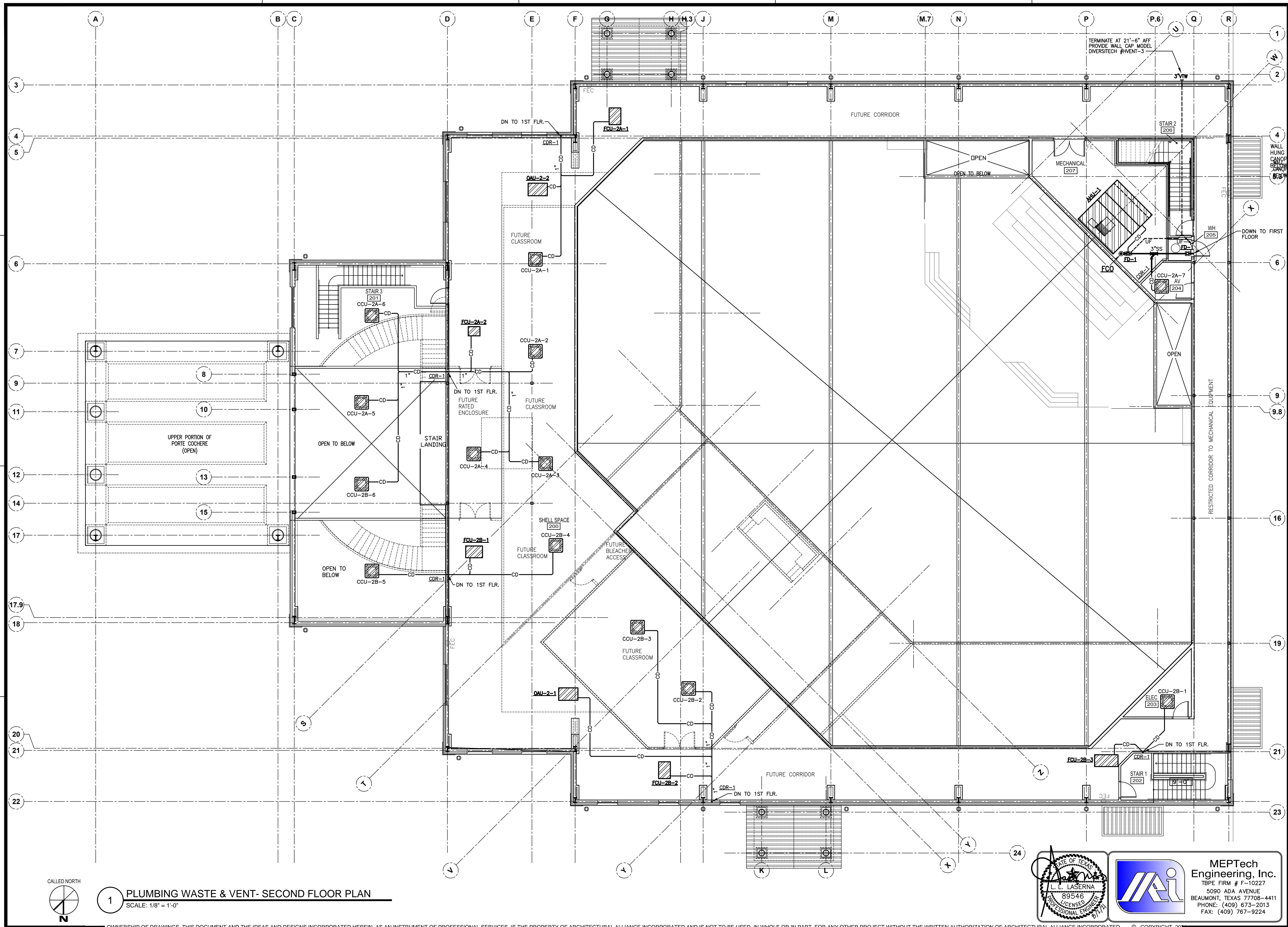
ARCHITECT HAS REVIEWED THE CONSULTANT'S WORK AND COORDINATED IT WITH THE OVERALL PROJECT

UNITED CHRISTIAN ACADEMY
First Pentecostal Church
Highway 69
Nederland, TX 77627

ISSUED FOR SCHEMATIC DESIGN
DATE: _____
DESIGN DEVELOPMENT
DATE: _____
BIDS & CONSTRUCTION
DATE: 8/02/2021
REVISION: MM-DD-YYYY
DATE: MM-DD-YYYY
REVISION: MM-DD-YYYY
DATE: MM-DD-YYYY
REVISION: MM-DD-YYYY
DATE: MM-DD-YYYY

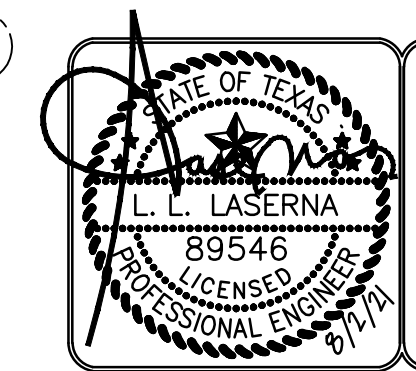
DRAWINGS SHEET TITLE
PLUMBING WASTE & VENT SECOND FLOOR PLAN

SHEET NUMBER
P.2
PROJECT NUMBER
20105



1 PLUMBING WASTE & VENT- SECOND FLOOR PLAN
SCALE: 1/8" = 1'-0"

OWNERSHIP OF DRAWINGS THIS DOCUMENT AND THE IDEAS AND DESIGNS INCORPORATED HEREIN, AS AN INSTRUMENT OF PROFESSIONAL SERVICES, IS THE PROPERTY OF ARCHITECTURAL ALLIANCE INCORPORATED AND IS NOT TO BE USED, IN WHOLE OR IN PART, FOR ANY OTHER PROJECT WITHOUT THE WRITTEN AUTHORIZATION OF ARCHITECTURAL ALLIANCE INCORPORATED. © COPYRIGHT 2021



MEPTech Engineering, Inc.
TBPE FIRM # F-10227
5090 ADA AVENUE
BEAUMONT, TEXAS 77708-4411
PHONE: (409) 673-2013
FAX: (409) 767-9224

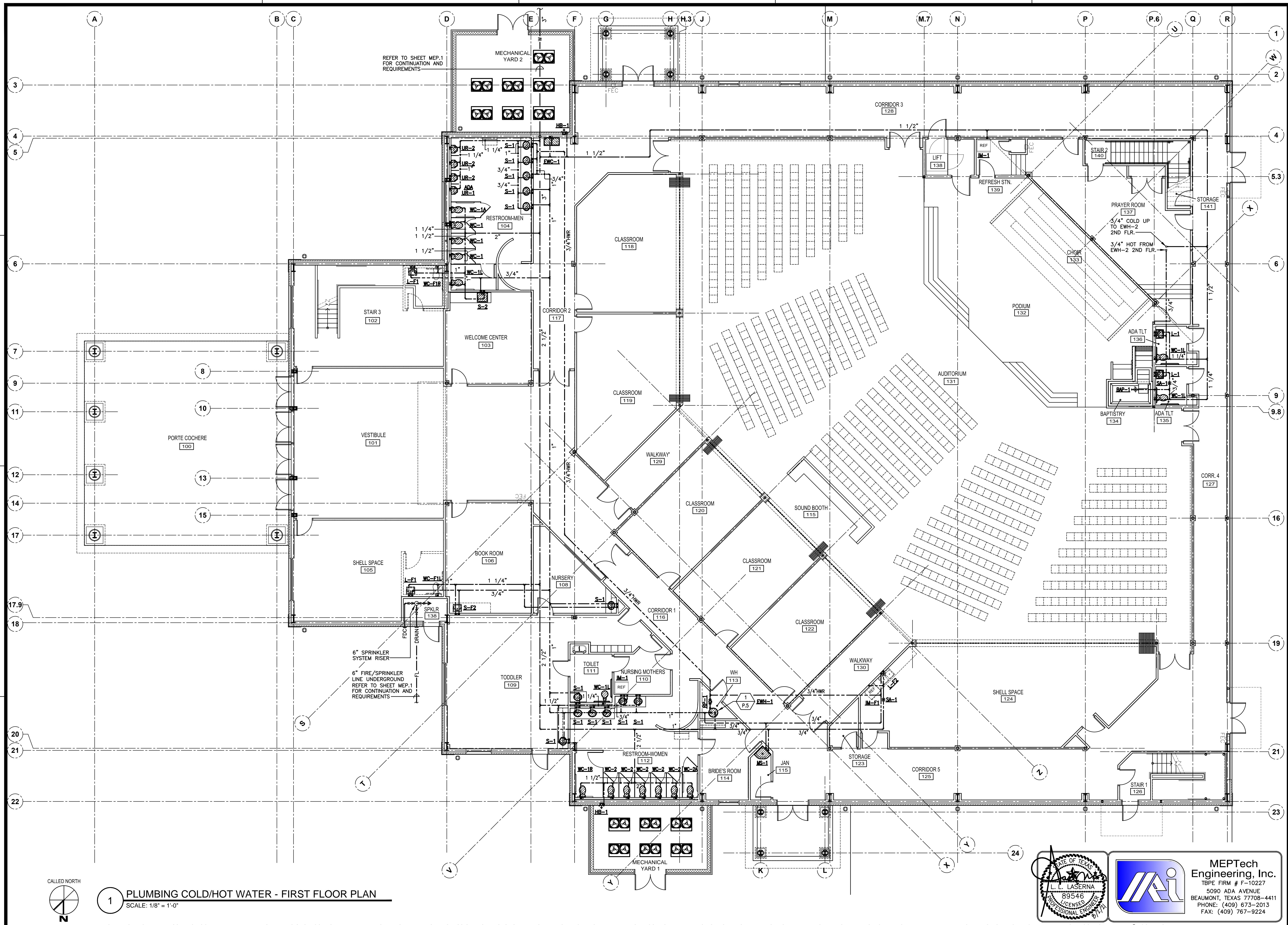
ARCHITECT HAS REVIEWED THE CONSULTANT'S WORK AND COORDINATED IT WITH THE OVERALL PROJECT

Highway 69
Nederland, TX 77627

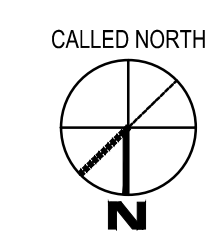
UNITED CHRISTIAN ACADEMY
First Pentecostal Church

ISSUED FOR SCHEMATIC DESIGN	<input type="checkbox"/>
DATE:	
DESIGN DEVELOPMENT	<input type="checkbox"/>
DATE:	
BIDS & CONSTRUCTION	<input checked="" type="checkbox"/>
DATE: 8/02/2021	
REVISION:	DATE: MM-DD-YYYY
REVISION:	DATE: MM-DD-YYYY
REVISION:	DATE: MM-DD-YYYY

DRAWINGS SHEET TITLE	
PLUMBING COLD/HOT WATER FIRST FLOOR PLAN	
SHEET NUMBER	P.3
PROJECT NUMBER	20105

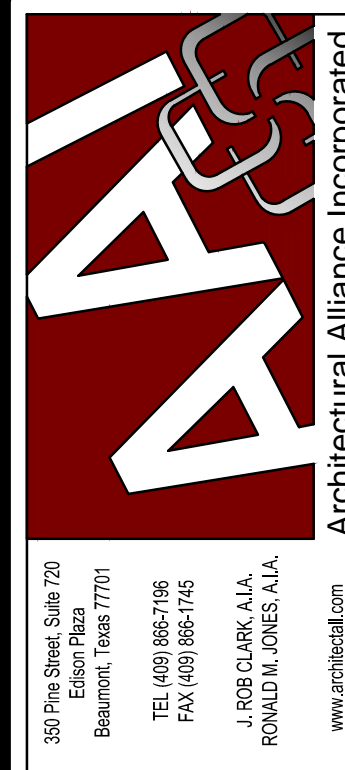


1 PLUMBING COLD/HOT WATER - FIRST FLOOR PLAN
SCALE: 1/8" = 1'-0"



MEPTech Engineering, Inc.
TBE FIRM # F-10227
5090 ADA AVENUE
BEAUMONT, TEXAS 77708-4411
PHONE: (409) 673-2013
FAX: (409) 767-9224

L. L. LASERNA
89546
LICENSED PROFESSIONAL ENGINEER
07174



3075 N. Loop West, Suite 720
 Beaumont, Texas 77701
 TEL: (409) 898-3146
 FAX: (409) 898-1146
 J. ROB CLARK, A.I.A.
 RONALD H. JONES, A.I.A.
 www.architect.com

ARCHITECT HAS REVIEWED
 THE CONSULTANT'S WORK
 AND COORDINATED IT WITH
 THE OVERALL PROJECT

UNITED CHRISTIAN ACADEMY

First Pentecostal Church

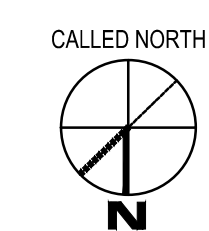
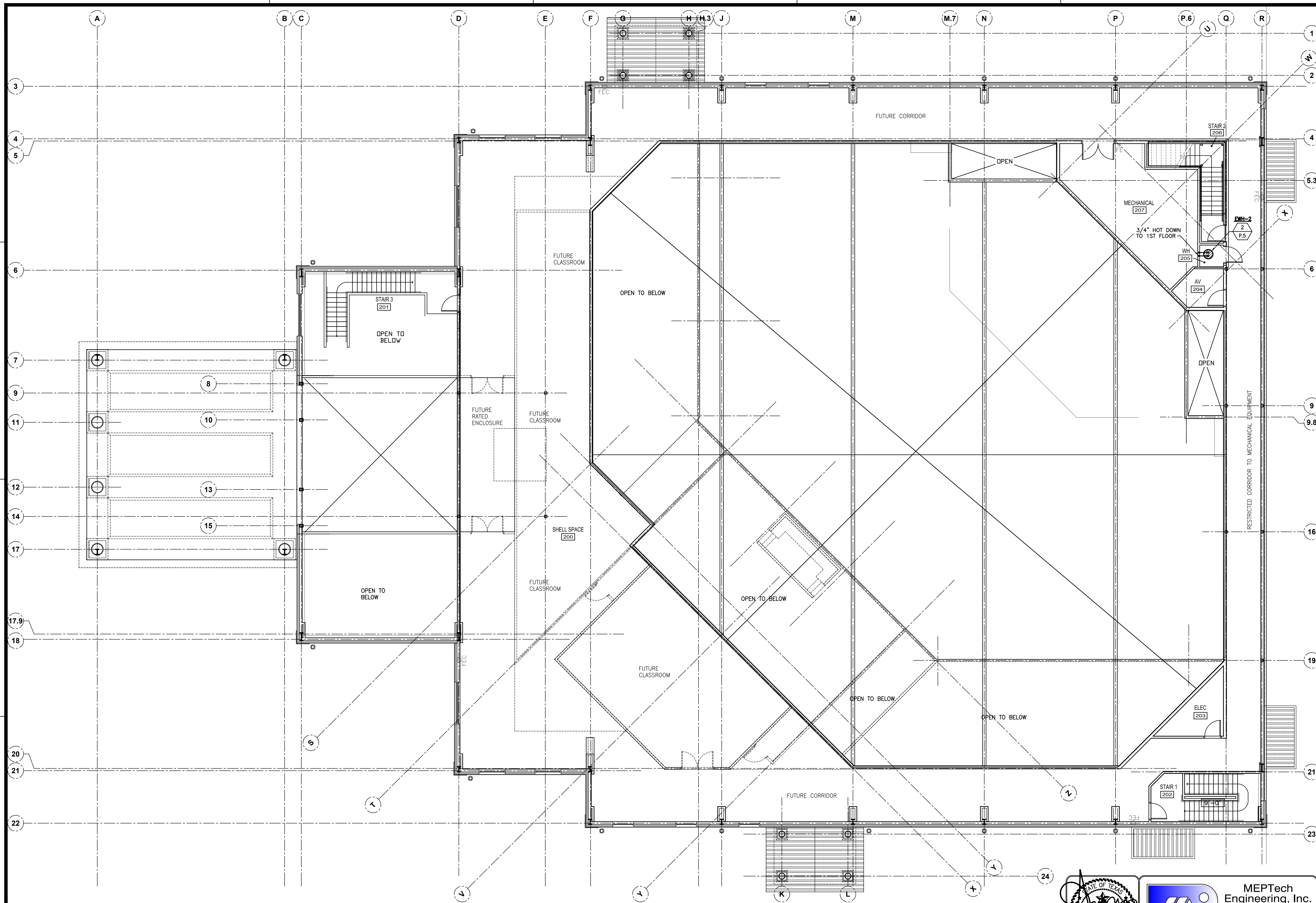
Needland, TX 77627

Highway 69

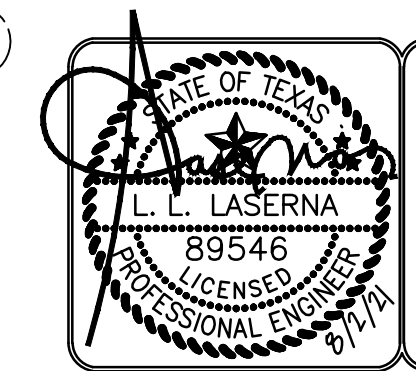
ISSUED FOR SCHEMATIC DESIGN	<input type="checkbox"/>
DATE:	
DESIGN DEVELOPMENT	<input type="checkbox"/>
DATE:	
BIDS & CONSTRUCTION	<input checked="" type="checkbox"/>
DATE: 8/02/2021	
REVISION:	
DATE: MM-DD-YYYY	
REVISION:	
DATE: MM-DD-YYYY	
REVISION:	
DATE: MM-DD-YYYY	

DRAWINGS SHEET TITLE
**PLUMBING
 COLD/HOT WATER
 SECOND FLOOR
 PLAN**

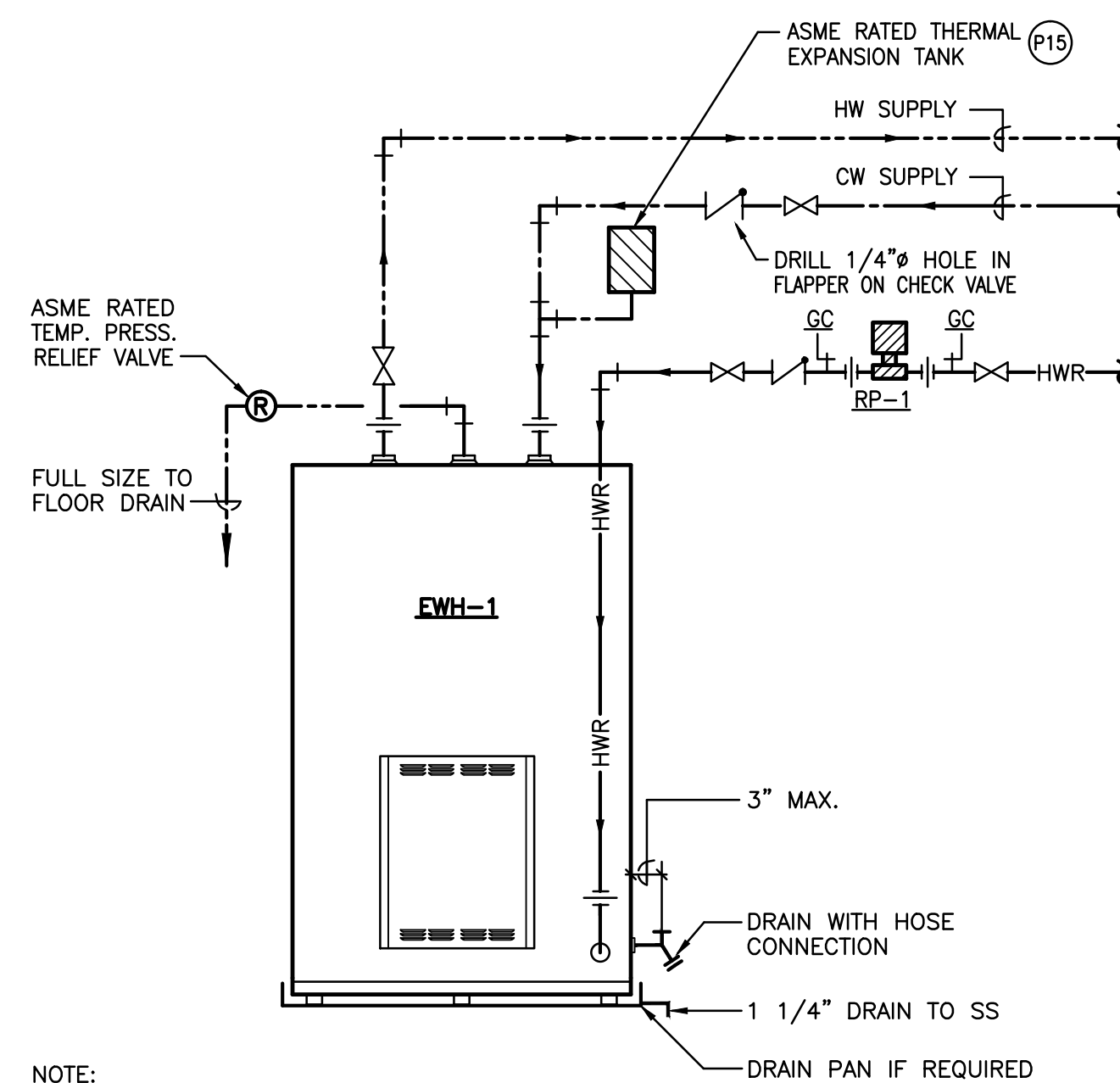
SHEET NUMBER
P.4
 20105
 PROJECT NUMBER



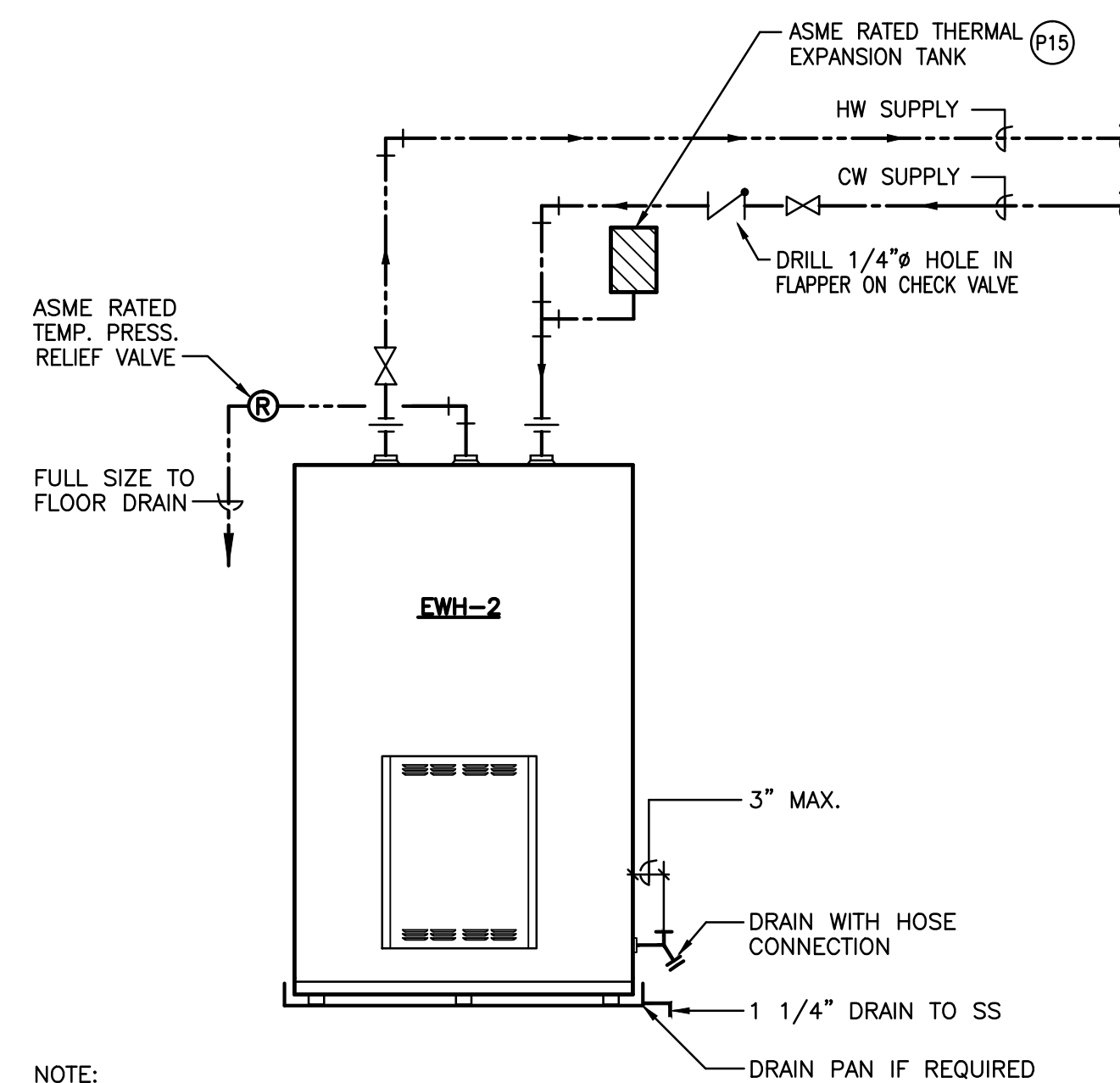
1 PLUMBING COLD/HOT WATER - SECOND FLOOR PLAN
 SCALE: 1/8" = 1'-0"



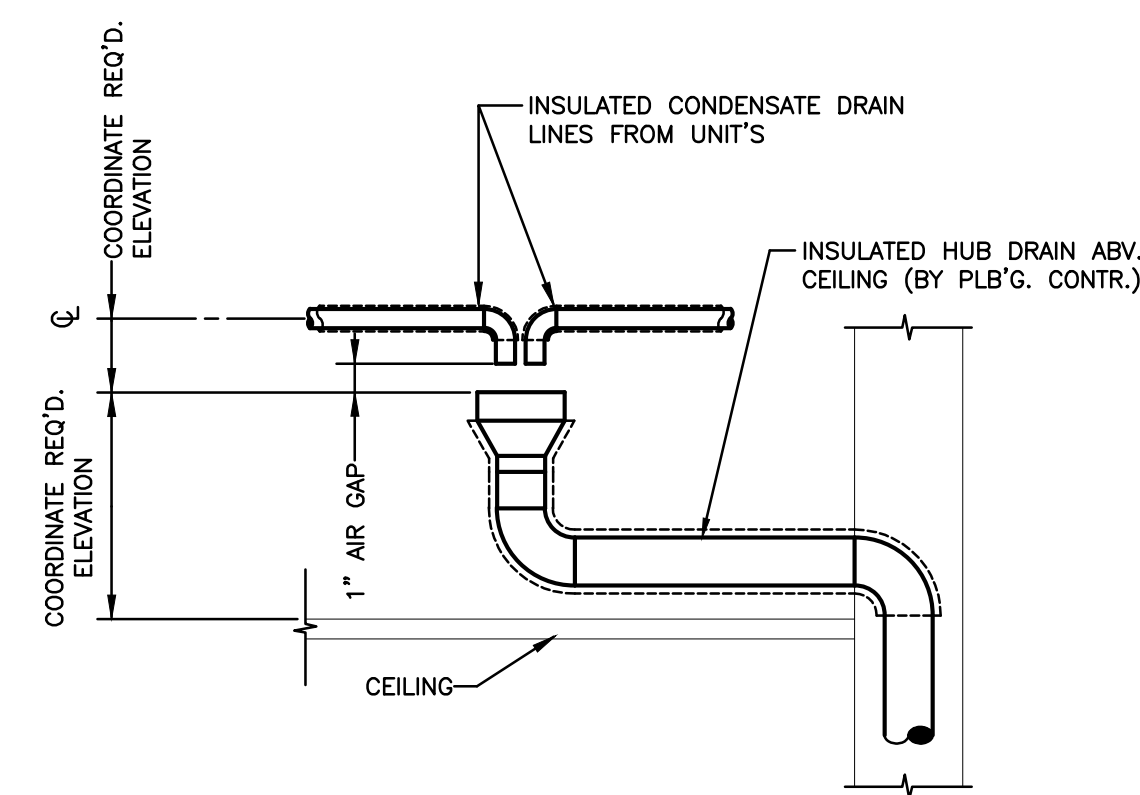
MEPTech Engineering, Inc.
 TBPE FIRM # F-10227
 5090 ADA AVENUE
 BEAUMONT, TEXAS 77708-4411
 PHONE: (409) 673-2013
 FAX: (409) 767-9224



1 ELECTRIC WATER HEATER EWH-1 DETAIL
SCALE: NOT TO SCALE



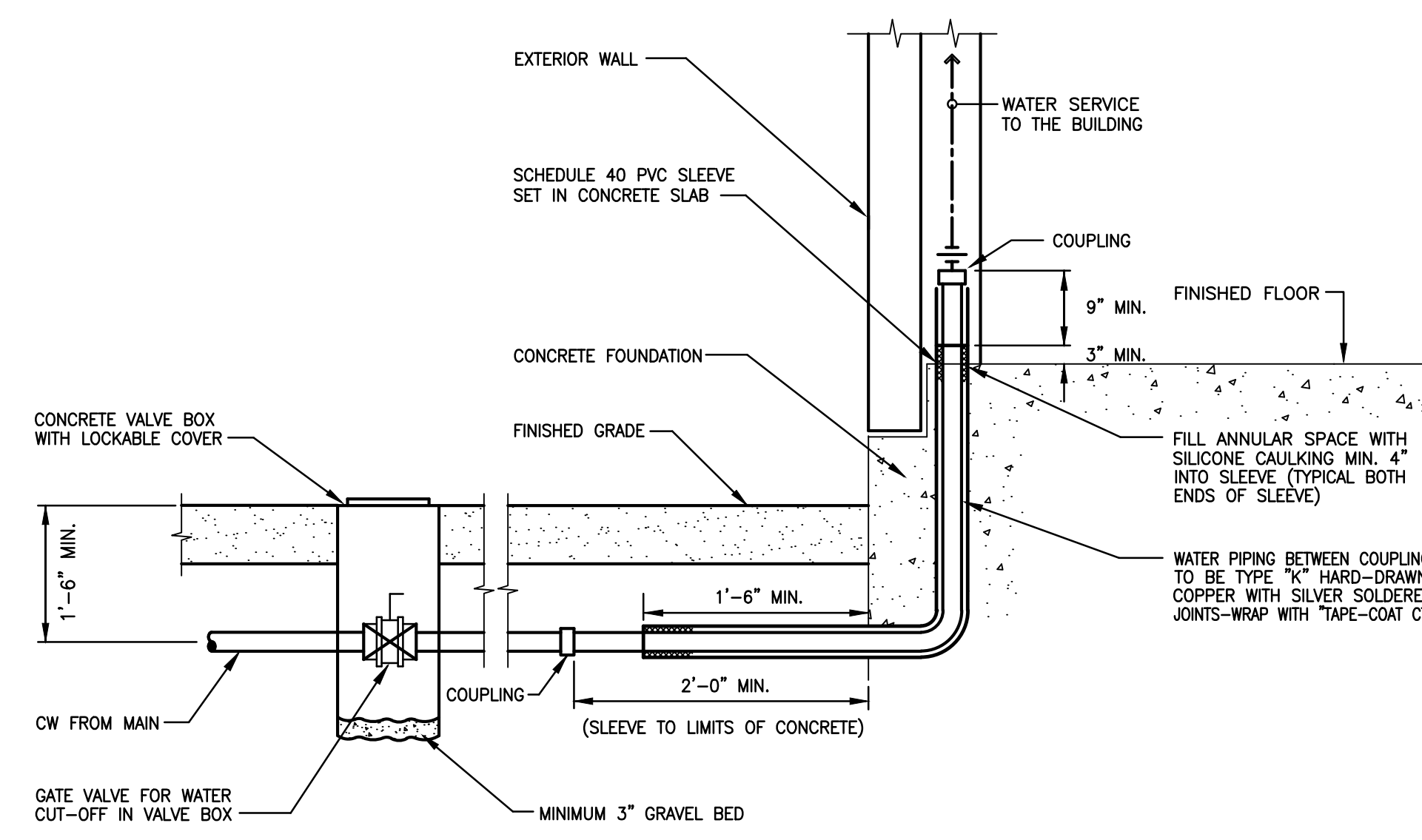
2 ELECTRIC WATER HEATER EWH-2 DETAIL
SCALE: NOT TO SCALE



3 CONDENSATE DRAIN PIPING TERMINATION
SCALE: NOT TO SCALE

PLUMBING SYMBOLS			
	REFERENCE TO DETAIL AND SHEET NUMBER		CLEANOUT IN FINISHED FLOOR
	POINT OF CONNECTION NEW TO EXISTING		CLEANOUT IN FINISHED GRADE
	EQUIPMENT FURNISHED BY DIVISION 15		CLEANOUT IN WALL
	EQUIPMENT FURNISHED BY OTHER DIVISIONS		FLOOR DRAIN
AFF	ABOVE FINISHED FLOOR		THERMOMETER
UF	UNDER FLOOR		VENT THRU WALL
---	DOMESTIC COLD WATER		RECESSED HOSE BIBB
---	DOMESTIC HOT WATER: 120°F		DRAIN VALVE WITH HOSE THREAD
↑	PIPE RISER DOWN		GATE VALVE
↓	PIPE RISER UP		BALL VALVE
---HWR---	HOT WATER RETURN		CHECK VALVE
---	SANITARY SEWER LINE		UNION
---CD---	CONDENSATE DRAIN PIPING		RELIEF VALVE
---	VENT LINE		SHOCK ARRESTOR
			P-TRAP

- PLUMBING NOTES**
- (P1) CONFIRM AND COORDINATE EXACT LOCATION OF ALL FLOOR DRAINS WITH ARCHITECTURAL, STRUCTURAL ELEMENTS, HVAC EQUIPMENT AND/OR ELECTRICAL SYSTEMS PRIOR TO MAKE FINAL INSTALLATION. SAW CUT AND PATCH TO MATCH EXISTING CONCRETE SLAB FOR ALL PIPING ROUTED UNDER EXISTING CONCRETE SLAB.
 - (P2) ALL EXTERIOR BRACKETS, CLAMPS AND HANGERS SHALL BE GALVANIZED. COAT ALL ENDS AND WELDS WITH "ZRC" COLD GALVANIZING COMPOUND. PROVIDE SHIELDING AT ALL DISSIMILAR METAL CONTACT. ALL MISCELLANEOUS INTERIOR BRACKETS SHALL BE SHOP PRIMED UNLESS GALVANIZED OR STAINLESS STEEL.
 - (P3) PROVIDE NEOPRENE ROPE SEAL WITH SILICONE CAULKING TO FORM A WATERTIGHT SEAL WHERE SERVICE MOP SINK ABUTS WALL.
 - (P4) LOCATE FULL PORT VALVES 12" MAXIMUM ABOVE CEILING AND ACCESSIBLE FOR SERVICE. FIELD COORDINATE EXACT LOCATION WITH MECHANICAL AND ELECTRICAL DRAWINGS PRIOR TO MAKE FINAL INSTALLATION.
 - (P5) REFER TO SHEET P.5 MINIMUM LINE SIZE SCHEDULE FOR LINE SIZES NOT SHOWN ON FLOOR PLANS.
 - (P6) INSTALL 12" AIR CHAMBER FOR DOMESTIC HOT AND COLD WATER PIPING AT SINGLE PLUMBING FIXTURE.
 - (P7) PROVIDE TYPE "K" COPPER UNDER SLAB WITH CORROSION PROTECTION AS SPECIFIED/SCHEDULED AND TYPE "L" COPPER ABOVE GROUND FOR WATER PIPING.
 - (P8) ALL PLUMBING FIXTURES INDICATED ON FLOOR PLANS OR SCHEDULED FOR ADA MUST COMPLY WITH ADA HEIGHTS AND REQUIREMENTS. CONFIRM WITH ARCHITECTURAL DRAWINGS. INSULATE P-TRAP, TAILPIECE AND WATER SUPPLIES OF ALL ADA COMPLIANT PLUMBING FIXTURES WITH HANDI-LAV INSULATION OR EQUAL.
 - (P9) PROVIDE NEW COLD WATER CUTOFF VALVE WITH CAST IRON TOP WITH MARKED "WATER" AND IN HEAVY DUTY BOX. REFER TO CIVIL DRAWINGS FOR REQUIREMENTS.
 - (P10) LOCATE WATER BACKFLOW PREVENTOR CLOSE TO WATER METER TO COMPLY WITH CITY OF BEAUMONT LOCATION REQUIREMENTS. FIELD CONFIRM FINAL LOCATION PRIOR TO MAKE FINAL INSTALLATION WITH CITY OF BEAUMONT WATER UTILITIES. REFER TO CIVIL DRAWING SHEET FOR LOCATION.
 - (P11) PROVIDE HYDROTROL SHOCK ARRESTOR EQUAL TO MIFAB OR ZURN Z1700, MODEL #300 IN COLD WATER LINE, 33-60 PU. INSTALL STAINLESS STEEL 12" x 12" ACCESS FOR SERVICING.
 - (P12) INSTALL AND CONNECT 1" CONDENSATE DRAIN FROM AHUs TO SANITARY SEWER AS SHOWN ON THIS SHEET. FIELD COORDINATE AND CONFIRM EXACT CONNECTION WITH MECHANICAL CONTRACTOR.
 - (P13) PUT TOP OF EXTERIOR CLEANOUTS IN 12" x 12" x 6" THICK CONCRETE PAD FLUSH WITH FINISHED GRADE. FIELD CONFIRM EXACT LOCATION OF EXTERIOR CLEANOUTS PRIOR TO MAKE FINAL INSTALLATION.
 - (P14) PLUMBING PIPING INSTALLATION MUST BE WITHIN 3 FEET OF ALL ELECTRICAL PANELS AND HVAC EQUIPMENT OR PER CODES.
 - (P15) INSTALL ASME THERMAL EXPANSION TANK EQUAL TO WATTS MODEL PET-12-M1 AT COLD WATER CONNECTION TO ELECTRIC WATER HEATER.



4 DOMESTIC WATER ENTRY DETAIL
SCALE: NOT TO SCALE

UNITED CHRISTIAN ACADEMY BUILDING SANITARY SEWER CALCULATION		
SPACE TYPE	FIXTURE UNIT QUANTITY	TOTAL DRAINAGE FIXTURE UNIT
UNITED CHRISTIAN ACADEMY	146	146.0
TOTAL SPACE DRAINAGE FIXTURE UNIT		146.0
PIPE SIZE AT BUILDING SPACE EXIT (1/8 INCH SLOPE PER FOOT)		4"
PIPE SIZE AT BUILDING SPACE TO EXIT SELECTED		6"

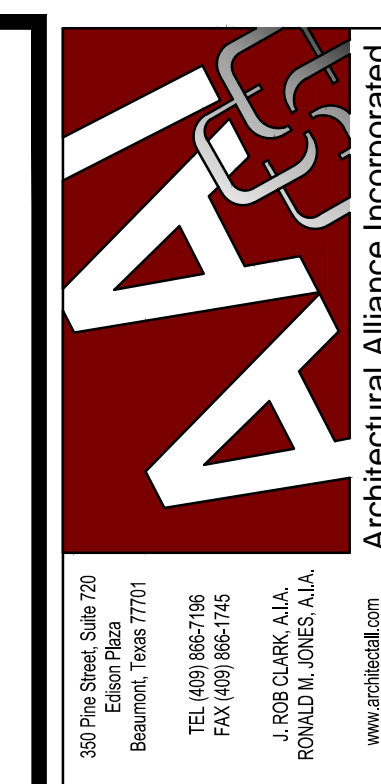
NOTES:
1.) CALCULATION BASED ON 2015 INTERNATIONAL PLUMBING CODE, TABLES 709.1 & 710.1.

UNITED CHRISTIAN ACADEMY BUILDING DOMESTIC WATER CALCULATION		
SPACE TYPE	PRIVATE	
	FIXTURE UNIT QUANTITY	TOTAL WSFU VALUES
UNITED CHRISTIAN ACADEMY	44	182.0
TOTAL WATER SUPPLY FIXTURE UNITS		182.0

UNIT TYPE	PRIVATE	
	FIXTURE QUANTITY	TOTAL WSFU VALUES
1ST HOSE BIBB	2	5.0
TOTAL WATER SUPPLY FIXTURE UNITS		5.0
GRAND TOTAL FIXTURE UNITS PER SPACE		187.0
TOTAL GPM FLOW RATE, 2015 IPC, TABLE E103.3(3)		90.0 GPM
PIPE SIZE AT SPACE ENTRY (3" AT 350 FT.) SELECTED		3"

NOTES:
1.) CALCULATION BASED ON 2015 INTERNATIONAL PLUMBING CODE, TABLES E103.3(2) & E201.1

- SPRINKLER SYSTEM NOTES**
- (SS1) CONNECT SPRINKLER SYSTEM TO 4" WET PIPE SYSTEM WITH QUICK RESPONSE SPRINKLERS, CONTROL VALVE, TAMPER SWITCH, FLOW SWITCH, DRAIN AND FDC, AND SHALL BE DESIGNED AND INSTALLED IN ACCORDANCE WITH NFPA 13 AND MEET LOCAL FIRE MARSHALL REQUIREMENTS.
 - (SS2) SPRINKLER SYSTEM SHALL BE HYDRAULICALLY CALCULATED PER NFPA 13 11.2.3.2.3.
 - (SS3) 1"-2" PIPE TO BE ALLED BLT BLACK LIGHTWALL THREADABLE PIPE WITH STANDARD BLACK CAST FITTINGS. 2 1/2"-4" PIPE TO BE ALLED DYN-FLOW WITH WELDED THREAD-0-LETS, CLAMP TEES AND GROOVED FITTINGS AND COUPLINGS.
 - (SS4) SPRINKLER SYSTEM WORK BEGINS FROM 4" SPRINKLER PIPE.
 - (SS5) SPRINKLER SYSTEM CONTRACTOR MUST SUBMIT DRAWINGS AND SUBMITTALS PRIOR TO INSTALLATION. COORDINATE LOCATION OF ALL SPRINKLER HEADS AND ROUTING OF PIPING WITH ARCHITECTURAL REFLECTED CEILING PLAN, ELEVATIONS, SECTIONS AND STRUCTURAL DRAWINGS.
 - (SS6) CONTACT COASTAL SPRINKLER, INC. AT (409) 842-0721/(409) 284-0680 FOR QUOTES AND THE REQUIREMENTS OF SPRINKLER SYSTEM.



ARCHITECT HAS REVIEWED THE CONSULTANT'S WORK AND COORDINATED IT WITH THE OVERALL PROJECT

UNITED CHRISTIAN ACADEMY
First Pentecostal Church
Needland, TX 77627
Highway 69

ISSUED FOR SCHEMATIC DESIGN
DATE: _____
DESIGN DEVELOPMENT
DATE: _____
BIDS & CONSTRUCTION
DATE: 8/02/2021
REVISION: DATE: MM-DD-YYYY
REVISION: DATE: MM-DD-YYYY
REVISION: DATE: MM-DD-YYYY


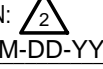
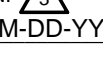
DRAWINGS SHEET TITLE
PLUMBING NOTES, SYMBOLS, DETAILS & SS/DW CALCULATIONS

SHEET NUMBER
P.5
20105
PROJECT NUMBER

MEPTech Engineering, Inc.
TBE FIRM # F-10227
5090 ADA AVENUE
BEAUMONT, TEXAS 77708-4411
PHONE: (409) 673-2013
FAX: (409) 767-9224

ARCHITECT HAS REVIEWED THE CONSULTANT'S WORK AND COORDINATED IT WITH THE OVERALL PROJECT

UNITED CHRISTIAN ACADEMY
 First Pentecostal Church
 Nederland, TX 77627
 Highway 69

ISSUED FOR SCHEMATIC DESIGN
 DATE: _____
 DESIGN DEVELOPMENT
 DATE: _____
 BIDS & CONSTRUCTION
 DATE: 8/02/2021
 REVISION:  _____
 DATE: MM-DD-YYYY
 REVISION:  _____
 DATE: MM-DD-YYYY
 REVISION:  _____
 DATE: MM-DD-YYYY

DRAWINGS SHEET TITLE
PLUMBING SCHEDULES

SHEET NUMBER
P.6
 20105
 PROJECT NUMBER

PLUMBING FIXTURE BRANCH CONNECTION SCHEDULE						
FIXTURE	MARK	HOT WATER	COLD WATER	WASTE/DRAIN	VENT	
WATER CLOSET-FLUSH VALVE	WC-1,2,1A,2A,1L,1R	----	1"	4"	2"	
FUTURE WATER CLOSET-FLUSH VALVE	WC-F1R,F1L	----	1"	4"	2"	
URINAL	UR-1ADA,2	----	3/4"	2"	2"	
LAVATORY	L-1	1/2"	1/2"	1 1/2"	1 1/2"	
FUTURE LAVATORY	L-F1	1/2"	1/2"	1 1/2"	1 1/2"	
SINK	S-1,2	1/2"	1/2"	1 1/2"	1 1/2"	
FUTURE SINK	S-F2,F3	1/2"	1/2"	1 1/2"	1 1/2"	
ICE MAKER	IM-1	----	1/2"	----	----	
FUTURE ICE MAKER	IM-F1	----	1/2"	----	----	
ELECTRIC WATER COOLER	EW-1	----	1/2"	2"	1 1/2"	
FLOOR DRAIN	FD-1	----	----	3"	2" (UF)	
FUTURE FLOOR DRAIN	FD-F1	----	----	3"	2" (UF)	
CLEANOUT	FCO,DFCO,GCO,WCO	----	----	3"	2"	
MOP SINK	MS-1	1/2"	1/2"	3"	2"	
HOSE BIBB	HB-1	----	3/4"	----	----	
CONDENSATE DRAIN RECEIVER	CDR-1	----	----	2 1/2"	1 1/2"	
ELECTRIC WATER HEATER	EW-1	1"	1"	----	----	
ELECTRIC WATER HEATER	EW-2	3/4"	3/4"	----	----	
BAPTISTRY	BAP-1	----	1/2"	2"	1 1/2"	
CEILING CASSETTE UNIT	CCU	----	----	3/4"	----	
FAN COIL UNIT	FCU	----	----	1-1/4"	----	
OUTSIDE AIR UNIT	OAU	----	----	1"	----	
AIR HANDLING UNIT	AHU	----	----	1-1/2"	----	

NOTE:
 PIPE SIZES SHOWN ARE MINIMUM.

PLUMBING FIXTURE SCHEDULE							
MARK	MANUFACTURER	MODEL NO.	REMARKS	MARK	MANUFACTURER	MODEL NO.	REMARKS
WC-1R ADA	AMERICAN STANDARD	3461.660 3461.001.020	VITREOUS WHITE CHINA FLOOR MOUNT MADERA 17"H ELONGATED FLUSHOMETER/SELECTRONIC FLUSH VALVE TOILET, 1.6 GPF LOW CONSUMPTION, TOP SPUD, FLOOR OUTLET AND EVERCLEAN. ADA COMPLIANT. RIGHT HANDED FLUSH LEVER OR WIDE SIDE OF STALL.	S-2	ELKAY	LRAD1918603	LUSTERTONE 19"x18"x6 1/2" DEEP 18 GA. STAINLESS STEEL AND SELF-RIMMING WITH 3 HOLES 4" ON CENTERS SINGLE BOWL SINK. ADA COMPLIANT.
	AMERICAN STANDARD	6065.161 5905.100	SELECTRONIC FLUSH VALVE WITH FACTORY-INSTALLED CR-P2 LITHIUM BATTERY, SENSOR "HANDS FREE" OPERATION AND MANUAL OVERRIDE BUTTON. EVERCLEAN SEAT EXTRA HEAVY DUTY OPEN FRONT LESS COVER.		AMERICAN STANDARD	6530.170.002	MONTERREY TWO-HANDLE 8" WIDESPREAD LAVATORY FAUCET WITH GOOSENECK SPOUT AND WRIST BLADE HANDLES.
WC-1L,1A,2A ADA	AMERICAN STANDARD	3461.660 3461.001.020	VITREOUS WHITE CHINA FLOOR MOUNT MADERA 17"H ELONGATED FLUSHOMETER/SELECTRONIC FLUSH VALVE TOILET, 1.6 GPF LOW CONSUMPTION, TOP SPUD, FLOOR OUTLET AND EVERCLEAN. ADA COMPLIANT. LEFT HANDED FLUSH LEVER OR WIDE SIDE OF STALL.		McGUIRE	151A	STAINLESS STEEL BASKET STRAINER WITH 1 1/2"x4" SEAMLESS BRASS TAILPIECE, LOCK AND COUPLING NUTS.
	AMERICAN STANDARD	6065.161 5905.100	SELECTRONIC FLUSH VALVE WITH FACTORY-INSTALLED CR-P2 LITHIUM BATTERY, SENSOR "HANDS FREE" OPERATION AND MANUAL OVERRIDE BUTTON. EVERCLEAN SEAT EXTRA HEAVY DUTY OPEN FRONT LESS COVER.		McGUIRE	2165CCLK	1/2"x3/8" ANGLE HOT AND COLD WATER SUPPLY STOPS.
	AMERICAN STANDARD	3451.660 3451.001.020	VITREOUS WHITE CHINA FLOOR MOUNT MADERA 15"H ELONGATED FLUSHOMETER/SELECTRONIC FLUSH VALVE TOILET, 1.6 GPF LOW CONSUMPTION, TOP SPUD, FLOOR OUTLET AND EVERCLEAN. STANDARD HEIGHT. LEFT HANDED FLUSH LEVER OR WIDE SIDE OF STALL.		McGUIRE	8912CBECO	1 1/2" 17 GA. CHROME PLATED P-TRAP WITH CLEANOUT AND OUTLET TO WALL WITH ESCUTCHEON.
	AMERICAN STANDARD	6065.161 5905.100	SELECTRONIC FLUSH VALVE WITH FACTORY-INSTALLED CR-P2 LITHIUM BATTERY, SENSOR "HANDS FREE" OPERATION AND MANUAL OVERRIDE BUTTON. EVERCLEAN SEAT EXTRA HEAVY DUTY OPEN FRONT LESS COVER.	IM-1	OATEY	38681	ICE MAKER/REF. 6"x6"x3 1/2" OUTLET BOX 1/4 TURN BRASS BALL VALVE COPPER SWEAT.
	AMERICAN STANDARD	3451.660 3451.001.020	VITREOUS WHITE CHINA FLOOR MOUNT MADERA 15"H ELONGATED FLUSHOMETER/SELECTRONIC FLUSH VALVE TOILET, 1.6 GPF LOW CONSUMPTION, TOP SPUD, FLOOR OUTLET AND EVERCLEAN. STANDARD HEIGHT. LEFT HANDED FLUSH LEVER OR WIDE SIDE OF STALL.	MS-1	AMERICAN STANDARD	7741.000	FLORWELL ENAMELED CAST IRON MATERIAL, CORNER, GLOSSY PORCELAIN FINISH.
	AMERICAN STANDARD	6065.161 5905.100	SELECTRONIC FLUSH VALVE WITH FACTORY-INSTALLED CR-P2 LITHIUM BATTERY, SENSOR "HANDS FREE" OPERATION AND MANUAL OVERRIDE BUTTON. EVERCLEAN SEAT EXTRA HEAVY DUTY OPEN FRONT LESS COVER.		E L MUSTEE & SONS	65.700	32" VINYL HOSE WITH CHROME HOOK.
	AMERICAN STANDARD	3451.660 3451.001.020	VITREOUS WHITE CHINA FLOOR MOUNT MADERA 15"H ELONGATED FLUSHOMETER/SELECTRONIC FLUSH VALVE TOILET, 1.6 GPF LOW CONSUMPTION, TOP SPUD, FLOOR OUTLET AND EVERCLEAN. STANDARD HEIGHT. RIGHT HANDED FLUSH LEVER OR WIDE SIDE OF STALL.		AMERICAN STANDARD	7745.811	REMOVABLE VINYL BUMPER GUARD.
	AMERICAN STANDARD	6065.161 5905.100	SELECTRONIC FLUSH VALVE WITH FACTORY-INSTALLED CR-P2 LITHIUM BATTERY, SENSOR "HANDS FREE" OPERATION AND MANUAL OVERRIDE BUTTON. EVERCLEAN SEAT EXTRA HEAVY DUTY OPEN FRONT LESS COVER.		AMERICAN STANDARD	8344.112.004 7721.038.002	SERVICE SINK FAUCET WITH PAIL HOOK, WALL BRACE, LEVER HANDLES, VACUUM BREAKER, INTEGRAL STOPS, MOP HANGERS & POLC GRID STRAINER F/3-1/2-SNK.
	AMERICAN STANDARD	6501.610 6590.001.020	WASHBROOK 1.0 GPF VITREOUS WHITE CHINA SIPHON JET URINAL WITH TOP SPUD AND EXTENDED BACK. ADA COMPLIANT-ELONGATED 14" RIM FROM FINISHED WALL. 3/4" INLET SPUD, STRAINER AND SELECTRONIC FLUSH VALVE. ADA COMPLIANT. MOUNT AT ADA HEIGHT.	FWC-1	ELKAY	LZSTL8SC ADA	VERSATILE COOLER WALL MOUNT BI-LEVEL ADA FILTERED, 8 GPH STAINLESS, FLEXI-GUARD SAFETY BUBBLER, ELECTRONIC FRONT AND SIDE BUBBLER PUSHBAR ACTIVATION, HERMETICALLY-SEALED COMPRESSOR AND FAN COOLED CONDENSER. ACCESSORIES MUST BE FURNISHED AND INSTALLED FOR ADA COMPLIANT.
	AMERICAN STANDARD	6063.101	SELECTRONIC FLUSH VALVE WITH FACTORY-INSTALLED CR-P2 LITHIUM BATTERY, SENSOR "HANDS FREE" OPERATION AND MANUAL OVERRIDE BUTTON.		ELKAY	MLP200	BI-LEVEL PLATE TYPE SYSTEM WALL CARRIER.
	ZURN	21221	PLATE TYPE SYSTEM WALL URINAL CARRIER.		McGUIRE	8912CBECO	1 1/2"x1 1/4" CHROME PLATED 17 GA. BRASS P-TRAP WITH CLEANOUT AND WALL ESCUTCHEON.
	AMERICAN STANDARD	6501.610 6590.001.020	WASHBROOK 1.0 GPF VITREOUS WHITE CHINA SIPHON JET URINAL WITH TOP SPUD AND EXTENDED BACK. ADA COMPLIANT-ELONGATED 14" RIM FROM FINISHED WALL. 3/4" INLET SPUD, STRAINER AND SELECTRONIC FLUSH VALVE. STANDARD HEIGHT.		McGUIRE	2165CC	1/2"x3/8" ANGLE HOT COLD WATER SUPPLY WITH STOPS.
	AMERICAN STANDARD	6063.101	SELECTRONIC FLUSH VALVE WITH FACTORY-INSTALLED CR-P2 LITHIUM BATTERY, SENSOR "HANDS FREE" OPERATION AND MANUAL OVERRIDE BUTTON.	SA-1	ZURN	Z1700-100/200	ZURN TYPE "B" PDI 3/4" MIPSS SHOCKSTOP 12-32 FIXTURE UNITS. PROVIDE SS 12"x12" ACCESS FOR SERVICING.
	ZURN	21221	PLATE TYPE SYSTEM WALL URINAL CARRIER.	FD-1	SIoux CHIEF	842LNR-V/842PT TG-331P	PVC BODY AND CAST IRON FLASHING COLLAR WITH ROUND NICKEL BRONZE ADJUSTABLE STRAINER HEAD, GASKET SEAL OUTLET AND PRO-SET/ROLL/TRAP SILL WATERLESS TRAP PRIMER.
	AMERICAN STANDARD	0356.421.020	LUCERNE WHITE VITREOUS WALL-HUNG LAVATORY WITH SINGLE CENTER FAUCET HOLE. ADA COMPLIANT. WALL HANGER INCLUDED/CONCEALED ARMS SUPPORT.	FCQ	SIoux CHIEF	852-4-LB-R	HARD FINISHED FLOOR. PVC BODY, ROUND ADJUSTABLE NICKEL BRONZE SCORLATED TOP, PVC CLOSURE PLUG.
	AMERICAN STANDARD	6053.102	ELECTRONIC PROXIMITY LAVATORY FAUCET, 1.5 GPM PRESSURE COMPENSATING, VANDAL-RESISTANT AERATOR AND SENSOR "HANDS FREE" OPERATION AND PWRX LONG-LIFE BATTERY POWERED.	DFCO	SIoux CHIEF	852-4-LB-R	HARD FINISHED FLOOR. PVC BODY, ROUND ADJUSTABLE NICKEL BRONZE SCORLATED TOP, PVC CLOSURE PLUG.
	AMERICAN STANDARD	605XTMV1070	POINT OF USE THERMOSTATIC MIXING VALVE.	GCO	SIoux CHIEF	852-4LI	ADJUSTABLE ON-GRADE CLEANOUT. PVC BODY AND CLOSURE PLUG WITH ROUND HEAVY DUTY CAST IRON RING AND COVER 4" MIPSS TRACTOR TYPE TOP.
	McGUIRE	155WCECO	ADA COMPLIANT OFFSET CHROME PLATED CAST BRASS TAILPIECE WITH OPEN GRID STRAINER.	WCO-1	SIoux CHIEF	873	FINISHED WALLS. CAST BRASS PLUG, STAINLESS STEEL BOLT, 5 1/2" ROUND STAINLESS STEEL ACCESS/CLEANOUT COVER WITH COUNTERSUNK SQUARE HEAD.
	McGUIRE	2165CC	1/2"x3/8" ANGLE HOT AND COLD WATER SUPPLY STOPS.				
	McGUIRE	8872CBECO	1 1/4" 17 GA. CHROME PLATED CAST BRASS P-TRAP WITH CLEANOUT AND OUTLET TO WALL WITH ESCUTCHEON.	HB-1	WOODFORD	865P4	3/4" FPT CLOSE COUPLED AUTOMATIC DRAINING, FREEZELESS RECESSED BRASS WALL HYDRANT WITH CHROME FINISH, VACUUM BREAKER, LOCKING ACCESS DOOR AND LOOSE TEE KEY.
	TRUEBRO	102EZ	ONE P-TRAP COVER TWO ANGLE VALVE AND SUPPLY COVER.				
	TRUEBRO	105EZ	ONE OFFSET TAILPIECE WHEELCHAIR STRAINER COVER ONLY.	BP-1	GRUNDFOS	UP26-64F	BUILT-IN MOTOR PROTECTION, SS CONSTRUCTION, WHISPER-QUIET OPERATION, 3 SPEED MOTOR, ED UNIT, REMOVABLE, INTEGRATED CHECK VALVE AND 3/4" SUPPLY PIPE, SUPPLY PIPE.
	AMERICAN STANDARD	0476.047.020	AQUALYN COUNTERTOP WHITE VITREOUS CHINA LAVATORY WITH CENTER FAUCET HOLE. ADA COMPLIANT.				
	AMERICAN STANDARD	6053.102	ELECTRONIC PROXIMITY LAVATORY FAUCET, 1.5 GPM PRESSURE COMPENSATING, VANDAL-RESISTANT AERATOR AND SENSOR "HANDS FREE" OPERATION AND PWRX LONG-LIFE BATTERY POWERED.				
	AMERICAN STANDARD	605XTMV1070	POINT OF USE THERMOSTATIC MIXING VALVE.				
	McGUIRE	155WCECO	ADA COMPLIANT CAST BRASS CHROME PLATED OFFSET WHEELCHAIR GRID STRAINER WITH 17 GAUGE 1 1/4" SEAMLESS BRASS OFFSET TAILPIECE ELBOW AND WASHER.				
	McGUIRE	2165CC	1/2"x3/8" ANGLE HOT AND COLD WATER SUPPLY WITH STOPS.				
	McGUIRE	8872C	1 1/4" CHROME PLATED CAST BRASS P-TRAP WITH CLEANOUT AND OUTLET TO WALL WITH ESCUTCHEON.				
	TRUEBRO	102WH	ONE P-TRAP COVER TWO ANGLE VALVE AND SUPPLY COVER.				
	TRUEBRO	105WH	ONE OFFSET TAILPIECE WHEELCHAIR STRAINER COVER ONLY.				

NOTES:
 1.) PROVIDE OTHER NECESSARY ACCESSORIES THAT ARE NOT MENTIONED IN THIS SCHEDULE AS REQUIRED. CONFIRM AND COORDINATE EXACT LOCATION AND MOUNTING HEIGHT WITH ARCHITECTURAL DRAWINGS. SUBMIT PRIOR TO PURCHASE.

ELECTRIC WATER HEATER													
MARK	RECOVERY		INPUT KW	FLC AMPS	MOCP	VOLTAGE /PHASE	DIMENSIONS	THERMOSTAT	WATER CONNECTIONS SIZE (NPT)		MANUFACTURER MODEL NO.	LOCATION	REMARKS
	TANK GALLONS	GPH @ 100' RISE							CW	HW			
EW-1	40	74	18	50	70	208/3/60	21"x x53-3/4"H	IMMERSION	1"	1"	RHEEM E40A-18-G	WH. 113	W/ (1)
EW-2	20	25	6	17	25	208/3/60	19"x x36-1/2"H	IMMERSION	3/4"	3/4"	RHEEM E20A-6-G	WH. 205	W/ (1)

1) ELECTRIC WATER HEATER WITH:
 A.) 150 PSIG ASME T & P RELIEF VALVE.
 B.) 98% MAXIMUM RECOVERY EFFICIENCY.
 C.) LIFE GUARD HEATING ELEMENTS, SYSTEM SENTINEL LED DIAGNOSTIC SYSTEM AND AUTOMATIC TEMP. CONTROL.
 D.) FULL PORT, FULL FLOW BRASS DRAIN VALVE.
 E.) LONG LIFE ASME TANK, MINIMAL HEAT LOSS DESIGN AND 2 1/2" RIGID POLYURETHANE FOAM INSULATION.
 F.) ANODE RODS.
 G.) INTEGRAL 120 VOLT CONTROL CIRCUIT AND FUSING.
 H.) WITH "WATTS" THERMAL EXPANSION TANK (PET-12-M1).




MEPTech Engineering, Inc.
 TBPE FIRM # F-10227
 5090 ADA AVENUE
 BEAUMONT, TEXAS 77708-4411
 PHONE: (409) 673-2013
 FAX: (409) 767-9224