



Addendum No. 1

Project: **United Christian Academy**

—

Date: **8-26-2021**

All bidders are herewith notified of the following additions, deletions, changes or clarifications to the drawings dated 8-2-2021 and shall be acknowledged as received on the proposal.

Corrections/Clarifications:

1. A401 & A402 – Exterior Elevations
Showed exterior wall mounted fixtures and adjusted mechanical exterior louvers per MEP drawings.
2. Reference attached M.1, M.2, M.4, E.1, E.7 and P.1 for revisions.

End of Addendum



Date: 8-26-2021



MEPTech
Engineering, Inc.
TBPE FIRM # F-10227
5090 ADA AVENUE
BEAUMONT, TEXAS 77708-4411
PHONE: (409) 873-2013
FAX: (409) 767-9224

Addendum No. 1

Project: **United Christian Academy**

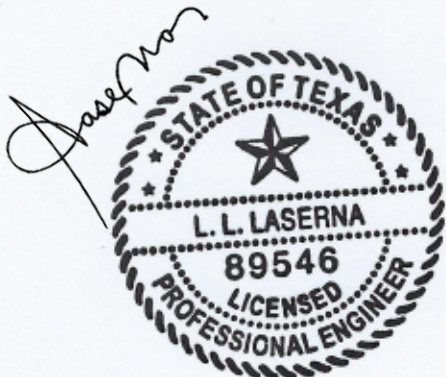
Date: 8/26/2021

All Bidders are herewith notified of the following additions, deletions, changes or clarifications to the drawings dated 8/2/2021 and shall be acknowledged as received on the proposal.

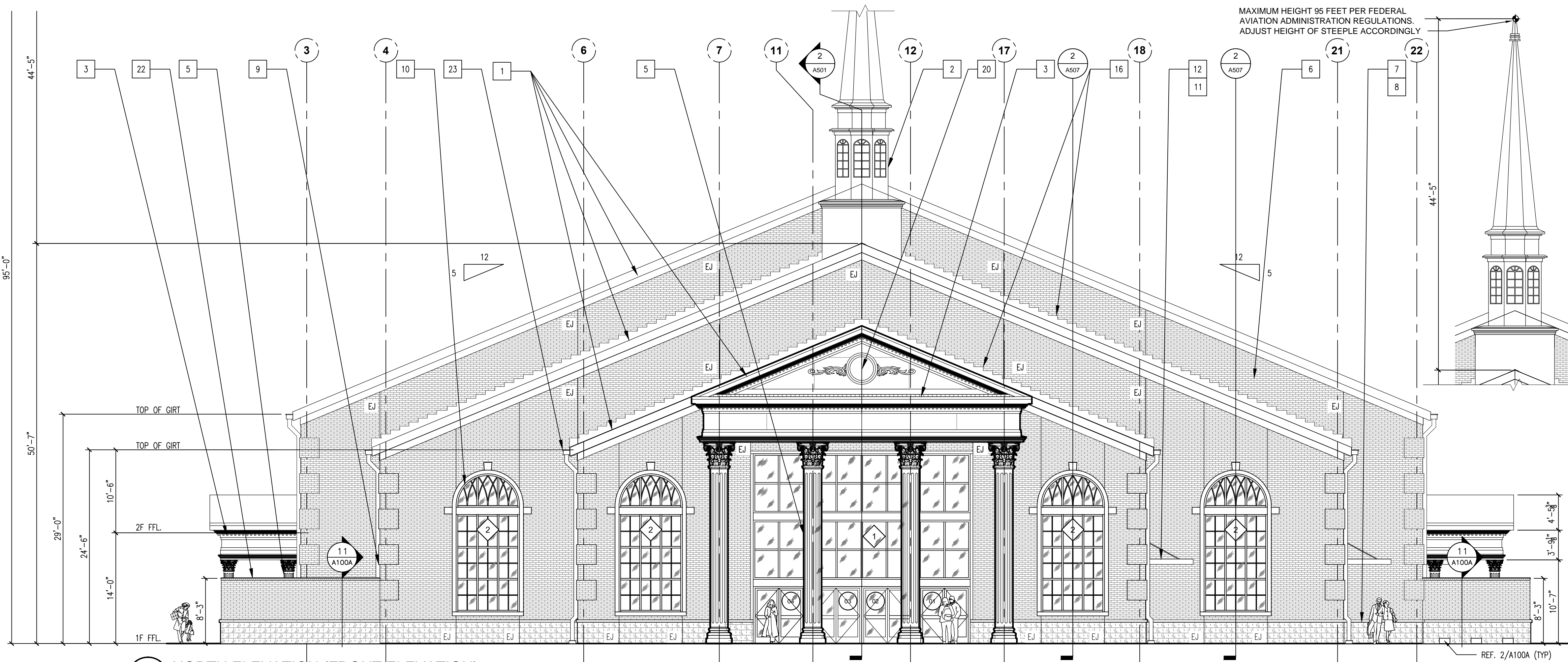
MEP construction documents Corrections and/or Clarifications:

- 1.) Mechanical drawing Sheet M.1, M.2 & M.4:
 - a.) Replace sheet with attached M.1, M.2 & M.4 with revision #1.
- 2.) Electrical drawing Sheet E.1 & E.7:
 - a.) Replace sheet with attached E.1 & E.7 with revision #1.
- 3.) Plumbing drawing Sheet P.1:
 - a.) Replace sheet with attached P.1 with revision #1.

End of Addendum #1

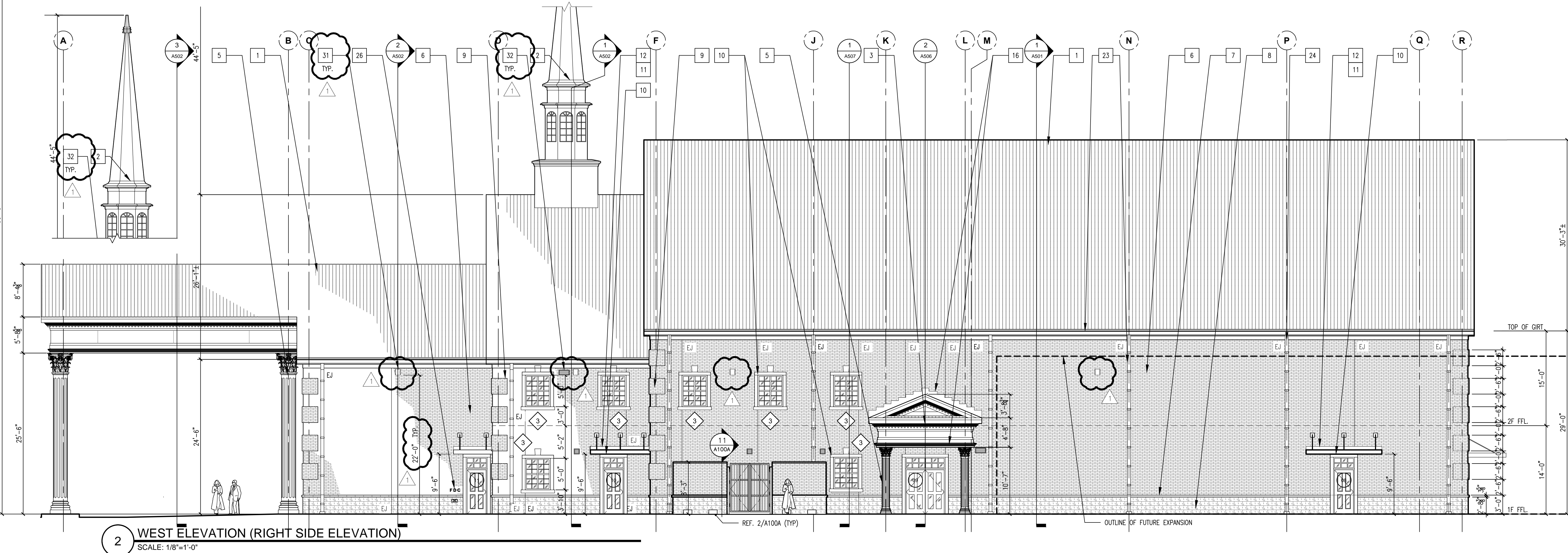


8/26/2021



KEYNOTES

1. KYNAR FINISH STANDING SEAM METAL ROOF-TDI WINDSTORM RATED
2. FIBERGLASS STEEPLE UNIT 11 BY FIBERGLASS SPECIALTIES INC. GC TO COORDINATE HEIGHT-COMPLY WITH AIRPORT HEIGHT RESTRICTION
3. POLYURETHANE COMPONENT MOULDINGS AT PEDIMENT AND ENTABLATURE - FYPON OR APPROVED EQUAL
4. HARDIE TEXTURED PANELS WITH SMOOTH SAND FINISH AND V-GROOVE SHIPLAP JOINTS
5. GFRC CLAD CORINTHIAN COLUMN - STORMBERG OR APPROVED EQUAL
6. KING SIZE FIELD BRICK - REF. SPECS.
7. CAST STONE WATER TABLE - REF. SPECS.
8. BURNISHED CMU BLOCKS - REF. SPECS.
9. KING SIZE BRICK QUORN, TYP AT EXTERIOR CORNERS - REF. SPECS.
10. CAST STONE WRAP-AROUND AT OPENINGS, KEYSTONE, LINTEL, SILLS, - REF. SPECS.
11. KYNAR FINISH FLASHING AND THRU-WALL COUNTER FLASHING, TYP. APPLY SEALANT.
12. PRE-ENGINEERED WALL HUNG METAL CANOPY WITH BRACKETS ENGINEERED FOR WINDSTORM RATING SPECIFIED AT STRUCT. DRAWINGS - KYNAR FINISH BY PRE-ENG. METAL BLDG. MANUFACTURER
13. 1-HR ROOF/CEILING ASSEMBLY - UL #P516
14. 1-HR FLOOR/CEILING CONSTRUCTION - UL #G256
15. TEMPORARY WOOD STAIR FOR SECOND FLOOR ACCESS (BEYOND)
16. KYNAR FINISH STEP FLASHING AND THRU-WALL STEP COUNTER FLASHING, TYP.
17. 1-HR PROTECTION OF PRIMARY STRUCTURAL FRAME
18. LINER SYSTEM WITH 1X3 THERMAL SPACER BLOCKS. TOP LAYER R19 FIBERGLASS INSULATION DRAPED OVER TSB LINED STEEL PURLINS. BOTTOM LAYER R-11 FIBERGLASS INSULATION INSTALLED IN BETWEEN PURLINS OVER BLACK VINYL SHEET MEMBRANE AND HELD IN PLACE BY PAINTED BLACK GALV. STEEL BANDS ANCHORED TO STEEL PURLINS.
19. UNDERSIDE OF LINER SYSTEM (BLACK POLYETHYLENE VAPOR RETARDER LINER FABRIC) AND GALV. METAL SUPPORT STEEL BANDS, PAINTED BLACK.
20. POLYURETHANE EXTERIOR ORNAMENT INLAY AND CHURCH LOGO
21. METAL STUD BRACING AS REQUIRED, REF. STRUCTURAL
22. 8'-0" HIGH MECHANICAL YARD ENCLOSURE WITH 3'-0" WIDE, PAIR GATES AND 8" HIGH X 16" WIDE MASONRY AIR OPENING INLET AS SHOWN. REF SITE DETAILS AT A100A
23. KYNAR FINISH GUTTER WITH HANGERS @ 16" O.C. AND DOWNSPOUT WITH STRAPS @ 3'-0" O.C.
24. EXPANSION JOINT (E.J.) AS SHOWN. AT EAST AND WEST ELEVATION, LOCATION IS BEHIND DOWNSPOUTS.
25. FIRE DEPARTMENT CONNECTION (FDC) SIGN: GEMINI BOLD 6" HIGH CAST ALUMINUM LETTERS, COLOR: RED 2793, PROJECTED SPACER MOUNT
26. KYNAR FINISH "R" METAL PANELS
27. PROVIDE CONTROL JOINTS IN DRYWALL WHERE PARTITION TRAVERSES A CONSTRUCTION JOINT
28. PROVIDE CONTROL JOINT IN UNINTERRUPTED STRAIGHT PLANE DRYWALL SPACE AT 30'-0" LINEAR MAX
29. PROVIDE CONTROL JOINT IN CMU PARTITIONS SPACED 36'-0" MAX APART FOR INTERIOR PARTITIONS AND 30'-0" MAX APART FOR EXTERIOR PARTITIONS
30. PROVIDE EXPANSION JOINTS IN BRICK AS FOLLOWS:
30.1. WINDOWS AND DOORS LESS THAN 6 FEET WIDE - ONE SIDE OF OPENING
30.2. WINDOWS AND DOORS MORE THAN 6 FEET WIDE - BOTH SIDES OF OPENING
30.3. WALLS LESS THAN 6 FEET HIGH - BOTH SIDES OF OPENING
31. EXTERIOR LIGHT FIXTURE(S), REF. MEP DRAWINGS
32. KYNAR FINISH LOUVER(S) - TDI WINDSTORM RATED, FOR REF. MEP DRAWINGS



UNITED CHRISTIAN ACADEMY

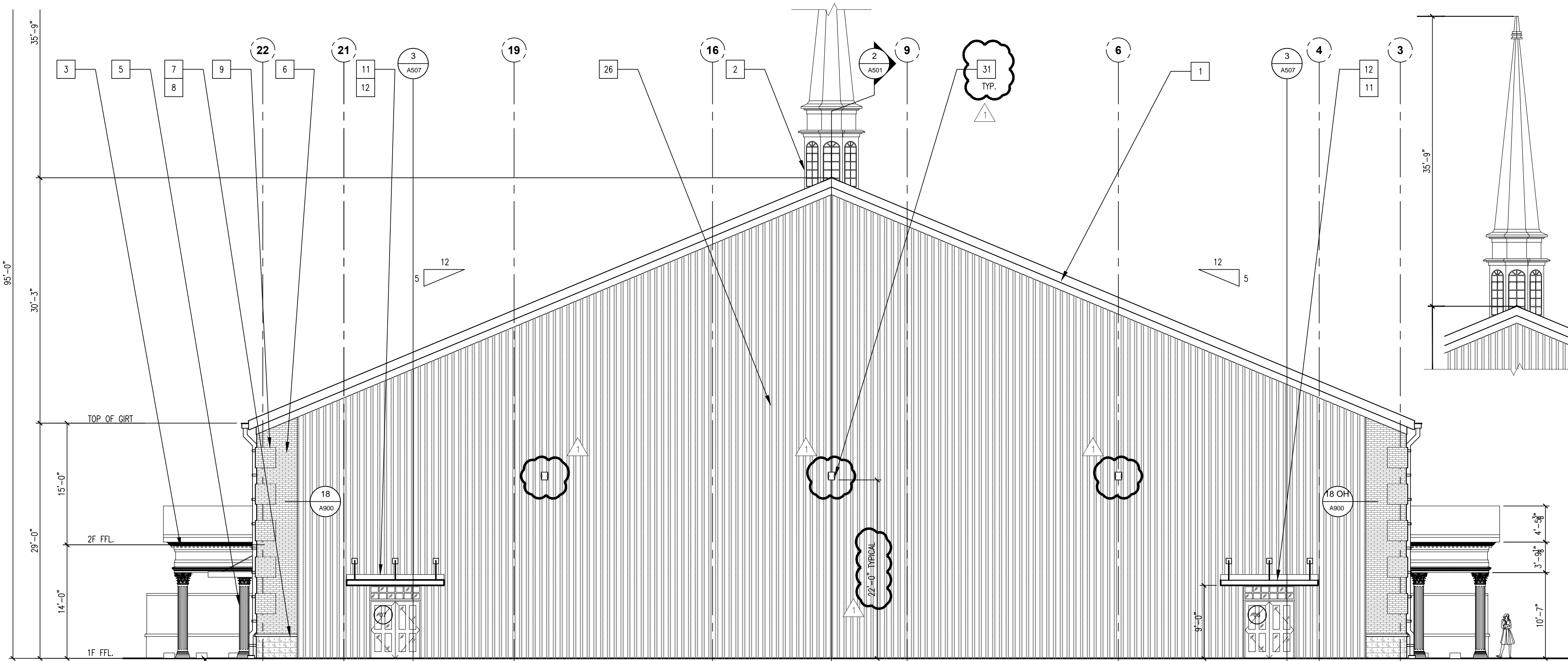
First Pentecostal Church

10619 Highway 69

ISSUED FOR SCHEMATIC DESIGN	<input checked="" type="checkbox"/>
DATE: 10/6/2020	
DESIGN DEVELOPMENT	<input checked="" type="checkbox"/>
DATE: 3/5/2021	
BIDS & CONSTRUCTION	<input checked="" type="checkbox"/>
DATE: 8/2/2021	
REVISION: 1	
DATE: 8-26-2021	
REVISION:	
DATE:	
REVISION:	
DATE:	

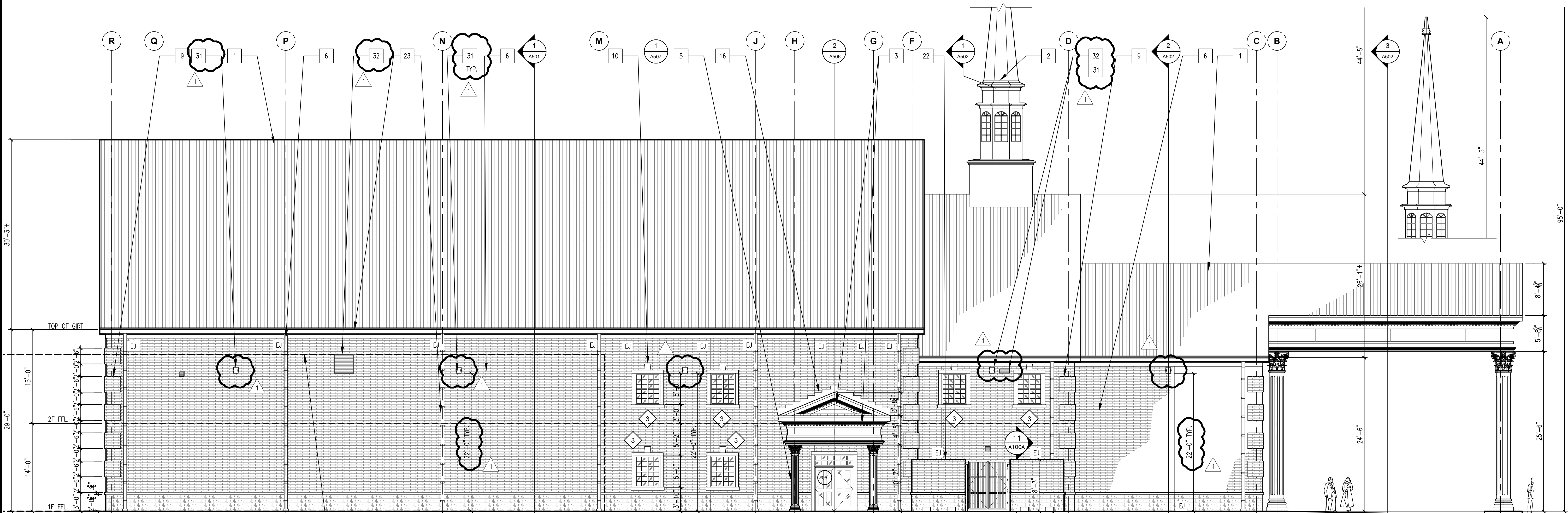
DRAWINGS SHEET TITLE
EXTERIOR ELEVATIONS

SHEET NUMBER
A401
20105
PROJECT NUMBER

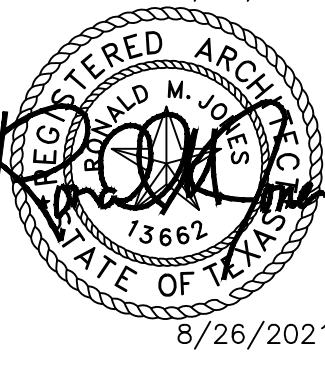


1 SOUTH ELEVATION (BACK ELEVATION)
SCALE: 1/8"=1'-0"

- ### KEYNOTES
1. KYNAR FINISH STANDING SEAM METAL ROOF-TDI WINDSTORM RATED
 2. FIBERGLASS STEEPLE UNIT 11 BY FIBERGLASS SPECIALTIES INC. GC TO COORDINATE HEIGHT-COMPLY WITH AIRPORT HEIGHT RESTRICTION
 3. POLYURETHANE COMPONENT MOULDINGS AT PEDIMENT AND ENTABLATURE - FYPON OR APPROVED EQUAL
 4. HARDIE TEXTURED PANELS WITH SMOOTH SAND FINISH AND V-GROOVE SHIPLAP JOINTS
 5. GFRG CLAD CORINTHIAN COLUMN - STORMBERG OR APPROVED EQUAL
 6. KING SIZE FIELD BRICK - REF. SPECS.
 7. CAST STONE WATER TABLE - REF. SPECS.
 8. BURNISHED CMU BLOCKS - REF. SPECS.
 9. KING SIZE BRICK QUOIN, TYP AT EXTERIOR CORNERS - REF. SPECS.
 10. CAST STONE WRAP-AROUND AT OPENINGS, KEystone, LINTEL, SILL, - REF. SPECS.
 11. KYNAR FINISH FLASHING AND THRU-WALL COUNTER FLASHING, TYP. APPLY SEALANT.
 12. PRE-ENGINEERED WALL HUNG METAL CANOPY WITH BRACKETS ENGINEERED FOR WINDSTORM RATING SPECIFIED AT STRUCT. DRAWINGS - KYNAR FINISH BY PRE-ENG. METAL BLDG. MANUFACTURER
 13. 1-HR ROOF/CEILING ASSEMBLY - UL #P516
 14. 1-HR FLOOR/CEILING CONSTRUCTION - UL #G256
 15. TEMPORARY WOOD STAIR FOR SECOND FLOOR ACCESS (BEYOND)
 16. KYNAR FINISH STEP FLASHING AND THRU-WALL STEP COUNTER FLASHING, TYP.
 17. 1-HR PROTECTION OF PRIMARY STRUCTURAL FRAME
 18. LINER SYSTEM WITH 1X3 THERMAL SPACER BLOCKS. TOP LAYER R19 FIBERGLASS INSULATION DRAPED OVER TSB LINED STEEL PURLINS. BOTTOM LAYER R-11 FIBERGLASS INSULATION INSTALLED IN BETWEEN PURLINS OVER BLACK VINYL SHEET MEMBRANE AND HELD IN PLACE BY PAINTED BLACK GALV. STEEL BANDS ANCHORED TO STEEL PURLINS.
 19. UNDERSIDE OF LINER SYSTEM (BLACK POLYETHYLENE VAPOR RETARDER LINER FABRIC) AND GALV. METAL SUPPORT STEEL BANDS, PAINTED BLACK.
 20. POLYURETHANE EXTERIOR ORNAMENT INLAY AND CHURCH LOGO
 21. METAL STUD BRACING AS REQUIRED, REF. STRUCTURAL
 22. 8'-0" HIGH MECHANICAL YARD ENCLOSURE WITH 3'-0" WIDE, PAIR GATES AND 8" HIGH X 16" WIDE MASONRY AIR OPENING INLET AS SHOWN. REF SITE DETAILS AT A100A
 23. KYNAR FINISH GUTTER WITH HANGERS @ 16" O.C. AND DOWNSPOUT WITH STRAPS @ 3'-0" O.C.
 24. EXPANSION JOINT (E.J.) AS SHOWN. AT EAST AND WEST ELEVATION, LOCATION IS BEHIND DOWNSPOUTS.
 25. FIRE DEPARTMENT CONNECTION (FDC) SIGN: GEMINI BOLD 6" HIGH CAST ALUMINUM LETTERS, COLOR: RED 2793, PROJECTED SPACER MOUNT
 26. KYNAR FINISH "R" METAL PANELS
 27. PROVIDE CONTROL JOINTS IN DRYWALL WHERE PARTITION TRAVERSES A CONSTRUCTION JOINT
 28. PROVIDE CONTROL JOINT IN UNINTERRUPTED STRAIGHT PLANE DRYWALL SPACE AT 30'-0" LINEAR MAX
 29. PROVIDE CONTROL JOINT IN CMU PARTITIONS SPACED 36'-0" MAX APART FOR INTERIOR PARTITIONS AND 30'-0" MAX APART FOR EXTERIOR PARTITIONS
 30. PROVIDE EXPANSION JOINTS IN BRICK AS FOLLOWS:
30.1. WINDOWS AND DOORS LESS THAN 6 FEET WIDE - ONE SIDE OF OPENING
30.2. WINDOWS AND DOORS MORE THAN 6 FEET WIDE - BOTH SIDES OF OPENING
 31. EXTERIOR LIGHT FIXTURE(S), REF. MEP DRAWINGS
 32. KYNAR FINISH LOUVER(S) - TDI WINDSTORM RATED, FOR REF. MEP DRAWINGS



2 EAST ELEVATION (LEFT SIDE ELEVATION)
SCALE: 1/8"=1'-0"



UNITED CHRISTIAN ACADEMY

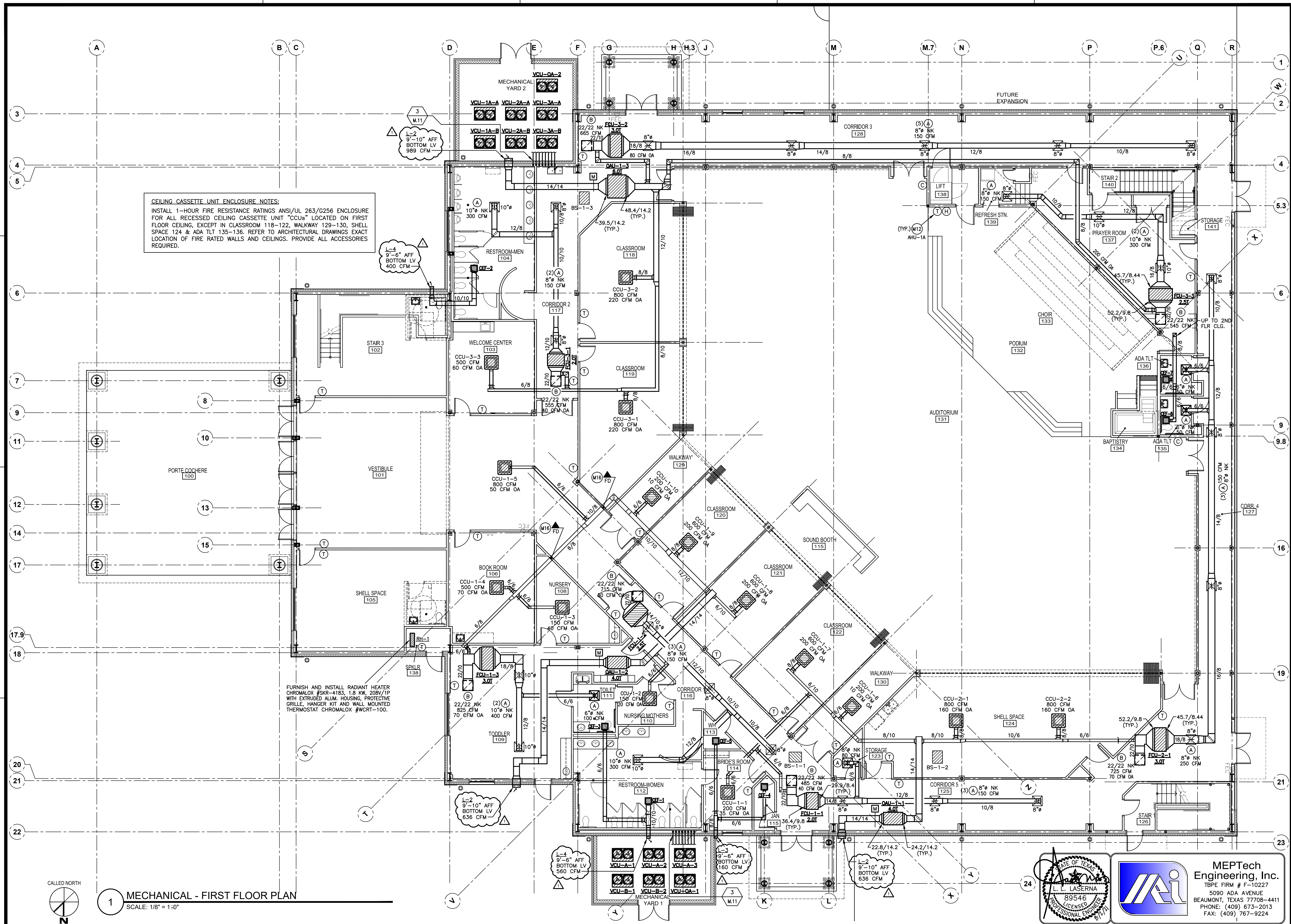
First Pentecostal Church

10619 Highway 69

ISSUED FOR SCHEMATIC DESIGN	<input checked="" type="checkbox"/>
DATE: 10/6/2020	
DESIGN DEVELOPMENT	<input checked="" type="checkbox"/>
DATE: 3/5/2021	
BIDS & CONSTRUCTION	<input checked="" type="checkbox"/>
DATE: 8/2/2021	
REVISION:	
DATE: 8-26-2021	
REVISION:	
DATE:	
REVISION:	
DATE:	

DRAWINGS SHEET TITLE
EXTERIOR ELEVATIONS

SHEET NUMBER
A402
20105
PROJECT NUMBER



CEILING CASSETTE UNIT ENCLOSURE NOTES:
INSTALL 1-HOUR FIRE RESISTANCE RATINGS ANSI/UL 263/G256 ENCLOSURE FOR ALL RECESSED CEILING CASSETTE UNIT "CCUs" LOCATED ON FIRST FLOOR CEILING, EXCEPT IN CLASSROOM 118-122, WALKWAY 129-130, SHELL SPACE 124 & ADA TLT 135-136. REFER TO ARCHITECTURAL DRAWINGS EXACT LOCATION OF FIRE RATED WALLS AND CEILINGS. PROVIDE ALL ACCESSORIES REQUIRED.

FURNISH AND INSTALL RADIANT HEATER CHROMALOX #SKR-4183, 1.8 KW, 208V/1P WITH EXTRUDED ALUM. HOUSING, PROTECTIVE GRILLE, HANGER KIT AND WALL MOUNTED THERMOSTAT CHROMALOX #WCR-100.

MECHANICAL - FIRST FLOOR PLAN
SCALE: 1/8" = 1'-0"



3501 Fwy 281, Suite 720
Beaumont, Texas 77701
TEL: (409) 666-1146
FAX: (409) 666-1145
J. ROB CLARK, AIA
RONALD M. JONES, AIA
www.archalliance.com

ARCHITECT HAS REVIEWED THE CONSULTANT'S WORK AND COORDINATED IT WITH THE OVERALL PROJECT

United Christian Academy
First Pentecostal Church
Highway 69
Nederland, TX 77627

ISSUED FOR SCHEMATIC DESIGN ☒
DATE: _____
DESIGN DEVELOPMENT ☒
DATE: _____
BIDS & CONSTRUCTION ☒
DATE: 8/02/2021
REVISION: 
DATE: 8/26/2021
REVISION: _____
DATE: _____
REVISION: _____
DATE: _____

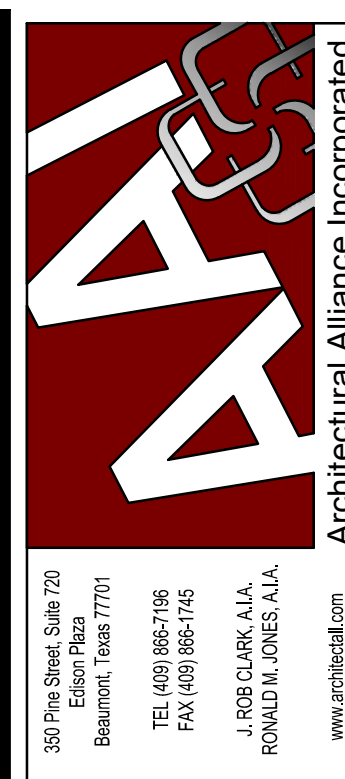
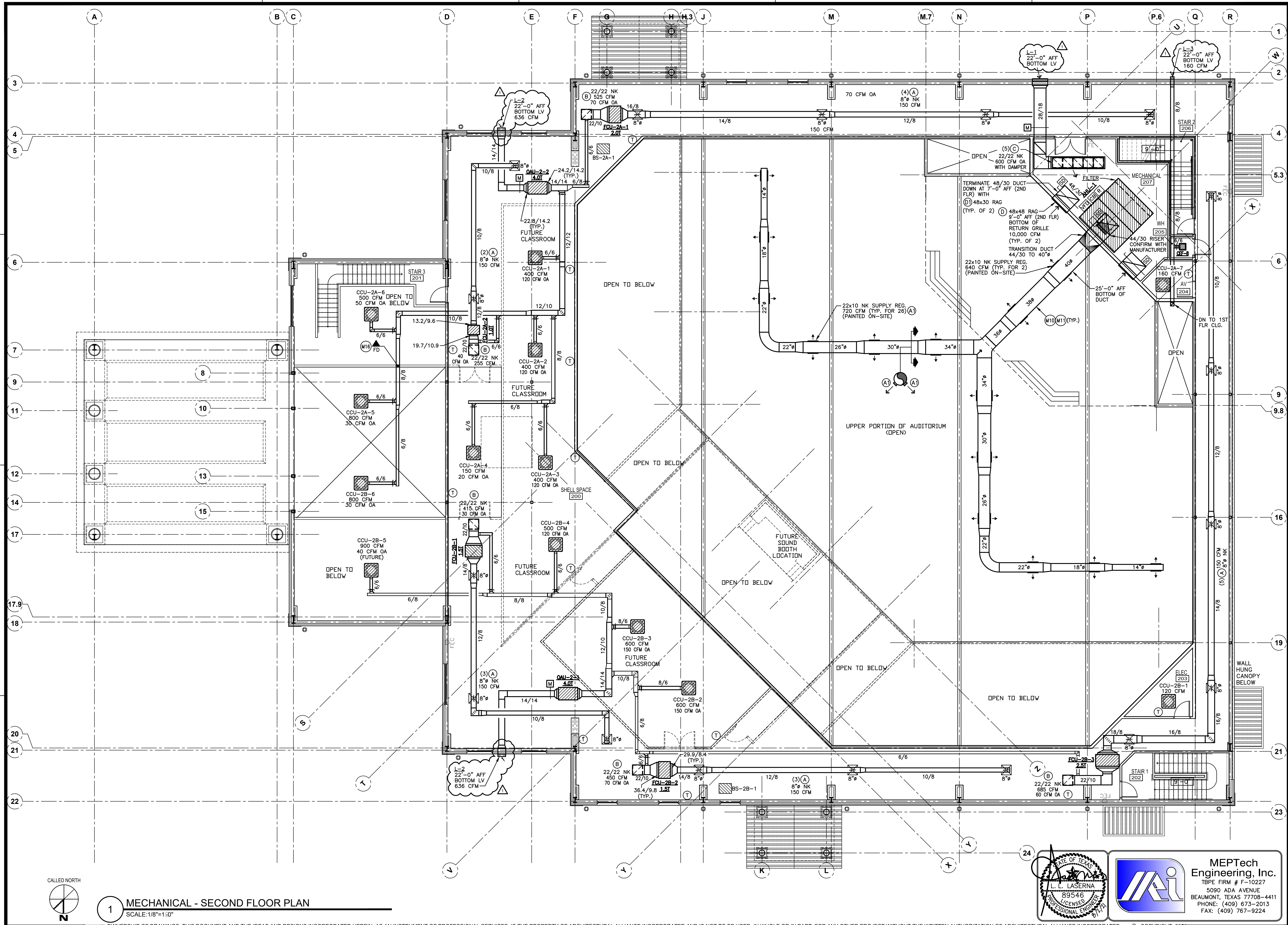
DRAWINGS SHEET TITLE
MECHANICAL FIRST FLOOR PLAN

SHEET NUMBER
M.1

20105
PROJECT NUMBER



MEPTech Engineering, Inc.
TBPE FIRM # F-10227
5090 ADA AVENUE
BEAUMONT, TEXAS 77708-4411
PHONE: (409) 673-2013
FAX: (409) 767-9224



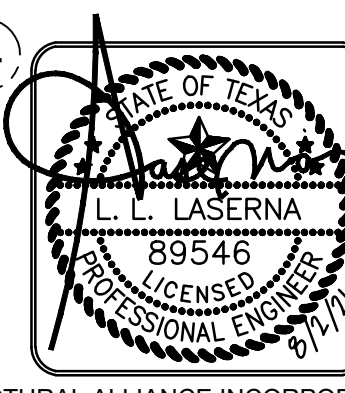
ARCHITECT HAS REVIEWED THE CONSULTANT'S WORK AND COORDINATED IT WITH THE OVERALL PROJECT

UNITED CHRISTIAN ACADEMY
First Pentecostal Church
Highway 69
Nederland, TX 77627

ISSUED FOR SCHEMATIC DESIGN ☒
DATE: _____
DESIGN DEVELOPMENT ☒
DATE: _____
BIDS & CONSTRUCTION ☒
DATE: 8/02/2021
REVISION: ☒
DATE: 8/26/2021
REVISION: _____
DATE: _____
REVISION: _____
DATE: _____

DRAWINGS SHEET TITLE
MECHANICAL
SECOND FLOOR
PLAN

SHEET NUMBER
M.2
20105
PROJECT NUMBER



MEPTech
Engineering, Inc.
TBE FIRM # F-10227
5090 ADA AVENUE
BEAUMONT, TEXAS 77708-4411
PHONE: (409) 673-2013
FAX: (409) 767-9224

1 MECHANICAL - SECOND FLOOR PLAN
SCALE: 1/8"=1'-0"

OWNERSHIP OF DRAWINGS THIS DOCUMENT AND THE IDEAS AND DESIGNS INCORPORATED HEREIN, AS AN INSTRUMENT OF PROFESSIONAL SERVICES, IS THE PROPERTY OF ARCHITECTURAL ALLIANCE INCORPORATED AND IS NOT TO BE USED, IN WHOLE OR IN PART, FOR ANY OTHER PROJECT WITHOUT THE WRITTEN AUTHORIZATION OF ARCHITECTURAL ALLIANCE INCORPORATED.

© COPYRIGHT 2021

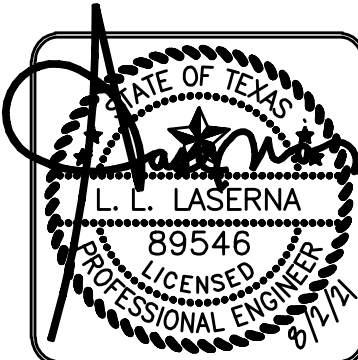
EXHAUST FAN SCHEDULE										
MARK	CFM	STATIC PRESSURE "H ₂ O"	DRIVE	FAN RPM	MOTOR		ELECTRICAL SUPPLY			REMARKS
					AMPS	WATTS	VOLT	Ø	Hz	
CEF-1,2	400	0.125	DIRECT	1000	1.74	121	115	1	60	GREENNECK SP-A410
CEF-3	160	0.25	DIRECT	1400	1.30	113	115	1	60	GREENNECK SP-A190
CEF-4,5,6,7,8	80	0.125	DIRECT	900	0.34	29.4	115	1	60	GREENNECK SP-A90
NOTES:										
1. PROVIDE BACKDROP DAMPER FOR EACH FAN.										
2. PROVIDE SAFETY DISCONNECT SWITCH FOR EACH FAN.										
3. PROVIDE ALUMINUM GRILLE IN WHITE ENAMEL FINISH.										
4. CEF-1 TO 8, SWITCH WITH OCCUPANCY SENSOR.										

LOUVER SCHEDULE										
MARK	LOCATION	ELEVATION (FROM BOTTOM) NOTE (2)	CFM	MAX. S.P. (IN W.G.)	DIMENSION (IN.)	FRAME STYLE	MANUFACTURER	MODEL	DUTY	REMARKS
L-1	EXTERIOR	PLANS	2,500	0.10	36"Wx36"Hx6"D	FLANGE	GREENHECK	EHH-601D	INTAKE (OA)	NOTE 1, 2 & 3
L-2	EXTERIOR	PLANS	PLANS	0.10	18"Wx18"Hx6"D	FLANGE	GREENHECK	EHH-601D	INTAKE (OA)	NOTE 1, 2 & 3
L-3	EXTERIOR	PLANS	PLANS	0.10	12"Wx12"Hx6"D	FLANGE	GREENHECK	EHH-601D	EXHAUST (EA)	NOTE 1, 2 & 3
L-4	EXTERIOR	PLANS	PLANS	0.10	18"Wx18"Hx6"D	FLANGE	GREENHECK	EHH-601D	EXHAUST (EA)	NOTE 1, 2 & 3
NOTES: 1) EXTRUDED ALUMINUM CONSTRUCTION WITH: A) HORIZONTAL, WEATHERPROOF STATIONARY BLADES & HURRICANE RATED AT 150 PSF. B) EXPANDED ALUMINUM BIRDSCREEN IN REMOVABLE FRAME & REAR INSIDE MOUNT. C) LOUVER/BIRDSCREEN FINISH SHALL BE KYNAR 500. COLOR SELECTION BY ARCHITECT. SUBMIT COLOR CHART TO ARCHITECT. D) ALL FASTENERS UTILIZED IN CONSTRUCTION/INSTALLATION SHALL BE STAINLESS STEEL OR ALUMINUM 2) COORDINATE EXACT LOUVER LOCATION/ELEVATION WITH ARCHITECT PRIOR TO MAKE FINAL INSTALLATION. 3) APPROVED MANUFACTURER: DOWCO										



AIR DISTRIBUTION DEVICE SCHEDULE							
MARK	FUNCTION	MAKE AND MODEL NO.	FACE SIZE (INCH)	OPENING SIZE (INCH)	MOUNTING STYLE BORDER	MATERIAL OF CONSTRUCTION	REMARKS
(A)	SUPPLY AIR DIFFUSER	TITUS TMS-FR	24x24	22x22	LAY-IN	ALUMINUM	NOTES: 1, 2, 3, 4 & 5
(A1)	SUPPLY AIR REGISTER	TITUS 272	24x12	22x10	FLUSH	ALUMINUM	NOTES: 1, 3 & 6
(B)	RETURN AIR REGISTER	TITUS PAR-FR	24x24	22x22	LAY-IN	ALUMINUM	NOTES: 1, 3, 4 & 5
(C)	RETURN AIR REGISTER	TITUS TMS-FR	24x24	22x22	SURFACE	ALUMINUM	NOTES: 1, 2, 3, 4 & 5
(D)	WALL RETURN AIR GRILLE	TITUS 350 RL	48x48	46x46	FLUSH	ALUMINUM	NOTES: 1, 3, 4 & 7
(D1)	WALL RETURN AIR GRILLE	TITUS 350 RL	48x30	46x28	FLUSH	ALUMINUM	NOTES: 1, 3, 4 & 7
NOTES: 1. REFER TO MECHANICAL FLOOR PLAN FOR NECK SIZES. 2. 4-WAY THROW UNLESS OTHERWISE NOTED. 3. WITH ALUMINUM VOLUME CONTROL DAMPER. 4. STANDARD FINISH #26 WHITE. 5. FUSIBLE LINK FIRE DAMPER. 6. DOUBLE DEFLECTION 3/4" BLADE SPACING. COLOR TO BE SELECTED BY ARCHITECT. 7. 3/4" BLADE SPACING.							

DAMPERS					
MARK	SYMBOL	SERVICE	BLADE ACTION	MFGR./MODEL	REMARKS
D-1		BALANCING	N/A	RUSKIN MD25	GALVANIZED CONSTRUCTION WITH MANUAL OPERATOR AND LOCKING QUADRANT. NOTE 1 AND 2
D-2		BALANCING	OPPOSED	RUSKIN CD35	GALVANIZED CONSTRUCTION WITH MANUAL OPERATOR AND LOCKING QUADRANT. NOTE 1
D-3		MOTORIZED OPEN/CLOSE/MODULATING	PARALLEL	RUSKIN CD60	LOW LEAKAGE DAMPER WITH GALVANIZED CONSTRUCTION, AIRFOIL SHAPED BLADES WITH VINYL EDGE SEALS, SHAFTS AND BLADES BOLTED THRU STAINLESS STEEL JAMB SEAL, BEARINGS, LINKAGE, OPERATOR AS SPECIFIED. NOTE 1
FD		FIRE DAMPER	N/A	RUSKIN IBD	U.L. LABLED, 1 1/2 HOUR RATED FIRE DAMPER. GALVANIZED STEEL CONSTRUCTION SUITABLE FOR VERTICAL MOUNTING - 165°F FUSIBLE LINK. DAMPER CONSTRUCTION AND INSTALLATION SHALL CONFORM TO U.L. 555. PROVIDE STYLE "B" OR STYLE "CR" AS REQUIRED BY DUCT CONSTRUCTION.
NOTES: ① PROVIDE DAMPER WITH RAISED OPERATOR TO ALLOW FOR CONTINUOUS EXTERNAL INSULATION (WHERE REQUIRED BY DUCT CONSTRUCTION). ② CONTRACTORS OPTION - PROVIDE SHOP FABRICATED DAMPER CONSTRUCTED PER SMACNA STANDARDS.					



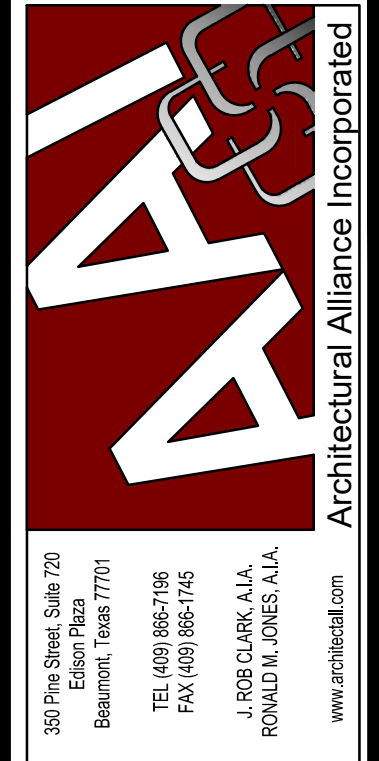
MEPTech Engineering, Inc.
TSPE FIRM # F-10227
5090 ADA AVENUE
BEAUMONT, TEXAS 77708-4411
PHONE: (409) 673-2013
FAX: (409) 767-9224

LIGHT FIXTURES ENCLOSURE NOTES:
INSTALL 1-HOUR FIRE RESISTANCE RATINGS ANSI/UL 263/G256 ENCLOSURE FOR ALL CEILING RECESSED LIGHT FIXTURES LOCATED ON FIRST FLOOR CEILING, EXCEPT IN CLASSROOM 118-122, WALKWAY 129-130, SHELL SPACE 124 & ADA TLT 135-136. REFER TO ARCHITECTURAL DRAWINGS EXACT LOCATION OF FIRE RATED WALLS AND CEILINGS. PROVIDE ALL ACCESSORIES REQUIRED.

1 LIGHTING - FIRST FLOOR PLAN
SCALE: 1/8" = 1'-0"

OWNERSHIP OF DRAWINGS THIS DOCUMENT AND THE IDEAS AND DESIGNS INCORPORATED HEREIN, AS AN INSTRUMENT OF PROFESSIONAL SERVICES, IS THE PROPERTY OF ARCHITECTURAL ALLIANCE INCORPORATED AND IS NOT TO BE USED, IN WHOLE OR IN PART, FOR ANY OTHER PROJECT WITHOUT THE WRITTEN AUTHORIZATION OF ARCHITECTURAL ALLIANCE INCORPORATED.

© COPYRIGHT 2021



ARCHITECT HAS REVIEWED THE CONSULTANT'S WORK AND COORDINATED IT WITH THE OVERALL PROJECT

UNITED CHRISTIAN ACADEMY

First Pentecostal Church

Highway 69

Nederland, TX 77627

ISSUED FOR SCHEMATIC DESIGN	<input type="checkbox"/>
DATE:	
DESIGN DEVELOPMENT	<input type="checkbox"/>
DATE:	
BIDS & CONSTRUCTION	<input type="checkbox"/>
DATE: 8/02/2021	
REVISION:	
DATE: 8/26/2021	
REVISION:	
DATE:	
REVISION:	
DATE:	

DRAWINGS SHEET TITLE
LIGHTING
FIRST FLOOR
PLAN

SHEET NUMBER
E.1
20105
PROJECT NUMBER

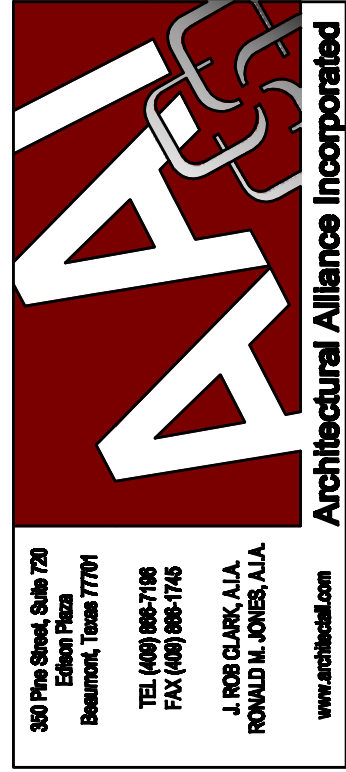
MEPTech Engineering, Inc.
TBPE FIRM # F-10227
5090 ADA AVENUE
BEAUMONT, TEXAS 77708-4411
PHONE: (409) 673-2013
FAX: (409) 767-9224

LIGHT FIXTURE SCHEDULE					
MARK	MANUFACTURER	MODEL NO.	LAMPS	VOLTAGE	REMARKS
A	METALUX	24C22-45-S-UNV- L840-CD1-U	(1)-35W LED/840 (INCLUDED)	120-277	2' x 4' RECESSED GRID LED WITH DIE-FORMED COLD ROLLED STEEL, INTEGRAL DRIVER AND SMOOTH FROSTED ACRYLIC LENS.
AE	METALUX	24C22-45-S-UNV-EL14W L840-CD1-U	(1)-35W LED/840 (INCLUDED)	120-277	SAME AS FIXTURE TYPE "A" EXCEPT WITH EMERGENCY BATTERY PACK INSTALLED.
A1E	METALUX	24FPX-47-UNV-EL14W L840-CD1	(1)-40W LED/840 (INCLUDED)	120-277	2' x 4' RECESSED GRID LED WITH DIE FORMED COLD ROLLED STEEL, INTEGRAL DRIVER EMERGENCY BATTERY AND SMOOTH FROSTED ACRYLIC LENS.
A2E	METALUX	22FPX-32-UNV-EL14W L840-CD1	(1)-31W LED/840 (INCLUDED)	120-277	2' x 2' RECESSED GRID LED WITH DIE FORMED COLD ROLLED STEEL, INTEGRAL DRIVER EMERGENCY BATTERY AND SMOOTH FROSTED ACRYLIC LENS.
B	METALUX	4V2T-LD5-6-DR-UNV -L840-CD1 -WL-SSL-U	(1)-51W LED/840 (INCLUDED)	120-277	4' SURFACE MOUNTED WITH FIBERGLASS HOUSING, PRISMATIC LENS, LED SYSTEM INTEGRAL DRIVER, POLYURETHANE GASKETING, STAINLESS STEEL LATCHES, EBP AND UL LISTED FOR WET LOCATIONS.
BE	METALUX	4V2T-LD5-6-DR-UNV EL10W-L840-CD1 -WL-SSL-U	(1)-51W LED/840 (INCLUDED)	120-277	SAME AS FIXTURE TYPE "B" EXCEPT WITH SELF-CONTAINED EMERGENCY BATTERY OPERATES 10 WATT.
B1E	METALUX	4V2T-LD5-4-DR-UNV EL10W-L840-CD1 -WL-SSL-U	(1)-30W LED/840 (INCLUDED)	120-277	4' SURFACE MOUNTED WITH FIBERGLASS HOUSING, PRISMATIC LENS, LED SYSTEM INTEGRAL DRIVER, POLYURETHANE GASKETING, STAINLESS STEEL LATCHES, EBP AND UL LISTED FOR WET LOCATIONS. SELF-CONTAINED EMERGENCY BATTERY OPERATES 10 WATT.
B2E	METALUX	2V2T-LD5-3-DR-UNV EL10W-L840-CD1 -WL-SSL-U	(1)-22W LED/840 (INCLUDED)	120-277	2' SURFACE MOUNTED WITH FIBERGLASS HOUSING, PRISMATIC LENS, LED SYSTEM INTEGRAL DRIVER, POLYURETHANE GASKETING, STAINLESS STEEL LATCHES, EBP AND UL LISTED FOR WET LOCATIONS. SELF-CONTAINED EMERGENCY BATTERY OPERATES 10 WATT.
C	HALO	PD620D010B PDM6B840/61VC	(1)-21W LED/840 (INCLUDED)	120-277	RECESSED 6" LED LENS DOWNLIGHT WITH PARABOLIC ALUMINUM REFLECTOR, INTEGRAL DRIVER, SELF-FLANGED, SPECULAR CLEAR FINISH AND MOUNTING BRACKETS.
CE	HALO	PD620D010B-1EM PDM6B840/61VC	(1)-21W LED/840 (INCLUDED)	120-277	SAME AS FIXTURE TYPE "C" EXCEPT WITH EMERGENCY BATTERY PACK.
D	HALO	HC630D010- HM634840-61WDCWF RMB22	(1)-27 LED/840	120-277	6" OPEN DOWNLIGHT SELF FLANGED, WIDE BEAM WITH SPECULAR CLEAR FINISH & C-CHANNEL BAR HANGER.
DE	HALO	HC630D010- HM634840-61WDCWF RMB22 1EM14	(1)-27 LED/840	120-277	SAME AS FIXTURE TYPE "D" EXCEPT WITH EMERGENCY BATTERY PACK INSTALLED.
E	SURE-LITES COOPER	LPX7SD90	(1)-1.12W LED (LED LAMPS INCLUDED)	120/277	BACK MOUNT SINGLE FACE EXIT SIGN WITH HIGH IMPACT POLYCARBONATE HOUSING, STENCIL RED FACE, WHITE FACE/HOUSING TEXTURED FINISH, LED LAMP AND NICKEL CADMIUM BATTERY. MOUNT BOTTOM EXIT SIGN 12" CENTERED ABOVE DOOR.
E1	SURE-LITES COOPER	LPX7SD90	(1)-1.12W LED (LED LAMPS INCLUDED)	120/277	TOP MOUNT SINGLE FACE EXIT SIGN WITH IM HI POLYCARBONATE HOUSING, STENCIL RED FACE, WHITE HOUSING FINISH, LED LAMP, NICKEL CADMIUM BATTERY AND CHEVRON DIRECTIONAL INDICATOR KNOCKOUTS AS INDICATED ON PLANS.
E2	SURE-LITES COOPER	LPX7SD90	(1)-1.12W LED (LED LAMPS INCLUDED)	120/277	SAME AS FIXTURE TYPE "E1" EXCEPT WITH DOUBLE FACE.
EC	SURE-LITES COOPER	LPXC2SSD	(1)-3.2W LED (LED LAMPS INCLUDED)	120/277	COMBO BACK MOUNT SINGLE FACE EXIT SIGN WITH HIGH IMPACT POLYCARBONATE HOUSING, STENCIL RED FACE, WHITE FACE/HOUSING TEXTURED FINISH, LED LAMP AND NICKEL CADMIUM BATTERY. MOUNT BOTTOM EXIT SIGN 12" CENTERED ABOVE DOOR.
F	PORTFOLIO	LSR8B90D010-EC8B90840 8LBW3LI	(1)-87 LED/840	277	PENDANT MOUNT WITH 8" REFLECTOR, WIDE SPUN ALUMINUM, SPECULAR CLEAR AND BRONZE FINISHED. PROVIDE REQUIRED CONDUIT PENDANT KIT CONDUIT KNOCKOUT COVER, BRONZE AND ALL ACCESSORIES. REFER TO ARCHITECTURAL SECTIONS AND ELEVATIONS FOR EXACT CONDUIT LENGTH REQUIRED.
FE	PORTFOLIO	LSR8B90D010-EC8B90840 8LBW3LI	(1)-87 LED/840	277	SAME AS FIXTURE TYPE "F" EXCEPT WITH EMERGENCY MODULE INSTALLED.
G	----	----	----	120-277	LIGHT FIXTURES FURNISHED BY OWNER AND INSTALLED BY CONTRACTOR.
H	HALO	PR840D010/PR8M34-MD -MW	(1)-44W LED/840 (INCLUDED)	120	RECESSED 8" SHALLOW LENSED LED DOWNLIGHT WED. DISTRIBUTION SHIELDING, INTEGRAL DRIVER, SELF-FLANGED AND MOUNTING BRACKETS. U.L. LISTED FOR WET LOCATION.
J	LUMARK	AXCL10A	(1)-102W LED 4000K INCLUDED	277	WALL MOUNT FULL CUTOFF LOW-PROFILE WITH LED FLOODLIGHT WITH DIE-CAST ALUMINUM CONSTRUCTION WHITE FINISH, SILICONE SEALED OPTICAL LED IMPACT-RESISTANT MOLDED REFRACTIVE PRISM, COLD WEATHER BALLAST AND U.L. LISTED FOR WET LOCATIONS.
J1	LUMARK	CLCS17-840	(1)-56W LED 4000K INCLUDED	277	SURFACE MOUNT WITH DIE-CAST ALUMINUM HOUSING LED CANOPY, TETHERED, QUICK MOUNT PLATE, UV-RESISTANT POLYCARBONATE LENS, COLD WEATHER LED DRIVER, 0.9 POWER FACTOR, BRONZE FINISH AND U.L. LISTED FOR WET LOCATIONS.
P	McGRAW-EDISON KWI	GLEON-SA4B-740-U-5MQ -BZ SSP25-5.0-7-BRZ -DM2180-BC (130 MPH) □=□	(2)-266W LED/740 INCLUDED	277	25"-0" STEEL SQUARE POLE WITH DURAGRIP PLUS SINGLE MOUNT FIXTURE WITH DIE FORMED HEAVY GAUGE ALUM. CONSTRUCTION, COMPLETELY GASKETED, HEAT RESISTANT FLAT CLEAR TEMPERED GLASS, TENON MOUNT, BRONZE FINISH, LED AND U.L. LISTED FOR WET LOCATION.
P1	McGRAW-EDISON KWI	GLEON-SA4B-740-U-T3 -BZ SSP25-5.0-7-BRZ -DM10-BC (130 MPH) □=□	(1)-266W LED/740 INCLUDED	277	25"-0" STEEL SQUARE POLE WITH DURAGRIP PLUS SINGLE MOUNT FIXTURE WITH DIE FORMED HEAVY GAUGE ALUM. CONSTRUCTION, COMPLETELY GASKETED, HEAT RESISTANT FLAT CLEAR TEMPERED GLASS, TENON MOUNT, BRONZE FINISH, LED AND U.L. LISTED FOR WET LOCATION.
P2	McGRAW-EDISON KWI	GLEON-SA4B-740-U-5MQ -BZ SSP25-5.0-7-BRZ -DM2090-BC (130 MPH) □=□	(2)-266W LED/740 INCLUDED	277	25"-0" STEEL SQUARE POLE WITH DURAGRIP PLUS SINGLE MOUNT FIXTURE WITH DIE FORMED HEAVY GAUGE ALUM. CONSTRUCTION, COMPLETELY GASKETED, HEAT RESISTANT FLAT CLEAR TEMPERED GLASS, TENON MOUNT, BRONZE FINISH, LED AND U.L. LISTED FOR WET LOCATION.

ELECTRICAL SYMBOLS	
	REFERENCE TO DETAIL AND SHEET NUMBER
	SURFACE MOUNTED PANEL
	FLUSH MOUNTED PANEL
	LED LIGHT FIXTURE
	LED EMERGENCY LIGHT FIXTURE
	CEILING MOUNTED DOWNLIGHT LIGHT FIXTURE
	CEILING MOUNTED EXIT LIGHT FIXTURE
	WALL MOUNTED EXIT LIGHT FIXTURE
	NEUTRAL CONDUCTOR
	PHASE CONDUCTOR
	GROUND CONDUCTOR
	ISOLATED GROUND & GROUND CONDUCTOR
	SWITCH LEG AND/OR BRANCH CIRCUIT
	BRANCH CIRCUIT
	HOME RUN TO PANELBOARD
	SWITCH, 48" AFF
	THREE-WAY SWITCH, 48" AFF
	THREE-WAY DIMMER SWITCH, 48" AFF
	MOTOR RATED SWITCH
	SWITCH WITH PILOT LIGHT, 48" AFF
	OCCUPANCY SENSOR SWITCH, 48" AFF
	OCCUPANCY SENSOR DIMMER SWITCH, 48" AFF
	MOTOR
	DISCONNECT SAFETY SWITCH
	COMBINATION MOTOR STARTER AND DISCONNECT SAFETY SWITCH
	HARDWIRED CONNECTION
	DUPLEX RECEPTACLE, 12" AFF
	DUPLEX RECEPTACLE ABOVE CEILING
	FLOOR MOUNTED DUPLEX RECEPTACLE
	ISOLATED GROUND DUPLEX RECEPTACLE
	DUPLEX RECEPTACLE WITH MOUNTING HEIGHT
	WEATHER PROOF DUPLEX RECEPTACLE
	GROUND FAULT CIRCUIT INTERRUPTER DUPLEX RECEPTACLE
	DOUBLE DUPLEX RECEPTACLE, 12" AFF
	ISOLATED GROUND DOUBLE DUPLEX RECEPTACLE, 12" AFF
	DOUBLE DUPLEX RECEPTACLE WITH MOUNTING HEIGHT
	CEILING MOUNTED JUNCTION BOX
	WALL MOUNTED JUNCTION BOX
	DATA AND/OR VOICE OUTLETS, 12" AFF (DOUBLE DUPLEX CAT 5)
	DATA AND/OR VOICE OUTLETS, 12" AFF (DUPLEX CAT 5)
	CEILING MOUNTED DATA AND/OR VOICE OUTLETS (DOUBLE DUPLEX CAT 5)
	FLOOR MOUNTED DATA AND/OR VOICE OUTLETS (DOUBLE DUPLEX CAT 5)
	DATA AND/OR VOICE OUTLETS WITH MOUNTING HEIGHT (DOUBLE DUPLEX CAT 5)
	TV DATA OUTLET
	DUCT MOUNTED SMOKE DETECTOR WITH INDICATOR LIGHT
	PHOTO ELECTRIC CONTROL, 108" AFF
	LIGHTING CONTACTOR, 54" AFF
	SHUT DOWN RELAY
	CEILING MOUNTED OCCUPANCY SENSOR
ABBREVIATIONS	
A	AMPERES
AIC	AMPS INTERRUPTING CURRENT
AFF	ABOVE FINISHED FLOOR
C	CONDUIT
CU	COPPER
CB	CIRCUIT BREAKER
FD	FUSED DISCONNECT SAFETY SWITCH
GND	GROUND CONDUCTOR
IG	ISOLATED GROUND
KVA	KILOVOLT--AMPS
MLO	MAIN LUGS ONLY
MCB	MAIN CIRCUIT BREAKER
NEC	NATIONAL ELECTRICAL CODE
NFD	NON--FUSED DISCONNECT SAFETY SWITCH
UC	UNDER COUNTER
V	VOLTS
WP	WEATHERPROOF

ELECTRICAL NOTES	
(E1)	COORDINATE EXACT LOCATION OF ALL LIGHT FIXTURES WITH ACTUAL CEILING GRID SYSTEMS AND STRUCTURES. REFERENCE ARCHITECTURAL REFLECTED CEILING PLAN, WALLS, ROOF/CEILING STRUCTURES, SECTIONS & ELEVATIONS. IN EXPOSED CEILING STRUCTURES, CONFIRM WITH ENGINEER AND ARCHITECT EXACT CONDUIT ROUTING PRIOR TO MAKE INSTALLATION AND MUST BE CONCEALED AS MUCH AS POSSIBLE.
(E2)	INSTALL INTERMATIC PHOTO ELECTRIC CONTROL SERIES K4533 WITH COMPLETE OF ACCESSORIES AND ADJUSTABLE STEM TO CONTROL HA-1 TO HA-13 THROUGH 16 POLES, 30 AMP, 120V, NEMA 1, MECHANICALLY HELD LIGHTING CONTACTOR "C" WITH CONTROL RELAY. LOCATE PHOTO ELECTRIC CONTROL AT 9'-0" AFF OR AS REQUIRED TO FACE FACE NORTH. CONNECT PHOTO ELECTRIC CONTROL AND LIGHTING CONTACTOR "C" TO HA-14.
(E3)	MOUNT LIGHT FIXTURE "F", "FE" AND TRACK LIGHTS AT 25'-0" AFF. PROVIDE GALVANIZED 3/4" THREADED RODS & UNISTRUTS SUPPORTS WITH ALL MOUNTING ACCESSORIES. REFER TO ARCHITECTURAL SECTIONS AND ELEVATIONS FOR EXACT REQUIREMENTS.
(E4)	INSTALL SINGLE GANG DEEP WALL BOX WITH APPROPRIATE COVER PLATE CABLE TV OUTLET. PROVIDE (1)-3/4" EMPTY CONDUIT WITH PULL STRING FROM SINGLE GANG DEEP WALL UP WALL TO 6" ABOVE ACCESSIBLE CEILING WITH BUSHING. FIELD CONFIRM EXACT LOCATION OF CABLE TV OUTLET AND DUPLEX RECEPTACLE WITH OWNER PRIOR TO MAKE FINAL INSTALLATION.
(E5)	INSTALL SINGLE GANG DEEP FLOOR BOX WITH APPROPRIATE COVER PLATE CABLE TV OUTLET. PROVIDE (1)-1" EMPTY CONDUIT WITH PULL STRING FROM SINGLE GANG DEEP FLOOR BOX UP WALL TO 6" ABOVE ACCESSIBLE CEILING WITH BUSHING.
(E6)	INSTALL SINGLE GANG DEEP WALL BOX WITH APPROPRIATE COVER PLATE FOR DATA AND/OR VOICE OUTLETS. PROVIDE (1)-1" EMPTY CONDUIT WITH PULL STRING FROM SINGLE GANG DEEP WALL BOX UP WALL TO 6" ABOVE ACCESSIBLE CEILING WITH BUSHING.
(E7)	INSTALL WALL AND/OR BACK BOX WITH 3/4" EMPTY CONDUIT WITH PULL STRING UP WALL TO 6" ABOVE ACCESSIBLE CEILING WITH BUSHING FOR FIRE ALARM AND/OR SECURITY DEVICES. CONFIRM ALL REQUIREMENTS WITH FIRE ALARM AND SECURITY SYSTEMS INSTALLER. ALL LOCATIONS AND REQUIREMENTS OF SECURITY SYSTEM MUST BE CONFIRMED AND COORDINATED WITH SECURITY SYSTEM INSTALLER. FIRE ALARM AND SECURITY SYSTEMS INSTALLER TO PROVIDE SEPERATE DRAWINGS PER NFPA 72 AND 101.
(E8)	INSTALL 4"x8"x3/4" GRADE PLYWOOD ON WALL AS SHOWN FOR DATA, VIDEO & TELEPHONE BOARD. PAINT TO MATCH WALL COLOR. PROVIDE GROUNDING WITH #6 GROUND CONDUCTOR AND TO CONNECT TO ELECTRICAL SERVICE GROUND ROD. INSTALL (2)-3" EMPTY CONDUIT WITH PULL STRINGS FROM 6" STUB UP BELOW TELEPHONE BOARD DOWN UNDERGROUND UP TO 12" STUB UP ABOVE FINISHED GRADE 6" AWAY FROM ENTERGY POWER POLE. FIELD COORDINATE EXACT CONDUIT TERMINATION WITH TELEPHONE AND/OR CABLE COMPANY PRIOR TO MAKE FINAL INSTALLATION. REFER TO SHEET MEP AND CIVIL DRAWINGS EXACT LOCATION OF ENTERGY POWER POLE AND ROUTING OF CONDUIT.
(E9)	INSTALL (6)-1" EMPTY CONDUIT WITH PULL STRINGS FROM 6" STUB-UP UNDER COUNTER DOWN UNDER FLOOR UP WALL TO 6" ABOVE ACCESSIBLE CEILING WITH BUSHING IN CORRIDOR 4 127. CONFIRM EXACT REQUIREMENTS WITH OWNER PRIOR TO MAKE FINAL INSTALLATION.
(E10)	INSTALL (2)-1" EMPTY CONDUIT WITH PULL STRINGS FROM 6" STUB-UP UNDER COUNTER DOWN UNDER FLOOR UP TO 6" ABOVE FINISHED FLOOR BELOW PODIUM 132. CONFIRM EXACT REQUIREMENTS WITH OWNER PRIOR TO MAKE FINAL INSTALLATION.
(E11)	LOCATE RECEPTACLE BEHIND ELECTRIC WATER COOLER ENCLOSURE. FIELD COORDINATE EXACT REQUIREMENTS AND LOCATION WITH PLUMBING CONTRACTOR.
(E12)	INSTALL SINGLE GANG WALL BOX WITH APPROPRIATE COVER PLATE FOR HVAC THERMOSTAT. PROVIDE 3/4" EMPTY CONDUIT WITH PULL STRING FROM SINGLE GANG WALL BOX UP TO 6" ABOVE ACCESSIBLE CEILING WITH BUSHING. COORDINATE EXACT LOCATION WITH DIVISION 15, MECHANICAL CONTRACTOR. REFER TO MECHANICAL FLOOR PLAN, SHEET 1/M.1 FOR LOCATION OF WALL MOUNTED THERMOSTAT.
(E13)	ROUGH-IN AND MAKE FINAL CONNECTIONS TO EQUIPMENT SPECIFIED IN OTHER DIVISIONS, OR FURNISHED BY OWNER. FIELD CONFIRM WITH EQUIPMENT SUPPLIER AND/OR INSTALLER EXACT REQUIREMENTS PRIOR BIDDING AND INSTALLATION.
(E14)	ALL LOCATIONS OF ELECTRICAL AND TECHNOLOGY DEVICES MUST BE CONFIRMED WITH ARCHITECTURAL SECTIONS, ELEVATIONS, MILLWORKS AND CASEWORK PRIOR TO MAKE FINAL INSTALLATIONS. ALL CHANGES DUE TO CONFLICT OF LOCATIONS AND/OR LACK OF ARCHITECTURAL SHEETS COORDINATION SHALL BE MADE WITHOUT ADDITIONAL EXPENSE TO THE OWNER.
(E15)	ALL CONDUIT PENETRATIONS AT FIRE RATED WALLS MUST BE PROVIDED WITH SCHEDULE 40 GALVANIZED CONDUIT SLEEVE SECURED TO PARTITION WITH GROUT AND CAULK ANNULAR SPACE BETWEEN CONDUIT AND SLEEVE WITH FIRE RETARDANT SEALANT. WHERE CONDUIT IS EXPOSED AT FINISHED WALLS, PROVIDE FLUSH MOUNTED SLEEVE AND STAINLESS STEEL ESCUTCHEON PLATES. AT NON-FIRE RATED INTERIOR WALLS, CAULK ANNULAR SPACE BETWEEN CONDUIT AND SLEEVE WITH 1 LB. DENSITY FIBERGLASS AND SEAL ENDS WITH DOW CORNING 732 RTV OR EQUAL.
(E16)	ALL EXHAUST FANS (120V/19) ARE SPECIFIED WITH FACTORY INSTALLED DISCONNECT SAFETY SWITCH. MOTOR STARTERS ARE PROVIDED AND INSTALLED BY ELECTICAL CONTRACTOR. THERMOSTATS, FAN INTERLOCKS AND HVAC CONTROLS ARE ALL PROVIDED AND INSTALLED UNDER DIVISION 15. CONFIRM WITH DIVISION 15 AND MECHANICAL SCHEDULES.
(E17)	COORDINATE AND CONFIRM HORSEPOWER RATING AND LOCATION OF ALL MECHANICAL AND PLUMBING EQUIPMENT WITH DIVISION 15 AND MECHANICAL SCHEDULES PRIOR TO ORDERING AND INSTALLATION OF DISCONNECT SAFETY SWITCHES, MOTOR STARTERS OR COMBINATION MOTOR STARTERS.
(E18)	ALL LIGHTING CIRCUITS SHALL HAVE SEPARATE NEUTRALS. NO SHARED NEUTRALS.

FIRE ALARM & SMOKE DETECTION SYSTEM NOTES	
1.	IT SHALL BE THE RESPONSIBILITY OF THE ELECTRICAL CONTRACTOR TO PROVIDE ALL CONDUIT SYSTEMS AND ELECTRICAL CEILING/WALL BOXES REQUIRED BY FIRE ALARM SYSTEM INSTALLER.
2.	FIRE ALARM INSTALLER TO PROVIDE A SEPARATE DRAWINGS SHOWING ALL DEVICES PER NFPA 72/101 AND LOCAL CODES. COORDINATE AND CONFIRM WITH ELECTRICAL CONTRACTOR PRIOR TO SUBMIT BIDDING. FIRE ALARM SYSTEM MUST BE INCLUDED UNDER ELECTRICAL CONTRACTOR BIDS.



ARCHITECT HAS REVIEWED THE CONSULTANT'S WORK AND COORDINATED IT WITH THE OVERALL PROJECT

UNITED CHRISTIAN ACADEMY
First Pentecostal Church
Nederland, TX 77627

ISSUED FOR SCHEMATIC DESIGN	<input checked="" type="checkbox"/>
DATE: X	
DESIGN DEVELOPMENT	<input checked="" type="checkbox"/>
DATE: X	
BIDS & CONSTRUCTION	<input checked="" type="checkbox"/>
DATE: 8/22/2021	
REVISION: A	
DATE: 8/22/2021	
REVISION:	
DATE:	
REVISION:	
DATE:	

DRAWINGS SHEET TITLE
ELECTRICAL
NOTES, SYMBOLS
& LIGHT FIXTURE
SCHEDULE

SHEET NUMBER
E.7
20105
PROJECT NUMBER

ARCHITECT HAS REVIEWED
THE CONSULTANT'S WORK
AND COORDINATED IT WITH
THE OVERALL PROJECT

UNITED CHRISTIAN ACADEMY

First Pentecostal Church

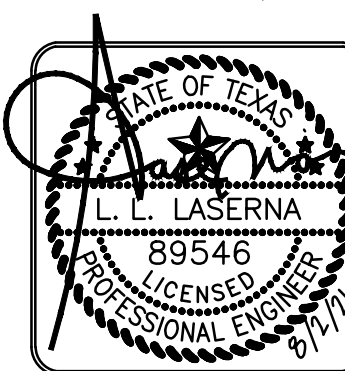
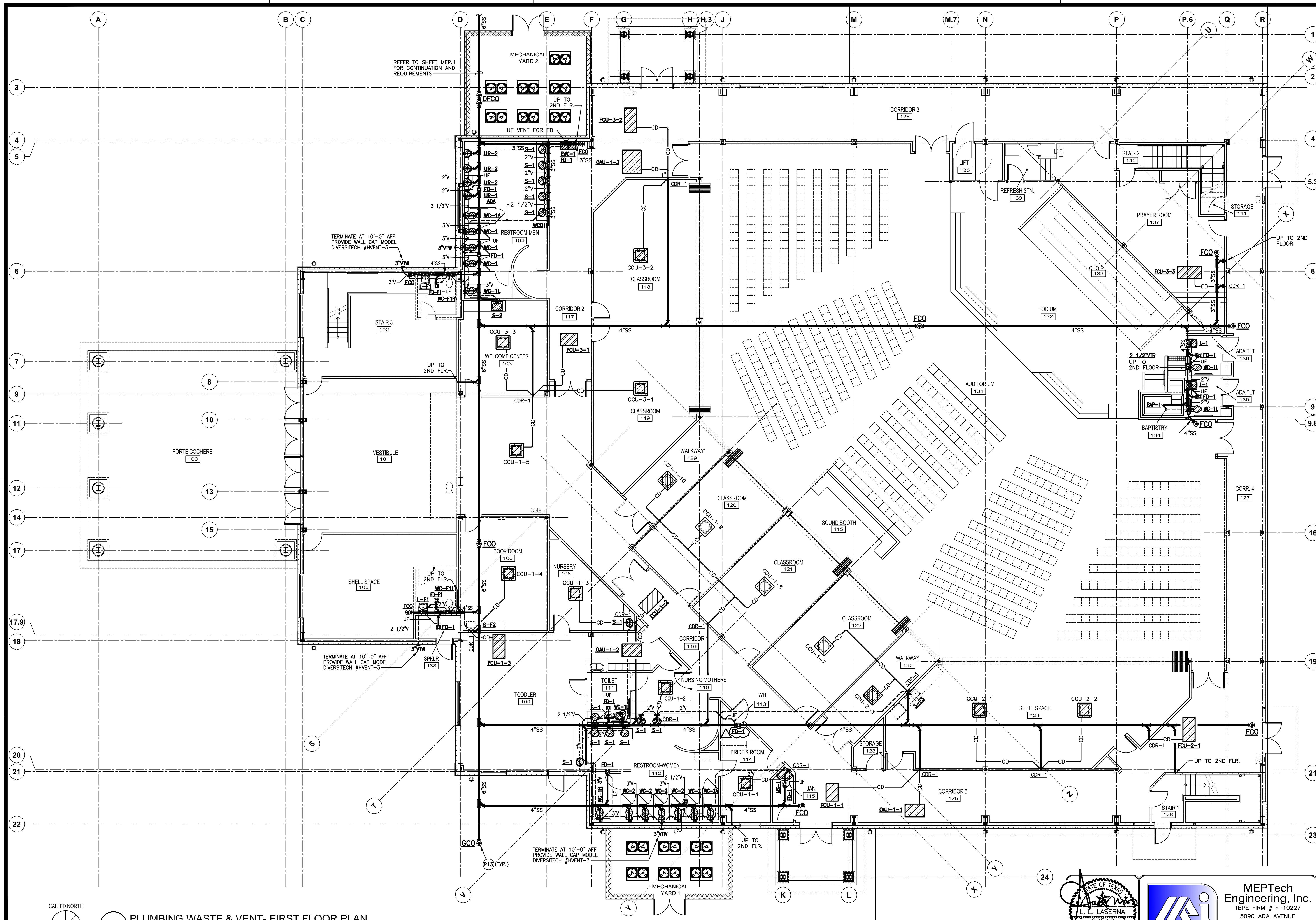
Nederland, TX 77627

Highway 69

ISSUED FOR SCHEMATIC DESIGN	<input type="checkbox"/>
DATE:	
DESIGN DEVELOPMENT	<input type="checkbox"/>
DATE:	
BIDS & CONSTRUCTION	<input checked="" type="checkbox"/>
DATE: 8/02/2021	
REVISION:	
DATE: 8/26/2021	
REVISION:	
DATE: MM-DD-YYYY	
REVISION:	
DATE: MM-DD-YYYY	

DRAWINGS SHEET TITLE
PLUMBING
WASTE & VENT
FIRST FLOOR
PLAN

SHEET NUMBER
P.1
20105
PROJECT NUMBER



MEPTech
Engineering, Inc.
TBE FIRM # F-10227
5090 ADA AVENUE
BEAUMONT, TEXAS 77708-4411
PHONE: (409) 673-2013
FAX: (409) 767-9224

1 PLUMBING WASTE & VENT- FIRST FLOOR PLAN
SCALE: 1/8" = 1'-0"