

DEFINE

PLUMBING & SPRINKLER ABBREVIATIONS

AD	ACCESS DOOR	HP	HORSE POWER
ADA	AMERICANS WITH DISABILITIES ACT	HS	HOSE STATION
AFF	ABOVE FINISHED FLOOR	HW	HAND WASH
AV	ACID VENT	ICE	ICE MACHINE WATER CONNECTION
AW	ACID WASTE	L	LAVATORY
BOP	BOTTOM OF PIPE	LS	LIFT STATION (SANITARY SEWER)
BP	BACKFLOW PREVENTER	MH	MANHOLE
BT	BATH TUB	MV	MIXING VALVE
BTUH	BRITISH THERMAL UNITS PER HOUR	N.O.	NORMALLY OPEN
C	CONDENSATE DRAIN LINE	N.C.	NORMALLY CLOSED
CA	COMPRESSED AIR LINE	NTS	NOT TO SCALE
CB	CATCH BASIN	P	PUMP
CFM	CUBIC FEET PER MINUTE	PIV	POST INDICATING VALVE
CI	CAST IRON	PRV	PRESSURE REDUCING VALVE
CO	CLEANOUT	PSIG	POUNDS PER SQUARE INCH GAGE
CSS	CLINIC SERVICE SINK	PT	PLASTER TRAP
CP	CIRCULATING WATER PUMP	REF	REFRIGERATOR WATER CONNECTION BOX
D	DRAIN LINE	RD	ROOF DRAIN
DF	DRINKING FOUNTAIN	RPM	REVOLUTIONS PER MINUTE
DCW	DOMESTIC COLD WATER LINE	SAN	SANITARY SEWER
DHR	DOMESTIC HOT WATER RETURN LINE	SD	STORM DRAIN
DHW	DOMESTIC HOT WATER LINE	SF	SQUARE FOOT
DS	DRENCH SHOWER	SH	SHOWER
DSEW	DRENCH SHOWER WITH EYE WASH	SK	SINK
DT	DILUTION TRAP	SMH	SEWER MANHOLE
DW	DISHWASHER	SS	SERVICE SINK
ET	EXPANSION TANK	STP	SEWER TREATMENT PLANT
EW	EYE WASH	TD	TRENCH DRAIN
EWC	ELECTRIC WATER COOLER	TP	TRAP PRIMER
EWH	ELECTRIC WATER HEATER	TYP	TYPICAL
FCO	FLOOR CLEANOUT	U	URINAL
FD	FLOOR DRAIN	UNO	UNLESS NOTED OTHERWISE
FDC	FIRE DEPARTMENT CONNECTION	V	VENT
FFE	FINISHED FLOOR ELEVATION	VAC	VACUUM
FH	FIRE HYDRANT	VB	VACUUM BREAKER
FS	FLOOR SINK	VTR	VENT THRU ROOF
GD	GARBAGE DISPOSAL	W	WASHER WATER/DRAIN CONNECTION LINE
GPH	GALLONS PER HOUR	WC	WATER CLOSET
GPM	GALLONS PER MINUTE	WCO	WALL CLEANOUT
GT	GREASE TRAP	WF	WASH FOUNTAIN
GWH	GAS FIRED WATER HEATER	WG	WATER GAGE
HB	HOSE BIB	WP	WHIRL POOL
HD	HUB DRAIN	ZVB	ZONE VALVE BOX (MEDICAL GAS)

DESIGN

PLUMBING & SPRINKLER LEGEND

PIPING				VALVES			
EXISTING	DEMO	NEW	DESCRIPTION	EXISTING	DEMO	NEW	DESCRIPTION
---	--DCW--	---	DOMESTIC COLD WATER LINE	---	--+S--	---	BALL VALVE (SHUT-OFF)
---	--DHW--	---	DOMESTIC HOT WATER LINE (110°)	---	--+S--	---	BALL VALVE (SHUT-OFF)
---	--DHR--	---	DOMESTIC HOT WATER RETURN LINE	---	---	---	SHUT-OFF VALVE IN CAST IRON VALVE BOX
---	--(X°F)--	---	DOMESTIC HOT WATER LINE (X=TEMP.)	---	---	---	CALIBRATED BALANCING VALVE
---	---	---	SANITARY SEWER LINE (SAN)	---	---	---	CHECK VALVE
---	V	V	SANITARY SEWER VENT LINE	---	---	---	OS&Y VALVE
---	SD	SD	STORM DRAIN LINE (PRIMARY)	---	---	---	GAS COCK
---	OSD	OSD	OVERFLOW STORM DRAIN LINE (SECONDARY)	---	---	---	BUTTERFLY VALVE
---	C	C	CONDENSATE DRAIN LINE	---	---	---	VALVE IN RISE
---	GW	GW	GREASE WASTE DRAIN LINE	---	---	---	2-WAY CONTROL VALVE
---	AW	AW	ACID WASTE DRAIN LINE	---	---	---	3-WAY CONTROL VALVE
---	F	F	FIRE MAIN WATER LINE	EQUIPMENT			
---	S	S	SPRINKLER LINE				
---	G	G	NATURAL GAS LINE	EXISTING	DEMO	NEW	DESCRIPTION
---	LP	LP	PROPANE GAS LINE	---	---	---	PLUMBING FIXTURES
---	CA	CA	COMPRESSED AIR LINE	---	---	---	METER
---	RO	RO	REVERSE OSMOSIS PURE WATER SUPPLY LINE	---	---	---	REGULATOR
---	ROR	ROR	REVERSE OSMOSIS PURE WATER RETURN LINE	SYMBOL (MISC.)			
---	DI	DI	DIONIZED PURE WATER SUPPLY LINE	EXISTING	DEMO	NEW	DESCRIPTION
---	O	O	OXYGEN LINE (MEDICAL)	---	---	---	CONNECT TO EXISTING SERVICES
---	VAC	VAC	VACUUM LINE (MEDICAL)	---			
---	N	N	NITROGEN LINE (MEDICAL)	---			
---	NO	NO	NITROUS OXIDE (MEDICAL)	---			
---	MA	MA	AIR (MEDICAL)	---			
---	WAGD	WAGD	WASTE ANESTHETIC GAS DISPOSAL	---			
PIPE FITTING							
EXISTING	DEMO	NEW	DESCRIPTION				
---	---	---	CAPPED PIPE				
---	---	---	PIPE RISE				
---	---	---	PIPE DROP				
---	---	---	UNION				
---	---	---	DIRECTION OF FLOW				
---	---	---	PIPE SUPPORT OR BRACING				
---	---	---	PIPE CONNECTION (TOP)				
---	---	---	PIPE CONNECTION (BOTTOM)				
---	---	---	PIPE CONNECTION (SIDE)				
---	---	---	CAPPED OUTLET TOP				
---	---	---	PIPE REDUCER AND/OR INCREASER				

- NOTES: 1. EXISTING ITEMS ON DEMO PLANS ARE "EXISTING TO REMAIN" UNLESS NOTED "EXISTING TO BE RELOCATED."
 2. ITEMS ON NEW CONSTRUCTION PLANS ARE NEW UNLESS NOTED "RELOCATED FROM PREVIOUS LOCATION". REFER TO SCHEDULES AND SPECIFICATIONS FOR PLUMBING FIXTURES.
 3. NOT ALL ITEMS SHOWN ON THIS LIST MAY BE APPLICABLE TO THIS PROJECT.

DELIVER

PLUMBING & SPRINKLER GENERAL NOTES

- CONTRACTOR SHALL VISIT THE SITE AND DETERMINE THE EXTENT OF DEMOLITION WORK AND NEW WORK NEEDED FOR THIS PROJECT, PRIOR TO SUBMITTING BID.
- CONTRACTOR SHALL BECOME FAMILIAR WITH THE PROJECT SCOPE, CONSTRAINTS, UTILITY CONNECTIONS, AND BUILDING SERVICES, PRIOR TO SUBMITTING BID.
- CONTRACTOR SHALL GIVE FIRST RIGHT TO REFUSAL OF SALVAGE TO THE OWNER. IF THE OWNER ELECTS TO NOT KEEP SALVAGE, CONTRACTOR SHALL REMOVE SALVAGE BY LAWFUL MEANS.
- DRAWINGS ARE SCHEMATIC AND DIAGRAMMATIC IN NATURE. DRAWINGS SHALL NOT BE SCALED. COORDINATE ROUTING OF SERVICES WITH SITE CONDITIONS AND WITH WORK OF OTHER TRADES.
- FIELD VERIFY DIMENSIONS PRIOR TO ORDERING, FABRICATING, AND ERECTION OF MATERIAL AND/OR EQUIPMENT. NOTIFY THE ENGINEER OF DISCREPANCIES IN A TIMELY MANNER.
- VERIFY CLEARANCE REQUIREMENTS AND ROUTING OF PIPING PRIOR TO FABRICATION. AS MINOR MODIFICATIONS SUCH AS PIPING RISES AND DROP MAY BE REQUIRED DUE TO FIELD CONDITIONS, MAKE MINOR MODIFICATIONS TO THE BUILDING, PIPING, SPRINKLER, DUCTWORK, ELECTRICAL, ETC. AS SHOWN ON THE DRAWINGS OR REQUIRED TO COMPLETE THE INSTALLATION OF A COMPLETED WORKABLE SYSTEM.
- MAINTAIN WEATHER-TIGHT BARRIERS TO PREVENT DAMAGE FROM THE ELEMENTS DURING DEMOLITION AND NEW CONSTRUCTION PERIOD.
- SEAL PENETRATIONS THROUGH THE BUILDING ENVELOPE.
- PENETRATIONS THROUGH RATED WALLS, FLOORS, PARTITIONS AND ASSEMBLIES SHALL BE INSTALLED AND FIRESAFED TO MEET UL FIRE RESISTANCE LISTING AND NFPA REQUIREMENTS FOR THE PENETRATION.
- COORDINATE DEVICES REQUIRING ACCESS PANELS WITH THE ARCHITECT AND OTHER TRADES.
- MAINTAIN MINIMUM CLEARANCE 10'-0" BETWEEN OUTSIDE INTAKES AND EXHAUST OUTLETS AND PLUMBING VENTS.
- COORDINATE FINAL LOCATIONS AND ELEVATIONS WITH THE ARCHITECT PRIOR TO INSTALLATION.
- COORDINATE FINAL FINISH COLORS OF MATERIALS, DEVICES, AND/OR EQUIPMENT WITH THE ARCHITECT PRIOR TO ORDERING, FABRICATION AND INSTALLATION.
- SCHEDULE UTILITY SERVICES SHUTDOWNS WITH OWNER AND ARCHITECT. MINIMIZE DISRUPTIONS AND DOWNTIME TO THE OWNER.
- INSTALL DEVICES AND EQUIPMENT TO MEET ADA REQUIREMENTS.
- ROUTE PIPING CONCEALED IN INTERSTITIAL SPACE UNLESS NOTED OTHERWISE.
- DOCUMENT LOCATIONS OF DEVICES, PIPING, AND EQUIPMENT ON "AS-BUILT" RECORD DRAWINGS AS PER THE SPECIFICATIONS.
- PAY FOR SERVICE, DEPOSITS, INSPECTION, AND CONNECTION FEES REQUIRED FOR A COMPLETE INSTALLATION. COORDINATE WITH THE UTILITY SERVICE PROVIDER FOR THE REQUIREMENTS NEEDED FOR THIS PROJECT.
- WORK SHOWN IN THE DRAWINGS SHALL COMPLY WITH APPLICABLE NATIONAL, STATE, AND LOCAL ORDINANCES AND CODES.
- ALL EXPOSED DOMESTIC COLD AND HOT WATER PIPING WITHIN THE BUILDING SHALL HAVE FIELD INSTALL PVC JACKET.
- WATER HAMMER ARRESTER(S) SHALL BE INSTALLED ON PIPING SYSTEMS AND AT QUICK-CLOSING VALVES AS PER MANUFACTURER'S RECOMMENDATIONS.
- SAWCUT, PATCH AND REPAIR CONCRETE TO ACCOMMODATE INSTALLATION OF NEW SEWER AND TRAP PRIMER LINES BELOW GRADE. COORDINATE WITH GENERAL CONTRACTOR. REFER TO ARCHITECTURAL DRAWINGS FOR ADDITIONAL INFORMATION.

meconsulting.com



SMITH BUILDING RENOVATION

SPINDLETOP CENTER

BEAUMONT, TX 77701

655 S. 8TH STREET

ISSUED FOR SCHEMATIC DESIGN

DATE: _____

DESIGN DEVELOPMENT

DATE: _____

BIDS & CONSTRUCTION

DATE: 6/13/22

REVISION: _____

DATE: _____

REVISION: _____

DATE: _____

REVISION: _____

DATE: _____

DRAWINGS SHEET TITLE

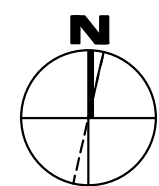
PLUMBING LEGEND & GENERAL NOTES

SHEET NUMBER

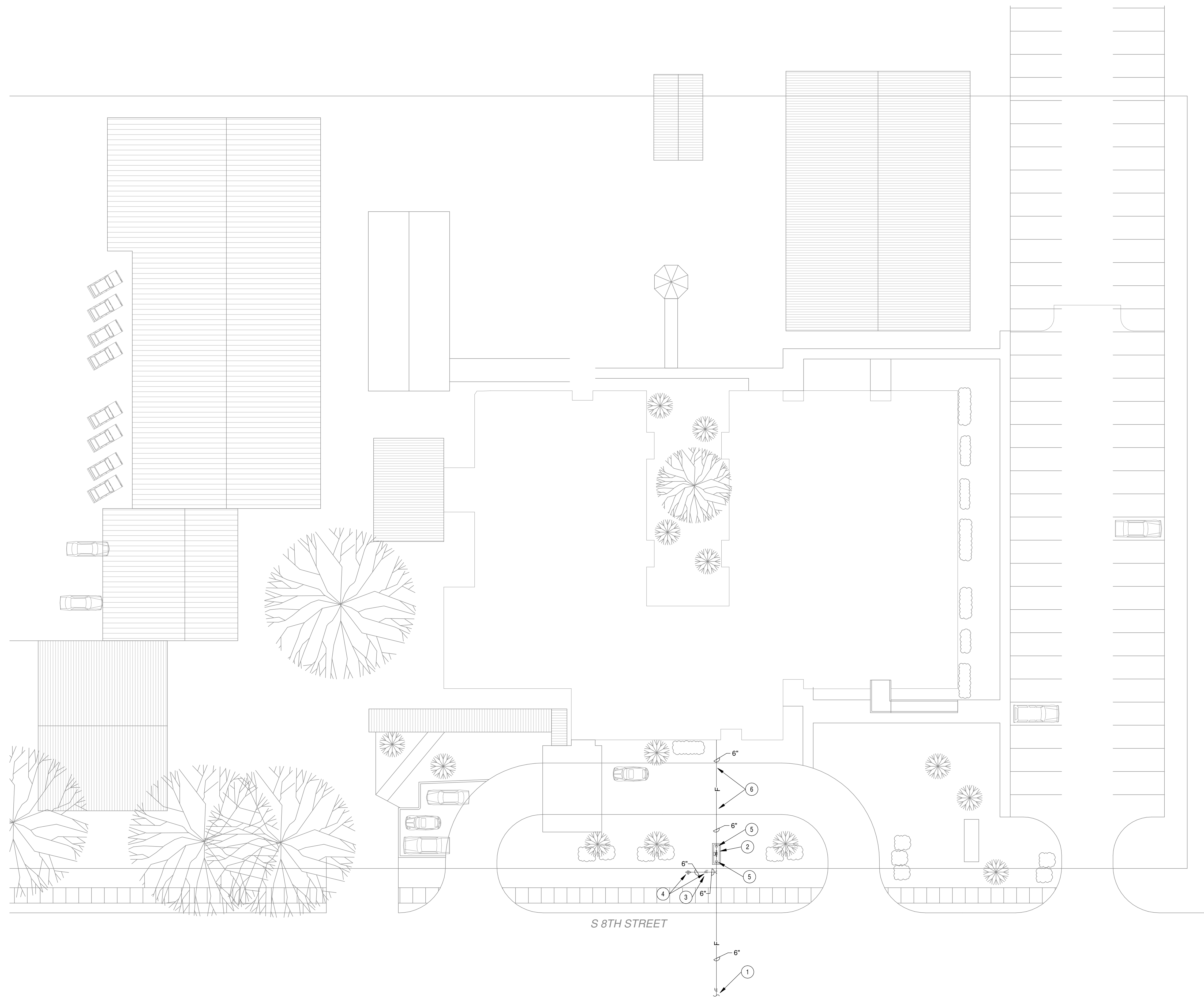
P000

21032

PROJECT NUMBER



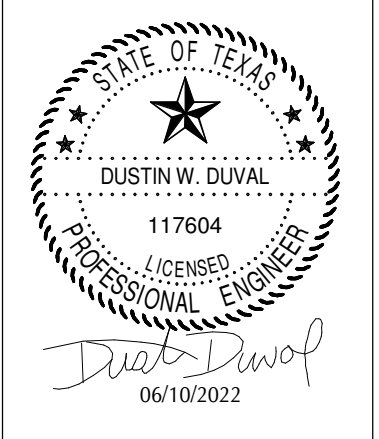
CALLED NORTH



- PLUMBING KEYNOTES:**
- 1 EXTEND AND CONNECT TO EXISTING 6" CITY WATER MAIN ON THE WEST SIDE OF THE STREET WITH TAPPING SLEEVE AND VALVE. CONTRACTOR SHALL JACK AND BORE UNDER THE STREET AS REQUIRED. CONTRACTOR SHALL SAWCUT AND PATCH STREET WHERE CITY MAIN WATER LINE IS LOCATED TO MAKE CONNECTION AS REQUIRED. CONTRACTOR SHALL COORDINATE ALL REQUIREMENTS WITH LOCAL UTILITY COMPANY AND PAY FOR ALL CONNECTION FEES.
 - 2 DOUBLE CHECK DETECTOR ASSEMBLY WITH BY-PASS WATER METER WITHIN ALUMINUM INSULATED ENCLOSURE WITH HEATER.
 - 3 6" SHUT-OFF VALVE IN CAST IRON VALVE BOX MARKED "WATER" ON COVER.
 - 4 NEW FIRE HYDRANT AND ISOLATION VALVE. FIRE HYDRANT SHALL HAVE THREADS APPROVED BY LOCAL FIRE DEPARTMENT.
 - 5 INSTALL THRUST BLOCK AT ALL BENDS IN WATER PIPING BELOW GRADE.
 - 6 CONTRACTOR SHALL JACK & BORE UNDER DRIVEWAY.

AAI
Architectural Alliance Incorporated

350 Pine Street, Suite 720
Beaumont, Texas 77701
TEL: (409) 886-7100
FAX: (409) 886-1700
J. RICE CLARK, A.L.A.
RONALD W. JONES, A.L.A.
www.aaiarchitect.com



SMITH BUILDING RENOVATION
SPINDLETOP CENTER

655 S. 8TH STREET
BEAUMONT, TX 77701

ISSUED FOR SCHEMATIC DESIGN	<input type="checkbox"/>
DATE:	
DESIGN DEVELOPMENT	<input type="checkbox"/>
DATE:	
BIDS & CONSTRUCTION	<input checked="" type="checkbox"/>
DATE: 6/13/22	
REVISION:	
DATE:	
REVISION:	
DATE:	
REVISION:	
DATE:	

DRAWINGS SHEET TITLE
PLUMBING SITE PLAN

SHEET NUMBER
P100

21032
PROJECT NUMBER

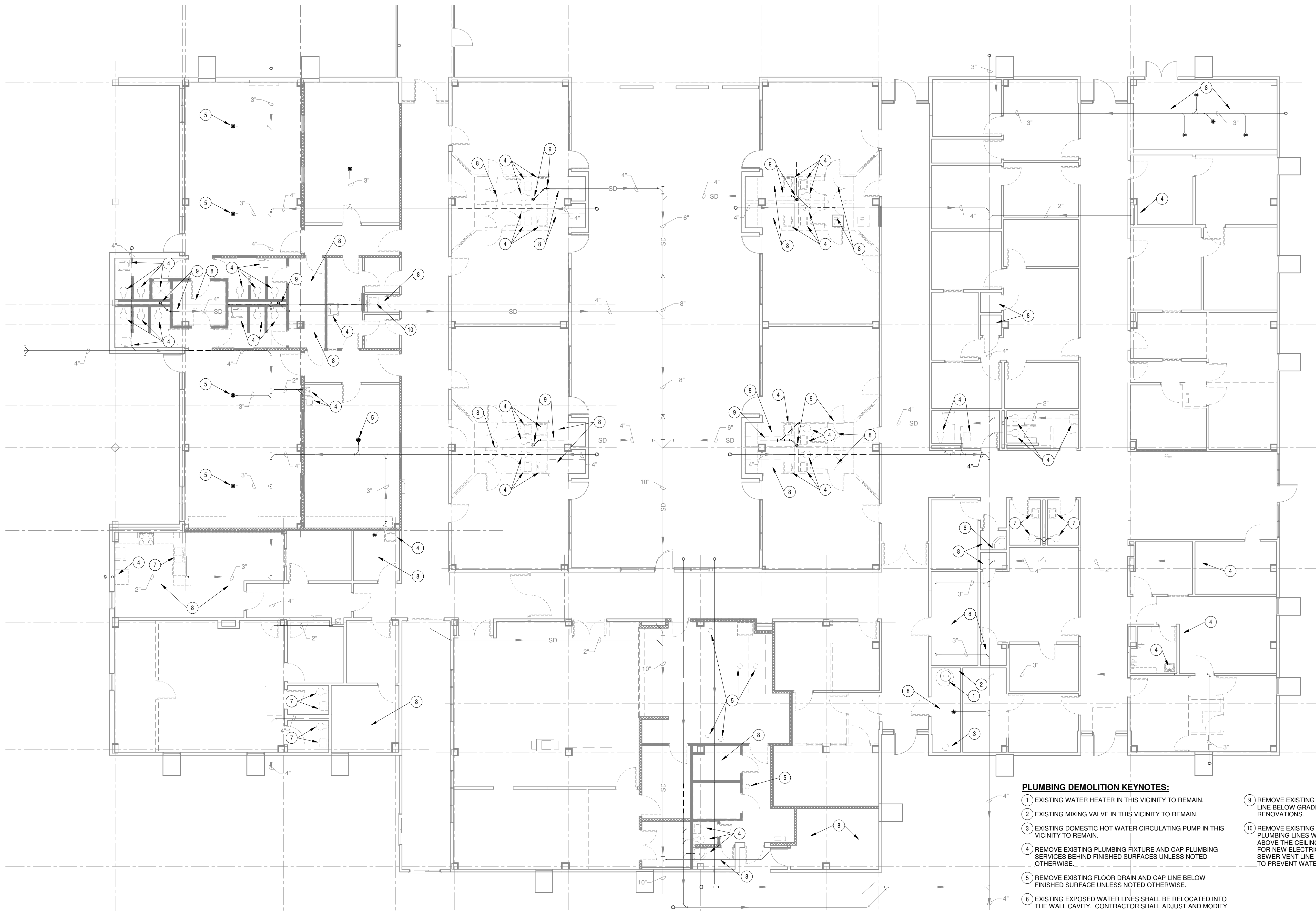


1 Plumbing Site Plan
1" = 20'-0" Refer to Architectural Drawings for All Dimensions

1304 BERTRAND DRIVE SUITE F7
LAFAYETTE, LOUISIANA 70506
(337) 234-7474 • FAX (337) 234-7774

Mechanical Contact: Hogan Guidry
hogan@meconsulting.com
Electrical Contact: David Carnali
david@meconsulting.com

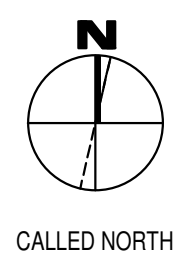
CONSULTING PROJECT No.: 21198.00



1 Plumbing Demolition Plan
 1/8" = 1'-0" Refer to Architectural Drawings for All Dimensions

PLUMBING DEMOLITION KEYNOTES:

- 1 EXISTING WATER HEATER IN THIS VICINITY TO REMAIN.
- 2 EXISTING MIXING VALVE IN THIS VICINITY TO REMAIN.
- 3 EXISTING DOMESTIC HOT WATER CIRCULATING PUMP IN THIS VICINITY TO REMAIN.
- 4 REMOVE EXISTING PLUMBING FIXTURE AND CAP PLUMBING SERVICES BEHIND FINISHED SURFACES UNLESS NOTED OTHERWISE.
- 5 REMOVE EXISTING FLOOR DRAIN AND CAP LINE BELOW FINISHED SURFACE UNLESS NOTED OTHERWISE.
- 6 EXISTING EXPOSED WATER LINES SHALL BE RELOCATED INTO THE WALL CAVITY. CONTRACTOR SHALL ADJUST AND MODIFY PIPING AS REQUIRED AND MAKE FINAL CONNECTION TO EXISTING PLUMBING FIXTURE.
- 7 REMOVE EXISTING PLUMBING TO ACCOMMODATE FOR NEW PLUMBING FIXTURE IN THE SAME LOCATION. CONTRACTOR SHALL MODIFY AND / OR ADJUST EXISTING PLUMBING ROUGH-INS AS REQUIRED.
- 8 REMOVE EXISTING SPRINKLER HEAD AND ASSOCIATED PIPING, AND CAP LINE ADJACENT TO DOMESTIC WATER LINE TEE FITTING.
- 9 REMOVE EXISTING STORM DRAIN LEADER AND STORM DRAIN LINE BELOW GRADE TO ACCOMMODATE FOR NEW BUILDING RENOVATIONS.
- 10 REMOVE EXISTING PLUMBING FIXTURE AND ASSOCIATED PLUMBING LINES WITHIN THE WALL. CAP PLUMBING LINES ABOVE THE CEILING AND BELOW THE SLAB TO ACCOMMODATE FOR NEW ELECTRICAL PANEL IN THIS LOCATION. SANITARY SEWER VENT LINE SHALL BE CAPPED ON THE HORIZONTAL LINE TO PREVENT WATER FROM BEING TRAPPED.



CALLED NORTH

1304 BERTRAND DRIVE SUITE F7
 LAFAYETTE, LOUISIANA 70506
 (337) 234-7474 * FAX (337) 234-7774
 Mechanical Contact: Hogan Guidry
 hogan@meconconsulting.com
 Electrical Contact: David Carnall
 david@meconconsulting.com
 PROJECT No.: 21198.00

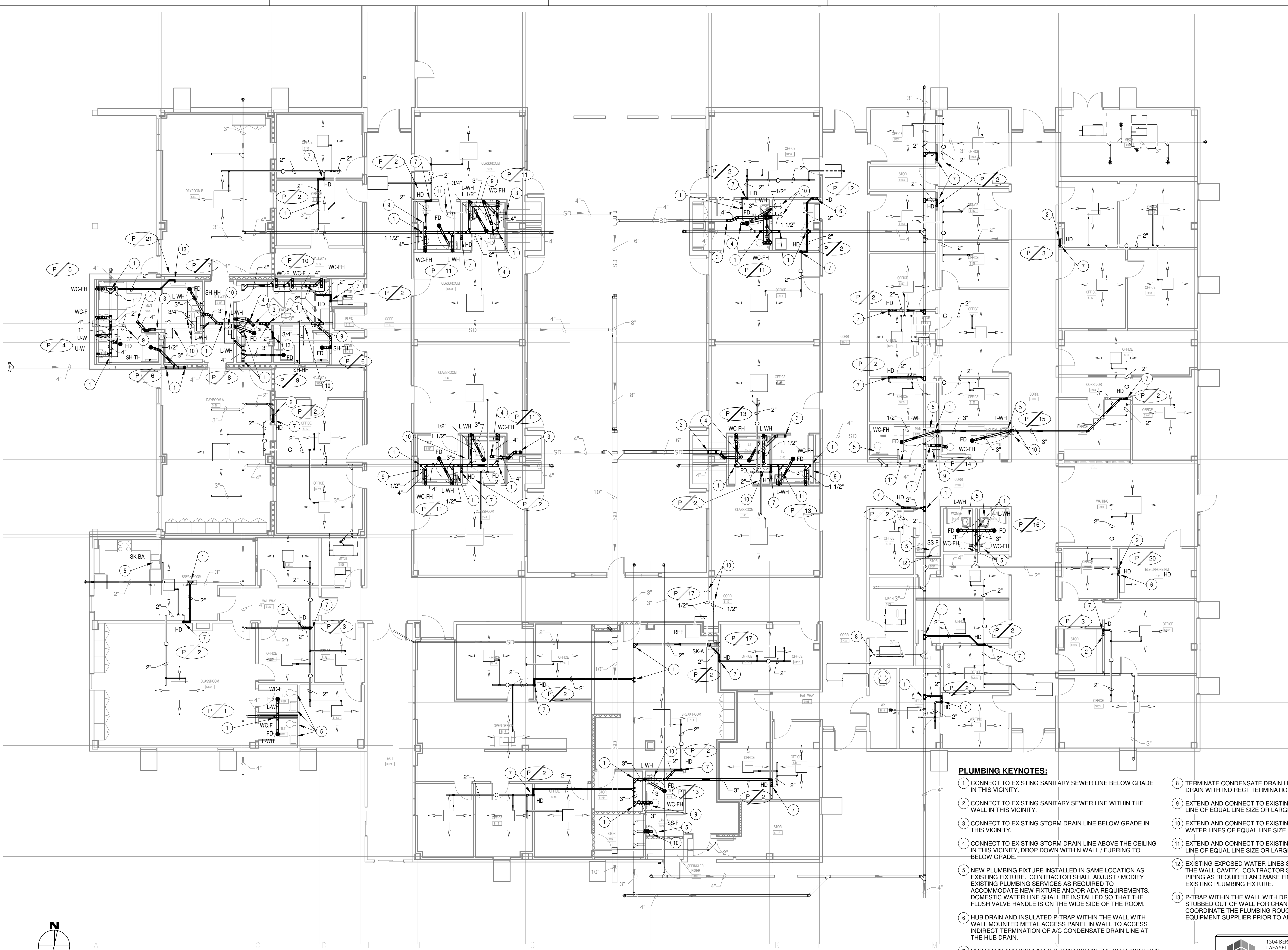
AAI
 Architectural Alliance Incorporated
 3877 Peachtree Dunwoody Rd.
 Suite 1000
 Atlanta, Georgia 30328
 TEL: (404) 886-7100
 FAX: (404) 886-1700
 J. RICH CLARK, A.L.A.
 RICHARD N. JONES, A.L.A.
 www.aaiarchitect.com

STATE OF TEXAS
 DUSTIN W. DUVAL
 117604
 LICENSED PROFESSIONAL ENGINEER
Dustin Duval
 06/10/2022

SMITH BUILDING RENOVATION
 SPINDLETOP CENTER
 655 S. 8TH STREET
 BEAUMONT, TX 77701

ISSUED FOR SCHEMATIC DESIGN	<input type="checkbox"/>
DATE:	
DESIGN DEVELOPMENT	<input type="checkbox"/>
DATE:	
BIDS & CONSTRUCTION	<input checked="" type="checkbox"/>
DATE: 6/13/22	
REVISION:	
DATE:	
REVISION:	
DATE:	
REVISION:	
DATE:	

DRAWINGS SHEET TITLE
PLUMBING DEMOLITION PLAN
 SHEET NUMBER
P200
 21032
 PROJECT NUMBER



PLUMBING KEYNOTES:

- 1 CONNECT TO EXISTING SANITARY SEWER LINE BELOW GRADE IN THIS VICINITY.
- 2 CONNECT TO EXISTING SANITARY SEWER LINE WITHIN THE WALL IN THIS VICINITY.
- 3 CONNECT TO EXISTING STORM DRAIN LINE BELOW GRADE IN THIS VICINITY.
- 4 CONNECT TO EXISTING STORM DRAIN LINE ABOVE THE CEILING IN THIS VICINITY, DROP DOWN WITHIN WALL / FURRING TO BELOW GRADE.
- 5 NEW PLUMBING FIXTURE INSTALLED IN SAME LOCATION AS EXISTING FIXTURE. CONTRACTOR SHALL ADJUST / MODIFY EXISTING PLUMBING SERVICES AS REQUIRED TO ACCOMMODATE NEW FIXTURE AND/OR ADA REQUIREMENTS. DOMESTIC WATER LINE SHALL BE INSTALLED SO THAT THE FLUSH VALVE HANDLE IS ON THE WIDE SIDE OF THE ROOM.
- 6 HUB DRAIN AND INSULATED P-TRAP WITHIN THE WALL WITH WALL MOUNTED METAL ACCESS PANEL IN WALL TO ACCESS INDIRECT TERMINATION OF A/C CONDENSATE DRAIN LINE AT THE HUB DRAIN.
- 7 HUB DRAIN AND INSULATED P-TRAP WITHIN THE WALL WITH DRAIN OPENING LOCATED ABOVE THE SUSPENDED CEILING TO ACCESS INDIRECT TERMINATION OF A/C CONDENSATE DRAIN LINE AT THE HUB DRAIN.
- 8 TERMINATE CONDENSATE DRAIN LINE INTO EXISTING HUB DRAIN WITH INDIRECT TERMINATION.
- 9 EXTEND AND CONNECT TO EXISTING DOMESTIC COLD WATER LINE OF EQUAL LINE SIZE OR LARGER.
- 10 EXTEND AND CONNECT TO EXISTING DOMESTIC COLD AND HOT WATER LINES OF EQUAL LINE SIZE OR LARGER.
- 11 EXTEND AND CONNECT TO EXISTING DOMESTIC HOT WATER LINE OF EQUAL LINE SIZE OR LARGER.
- 12 EXISTING EXPOSED WATER LINES SHALL BE RELOCATED INTO THE WALL CAVITY. CONTRACTOR SHALL ADJUST AND MODIFY PIPING AS REQUIRED AND MAKE FINAL CONNECTION TO EXISTING PLUMBING FIXTURE.
- 13 P-TRAP WITHIN THE WALL WITH DRAIN LINE CONNECTION STUBBED OUT OF WALL FOR CHANGING TABLE CONNECTION. COORDINATE THE PLUMBING ROUGH-IN HEIGHT WITH EQUIPMENT SUPPLIER PRIOR TO ANY ROUGH-INS.

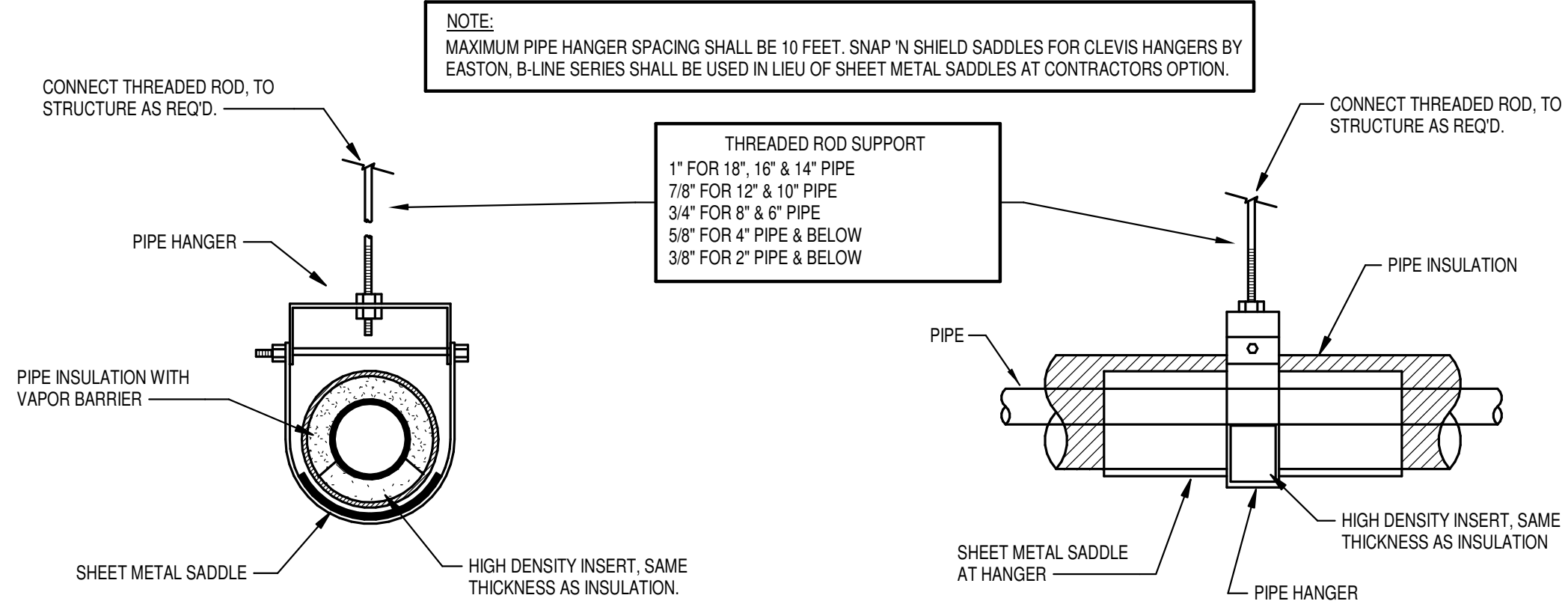
1 Plumbing Plan
1/8" = 1'-0" Refer to Architectural Drawings for All Dimensions

1304 BERTRAND DRIVE SUITE F7
LAFAYETTE, LOUISIANA 70506
(337) 234-7474 • FAX (337) 234-7774

Mechanical Contact: Hogan Guidry
hogan@meconconsulting.com
Electrical Contact: David Carnall
david@meconconsulting.com

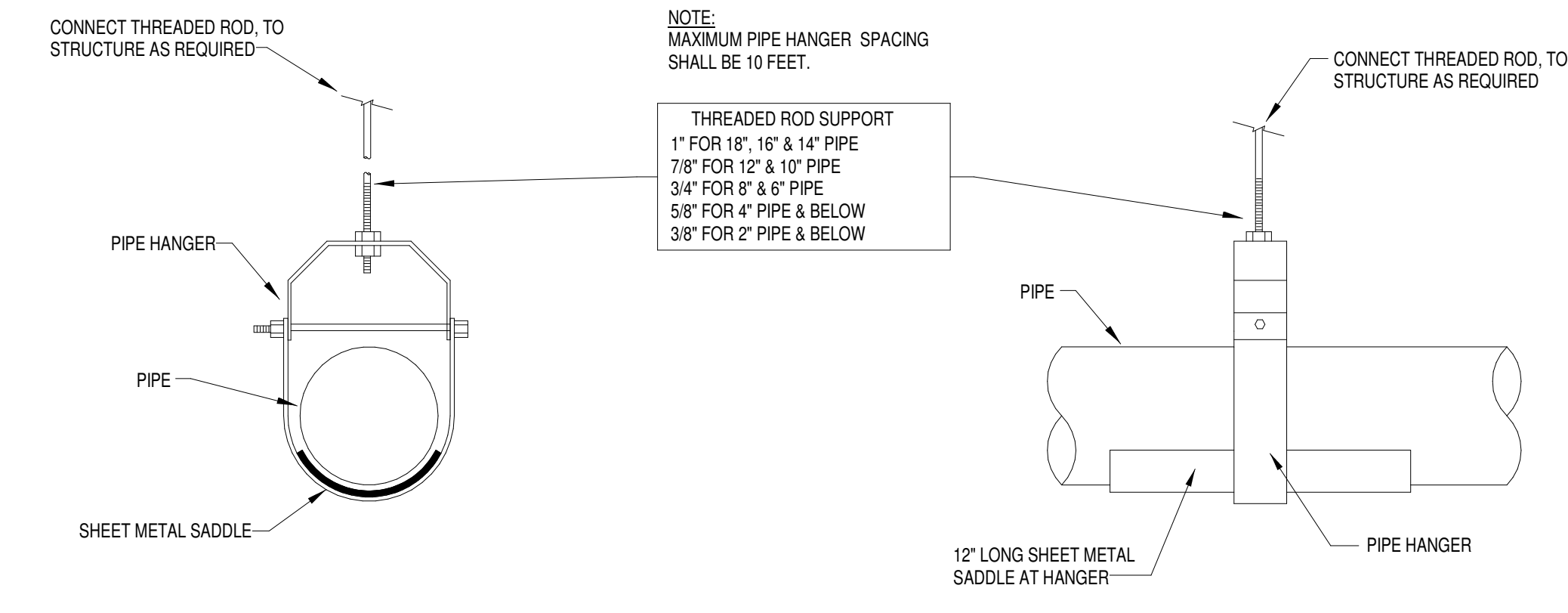
CONSULTING PROJECT No.: 21198.00

1 INSULATED PIPE HANGER DET.



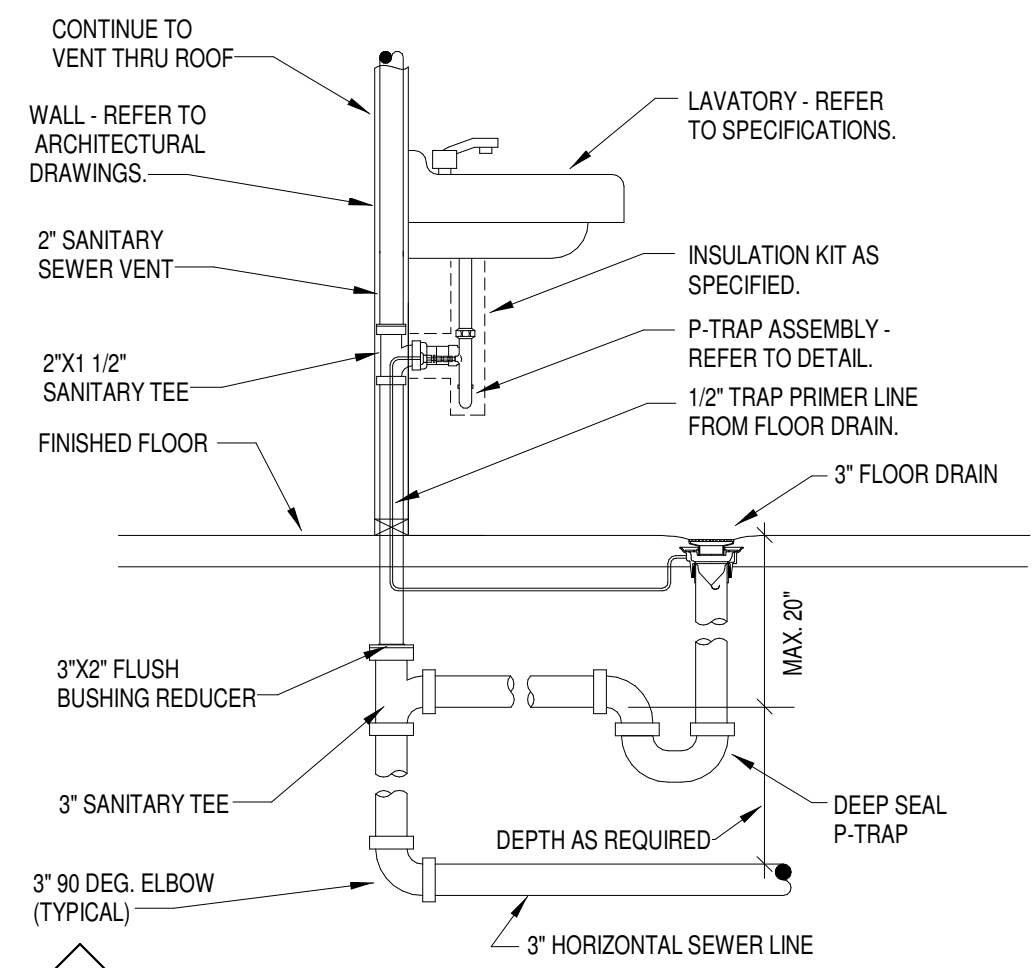
NO SCALE

2 NON-INSULATED PIPE HANGER DETAIL



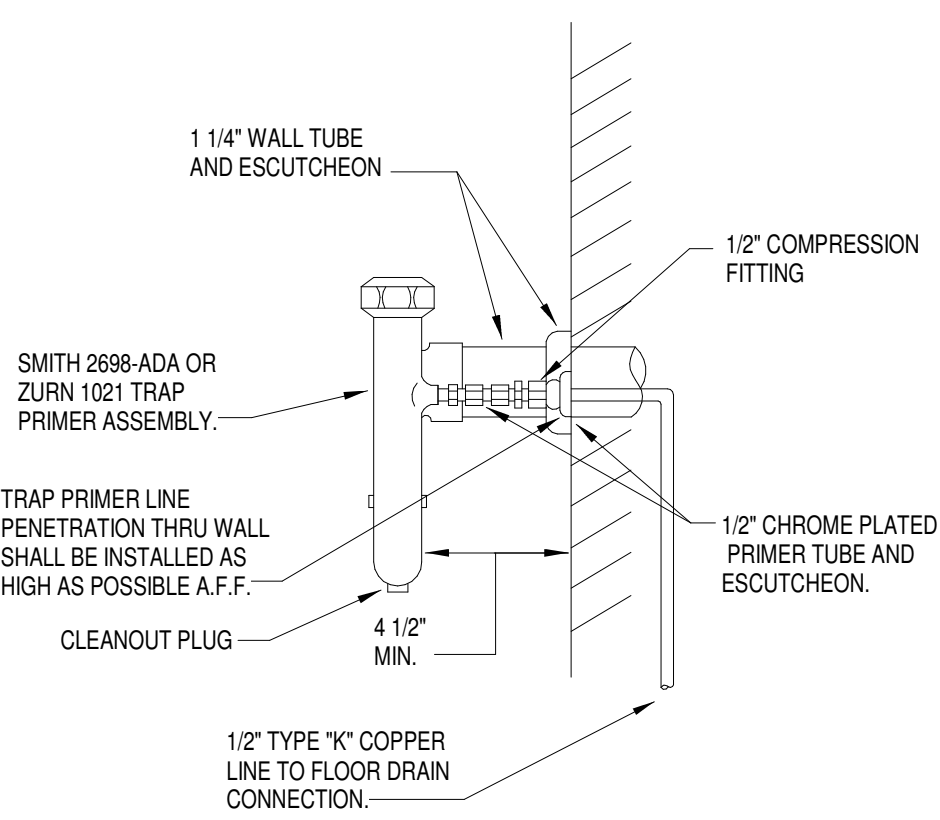
NO SCALE

3 FLOOR DRAIN TRAP PRIMER DETAIL



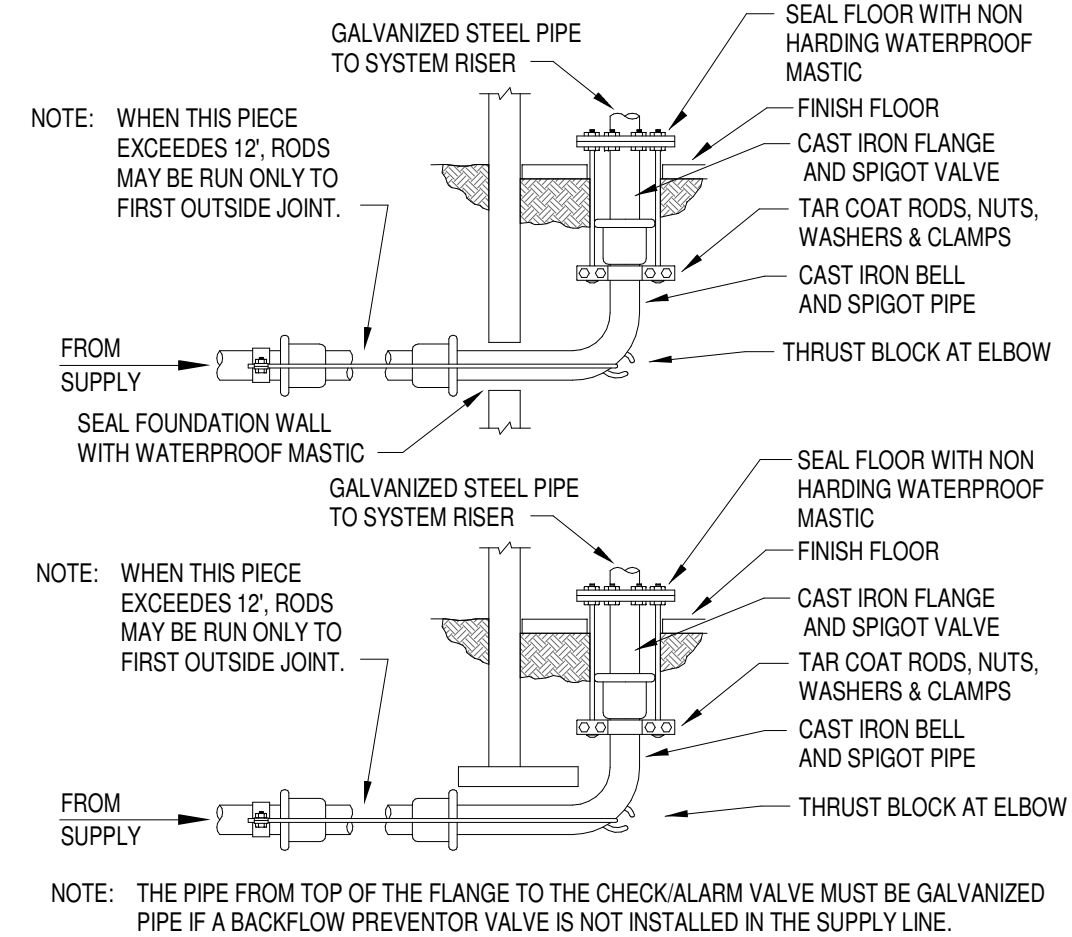
NO SCALE

4 TRAP PRIMER DETAIL



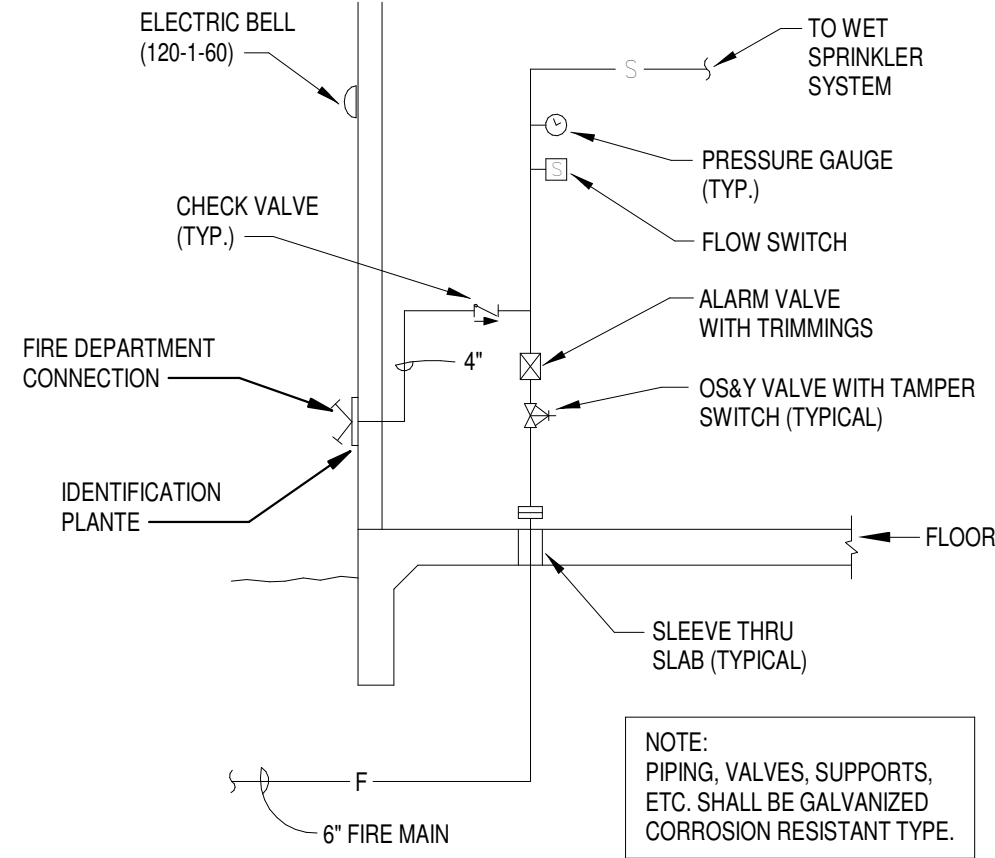
NO SCALE

5 FLANGE AND SPIGOT ASSEMBLIES



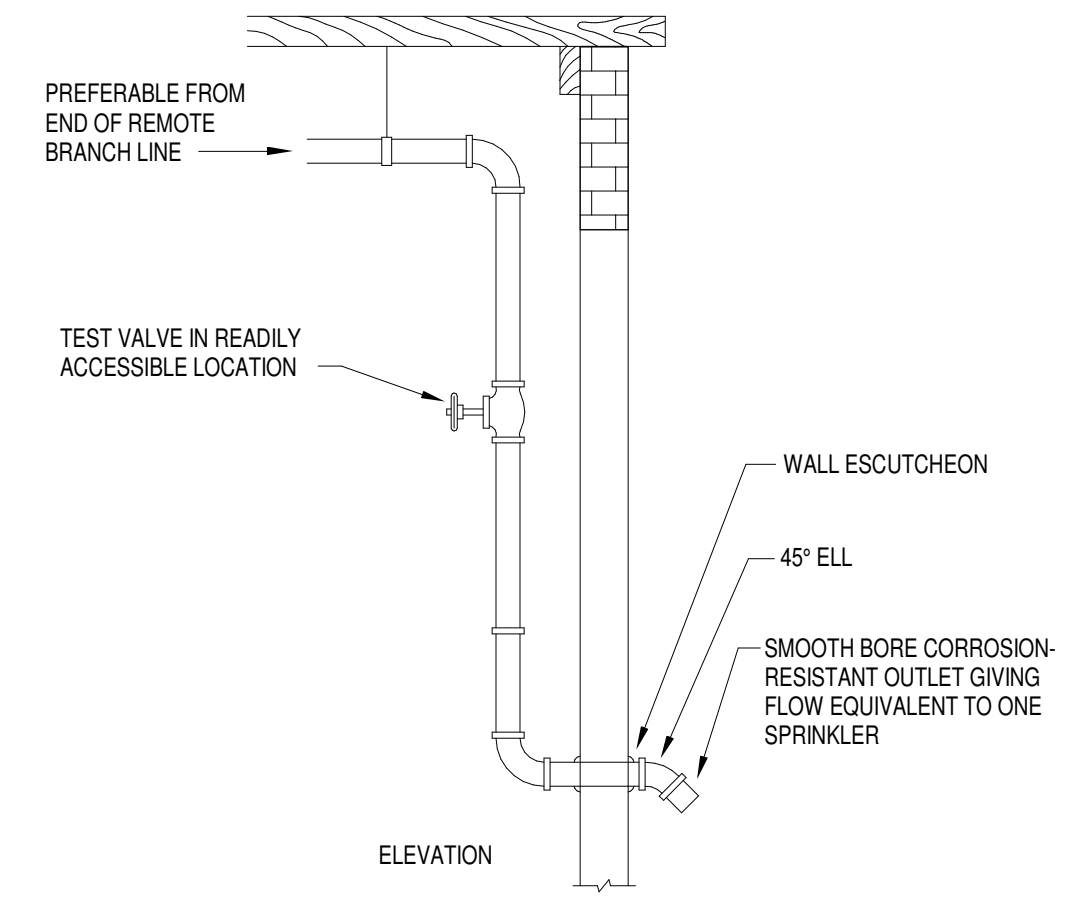
NO SCALE

6 SPRINKLER ENTRY DETAIL



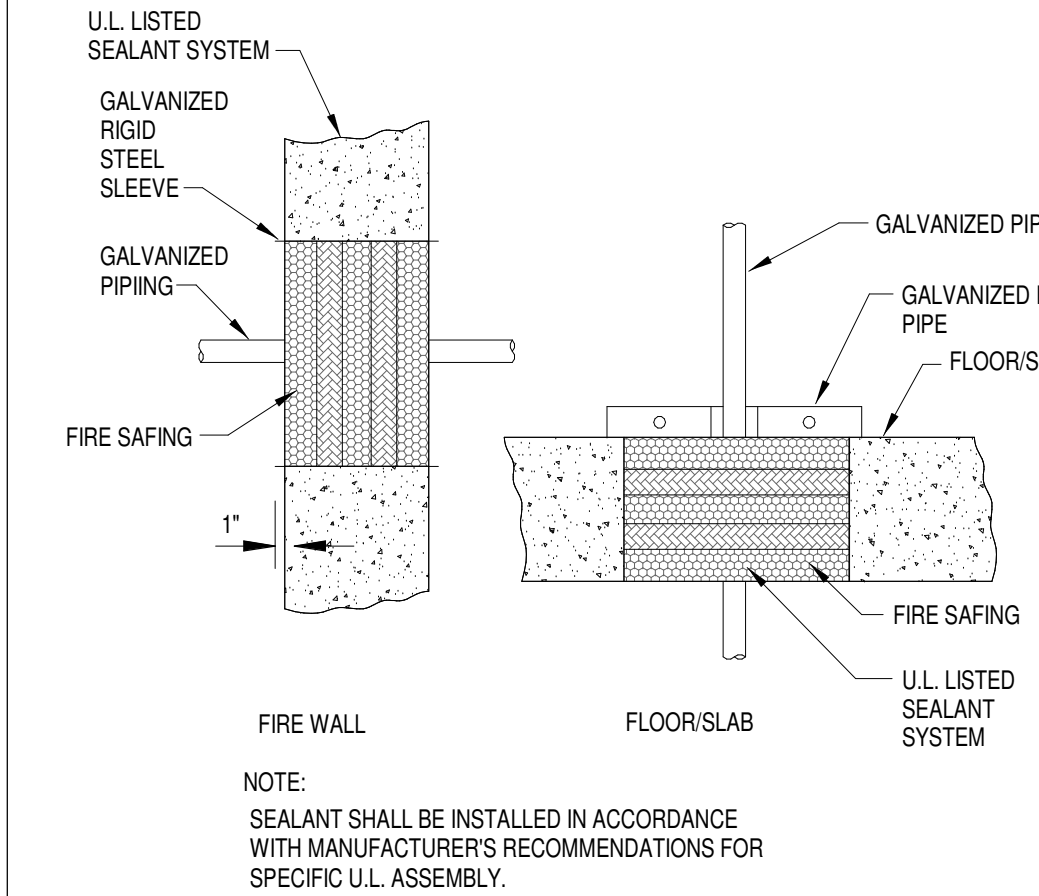
NO SCALE

7 SYSTEM TEST CONNECTION ON WET PIPE SYSTEM

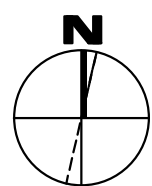


NO SCALE

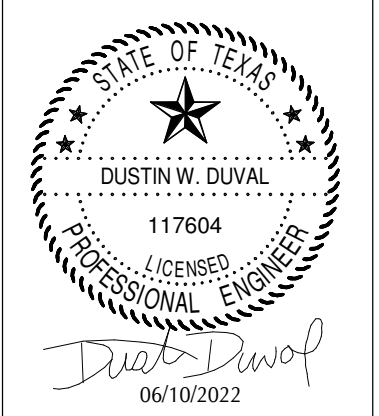
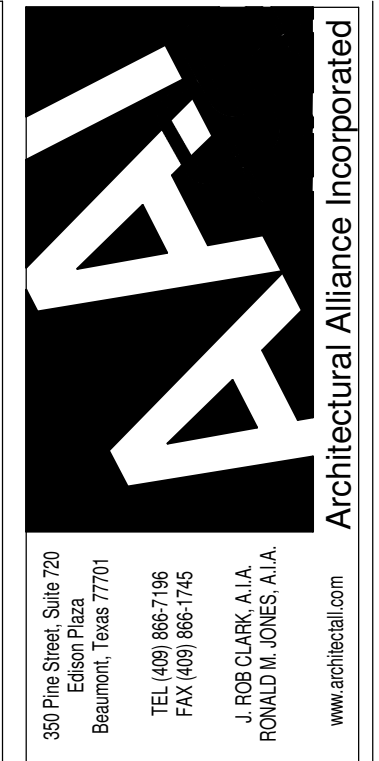
8 FIRE PENETRATION DETAIL



NO SCALE



CALLED NORTH



SMITH BUILDING RENOVATION
SPINDLETOP CENTER
655 S. 6TH STREET
BEAUMONT, TX 77701

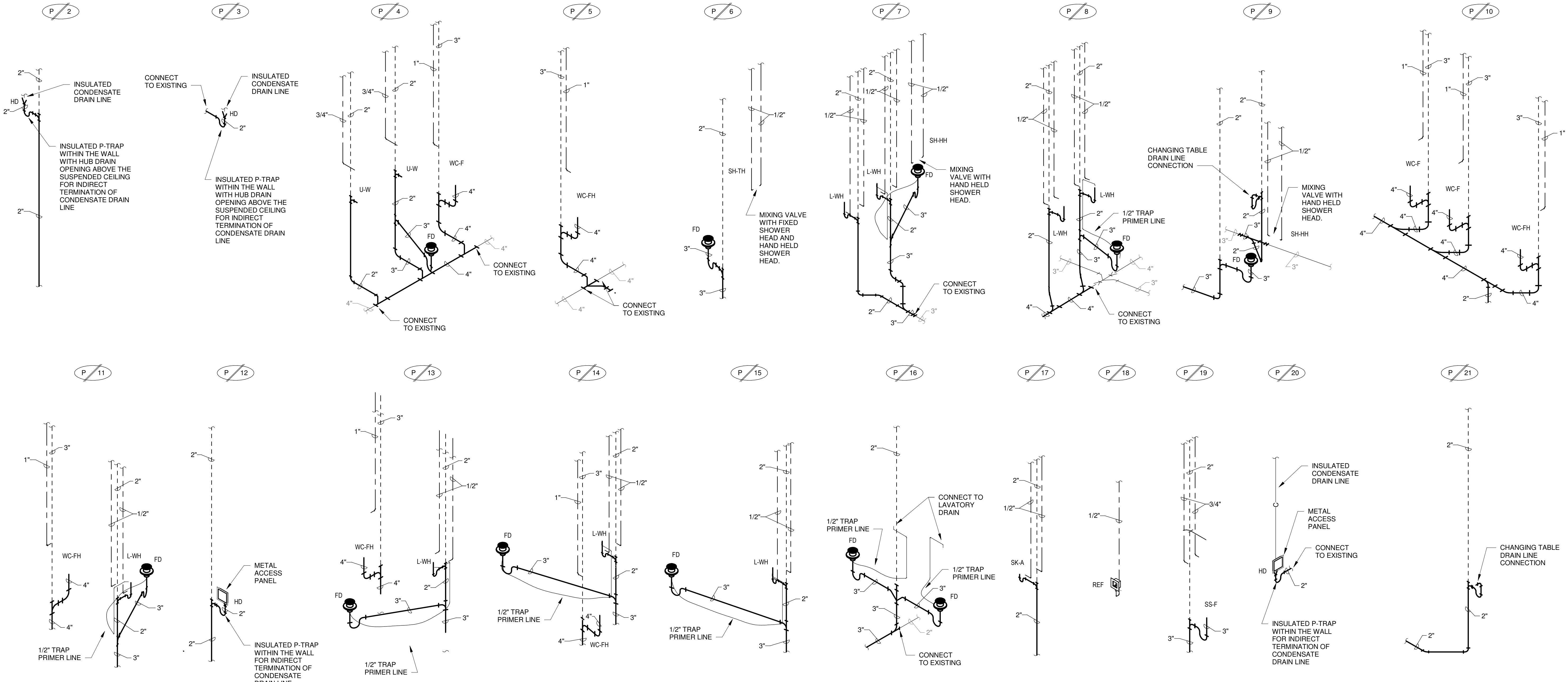
ISSUED FOR SCHEMATIC DESIGN	<input type="checkbox"/>
DATE:	
DESIGN DEVELOPMENT	<input type="checkbox"/>
DATE:	
BIDS & CONSTRUCTION	<input checked="" type="checkbox"/>
DATE: 6/13/22	
REVISION:	
DATE:	
REVISION:	
DATE:	
REVISION:	
DATE:	

DRAWINGS SHEET TITLE	PLUMBING & FIRE PROTECTION DETAILS
SHEET NUMBER	P400
PROJECT NUMBER	21032

1304 BERTRAND DRIVE SUITE F7
LAFAYETTE, LOUISIANA 70506
(337) 234-7474 • FAX (337) 234-7774
Mechanical Contact: Hogan Guidry
hogan@meconconsulting.com
Electrical Contact: David Carnali
david@meconconsulting.com
PROJECT No.: 21198.00

PLUMBING FIXTURE SCHEDULE


LABEL	FIXTURE TYPE	MANUFACTURER	PIPE CONNECTION				SPECIFICATION
			C.W.	H.W.	WASTE	VENT	
FD	FLOOR DRAIN	JOSAM SERIES 30000, WADE W-1100-A6-1, J. R. SMITH 2010A, MIFAB F1100-C, ZURN 415-BZ OR EQUIVALANT	-	-	3"	2"	BOTTOM OUTLET WITH DURA-COATED CAST IRON BODY, WITH CLAMPING COLLAR AND 6" DIAMETER NICKEL BRONZE STRAINER ADJUSTABLE VERTICALLY TO FLOOR LEVEL, WITH SQUARE PERFORATIONS AND VANDAL-PROOF SCREWS. PROVIDE TRAP PRIMER CONNECTION WHERE SHOWN ON PLANS. PROVIDE SURESEAL MODEL SS3000V (MIFAB MI-GARD-3) FLOOR DRAIN TRAP SEALER FOR 3" DIAMETER DRAIN (ASSE 1072) WHERE TRAP PRIMER LINE IS NOT SHOWN CONNECTING TO THE FLOOR DRAIN ON THE PLANS. COORDINATE FINAL ROUGH-IN ELEVATION WITH FINISHED FLOOR. REFER TO ARCHITECTURAL DRAWINGS FOR ADDITIONAL INFORMATION.
HD	HUB DRAIN	Provide SureSeal Model SS2009V	-	-	2"	2"	DRAIN TRAP SEALER FOR 2" DIAMETER CONDENSATE HUB DRAIN.
L-WH	LAVATORY	KOHLER K-1729, AMERICAN STANDARD 0124.131	1/2"	1/2"	2"	2"	WALL HUNG, 20" X 18", WHITE, VITREOUS CHINA, WALL MOUNTED LAVATORY WITH 4" FAUCET CENTERS. DELTA 22C101 (ZURN Z-81000-CP4, A.S. 6114.111.002) CAST BRASS BODY, CERAMIC DISC CARTRIDGE, SINGLE HANDLE FAUCET WITH MCGUIRE 155WC (KOHLER K-13885) OFFSET TAILPIECE WITH PERFORATED GRATE DRAIN; MCGUIRE 8872 (KOHLER K-8998) 1-1/4" CAST BRASS P-TRAP WITH CLEANOUT PLUG, 3/8" ANGLE SUPPLIES WITH STOPS, AND JOSAM, WADE 520 CONCEALED ARM FLOOR ANCHORED CARRIER. PROVIDE J.R. SMITH 2698-ADA PRIME-EZE, ZURN Z1021-ADA OR EQUAL WATER SAVER TRAP PRIMER WHERE INDICATED ON PLANS. TRUEBRO MODEL 103, (ZURN Z8946-3-NT) INSULATING KIT. INSTALL PER A.D.A. REQUIREMENTS. CAULK AROUND PERIMETER OF FIXTURE. PROVIDE LAWLER 570 (LEONARD 1791LF, WATTS LFUSG-B SERIES) THERMOSTATIC MIXING VALVE, 3/8" INLETS & OUTLET CONNECTIONS, TEMPERATURE CONTROL DEVICE THAT CONFORMS TO ASSE 1070.
REF	REFRIGERATOR	OATEY 38681, SPECIALITY PRODUCTS P4129	1/2"	-	-	-	WALL RECESSED BOX WITH CHROME PLATED 1/2"X1/4" ANGLE STOP WITH SUPPLY
SH-HH	SHOWER HAND HELD SHOWER HEAD	BRADLEY 1C-EF-B24, ZURN Z-7101-SS-MT-LH-HW, AMERICAN STANDARD 1662.221.002	1/2"	1/2"	-	-	CONCEALED IN-WALL MULTICHOICE UNIVERSAL PRESSURE BALANCE MIXING VALVE, HEAVY DUTY FORGED BRASS VALVE BODY, INTEGRAL SCREWDRIVER STOPS, VANDAL RESISTANT A.D.A. BLADE HANDLE, COLOR CODED NON-REMOVABLE MARKING ON ESCUTCHEON, HAND HELD SHOWER WITH 60" STAINLESS STEEL FLEXIBLE HOSE, 24" METAL SLIDE MOUNTING BAR FOR MOUNTING HAND HELD SHOWER AND ASSE VACUUM BREAKER. REFER TO ARCHITECTURAL SPECIFICATIONS FOR TILE FLOOR & WALLS, GRAB BARS, ACCESSORIES, ETC.
SH-TH	SHOWER	DELTA R10700-UNWS with T13H153 valve trim, BRADLEY 1C-EF-SF-B24-DV, ZURN Z-7101-SS-MT-LH-DV-2P-HW-S3, AMERICAN STANDARD 1662.223.002	1/2"	1/2"	3"	2"	CONCEALED IN-WALL MULTICHOICE UNIVERSAL PRESSURE BALANCE MIXING VALVE, HEAVY DUTY FORGED BRASS VALVE BODY, INTEGRAL SCREWDRIVER STOPS, WITH T13H153 VALVE TRIM, VANDAL RESISTANT A.D.A. BLADE HANDLE, COLOR CODED NON-REMOVABLE MARKING ON ESCUTCHEON, HAND HELD SHOWER WITH 70" VINYL HOSE, 24" SLIDE MOUNTING BAR FOR MOUNTING HAND HELD SHOWER AND ASSE VACUUM BREAKER, AND IN-WALL DIVERTER VALVE; FLOOR DRAIN "FD", 3" DRAIN OUTLET, NICKEL BRONZE FINISH GRID STRAINER. REFER TO ARCHITECTURAL SPECIFICATIONS FOR TILE FLOOR & WALLS, FOLDING SEAT, GRAB BARS, ACCESSORIES, ETC.
SK-A	SINK	ELKAY LR-1919, JUST SL-2019-A-GR	1/2"	1/2"	2"	2"	SELF RIMMING, 19" X 19" X 7.5", SINGLE COMPARTMENT, 18 GAUGE, TYPE 304 SELF RIMMING SINK WITH LK810G05T4 (ZURN 871B4-XL) 5" REACH GOOSENECK FAUCET WITH 4" WRIST BLADE HANDLES, LK-99 (JUST JB-99) BASKET STRAINER, MCGUIRE 8912 1-1/2" CAST BRASS P-TRAP WITH CLEANOUT PLUG AND 3/8" ANGLE SUPPLIES WITH STOPS. CAULK AROUND PERIMETER OF FIXTURE.
SK-BA	SINK	ELKAY LRAD-3319653, JUST DL-ADA-1933-A-GR	1/2"	1/2"	2"	2"	SELF RIMMING, 33" X 19" X 6.5", DOUBLE COMPARTMENT, 18 GAUGE, TYPE 304 SELF RIMMING SINK WITH LK810G05T4 (ZURN 871B4-XL, A.S. 6409.170.002) 8" REACH GOOSENECK FAUCET WITH 4" WRIST BLADE HANDLES, LK-99 (JUST JB-99) STAINLESS STEEL BASKET STRAINERS, MCGUIRE 8912 1-1/2" CAST BRASS P-TRAP WITH CLEANOUT PLUG, CONTINUOUS WASTE PIPING AND 3/8" ANGLE SUPPLIES WITH STOPS. CAULK AROUND PERIMETER OF FIXTURE.
SS-F	SERVICE SINK	FIAT MSB-2424, MUSTEE 63M	3/4"	3/4"	2"	2"	FLOOR MOUNTED, 24" X 24" X 10" WHITE MOLDED STONE MOP SERVICE BASIN WITH #1453-BB FLAT TYPE STAINLESS STEEL DRAIN, VINYL BUMPER GUARD, #830-AA (T&S BRASS B-0665-BSTR) MIXING FAUCET, #832-AA (T&S BRASS B-0654) HOSE AND STAINLESS STEEL HOSE BRACKET, #889-CC (T&S BRASS B-0653) STAINLESS STEEL MOP HANGER, #833-AA SILICONE SEALANT AND TWO (2) #MSG 2424 STAINLESS STEEL WALL GUARDS (SIDE AND BACK). CAULK AROUND PERIMETER OF FIXTURE.
U-W	URINAL	KOHLER K-4904-ET, AMERICAN STANDARD 6590.001	3/4"	-	2"	2"	FLOOR HUNG, WHITE, VITREOUS CHINA WALL HUNG WASHOUT URINAL WITH 3/4" TOP SPUD INLET. SLOAN 186-1 (ZURN AQUAFLUSH PLUS Z-6003-PL-WS1) FLUSH VALVE WITH A.D.A. COMPLIANT HANDLE ASSEMBLY, VANDAL RESISTANT STOP CAP, VACUUM BREAKER AND STOP. INSTALL PER A.D.A. REQUIREMENTS. DRAWINGS FOR MOUNTING HEIGHTS AND WALL THICKNESS. INSTALL PER A.D.A. REQUIREMENTS.
WC-F	WATER CLOSET	KOHLER K-96053, AMERICAN STANDARD 2234.001	1"	-	4"	3"	FLOOR MOUNTED, WHITE, VITREOUS CHINA, SIPHON JET, ELONGATED WATER CLOSET. K-4670-C (A.S. 5901.100, BEMIS 1955CT, BENEKE 523, CHURCH 295CT, CENTOCO 5005TSC0) SOLID PLASTIC, WHITE OPEN-FRONT TOILET SEAT LESS COVER, CHECK HINGE AND WITH STA-TITE COMMERCIAL FASTENING SYSTEM; K-4562 BOLT CAP. SLOAN 111 (ZURN AQUAFLUSH PLUS Z6000PL-WS1) FLUSH VALVE WITH A.D.A. COMPLIANT HANDLE ASSEMBLY, VANDAL RESISTANT STOP CAP, VACUUM BREAKER AND STOP. INSTALL PER A.D.A. REQUIREMENTS. FLUSH VALVE HANDLE TO BE ON WIDE SIDE OF STALL. INSTALL WAX SEAL BELOW FIXTURE. CAULK AROUND PERIMETER OF FIXTURE.
WC-FH	WATER CLOSET	KOHLER K-96057, AMERICAN STANDARD 3043.001	1"	-	4"	3"	FLOOR MOUNTED, WHITE, VITREOUS CHINA, SIPHON JET, ELONGATED WATER CLOSET. K-4670-C (A.S. 5901.100, BEMIS 1955CT, BENEKE 523, CHURCH 295CT, CENTOCO 5005TSC0) SOLID PLASTIC, WHITE OPEN-FRONT TOILET SEAT LESS COVER, CHECK HINGE AND WITH STA-TITE COMMERCIAL FASTENING SYSTEM; K-4562 BOLT CAP. SLOAN 111 (ZURN AQUAFLUSH PLUS Z6000PL-WS1) FLUSH VALVE WITH A.D.A. COMPLIANT HANDLE ASSEMBLY, VANDAL RESISTANT STOP CAP, VACUUM BREAKER AND STOP. INSTALL PER A.D.A. REQUIREMENTS. FLUSH VALVE HANDLE TO BE ON WIDE SIDE OF STALL. INSTALL WAX SEAL BELOW FIXTURE. CAULK AROUND PERIMETER OF FIXTURE.



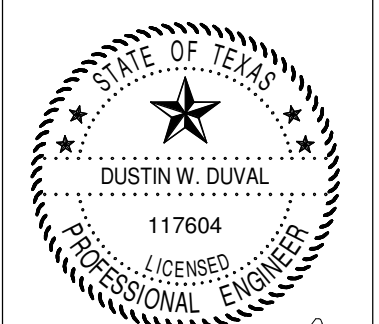
- NOTES:**
1. PLUMBING CONTRACTOR SHALL COMBINE AND EXTEND VENT LINES AS REQUIRED TO EXISTING VENT LINES AND V.T.R. VENT THRU ROOF SHALL MAINTAIN A MINIMUM OF 10'-0" FROM OUTSIDE AIR INTAKES.
 2. CONTRACTOR SHALL SEAL ALL PIPE PENETRATIONS THRU RATED WALLS WITH FIRE RATED SEALANT SYSTEMS PER MANUFACTURER'S RECOMMENDATIONS FOR SPECIFIC U.L. ASSEMBLY.
 3. WATER HAMMER ARRESTER(S) SHALL BE INSTALLED ON PIPING SYSTEMS AND AT QUICK-CLOSING VALVES AS PER MANUFACTURER'S RECOMMENDATIONS.
 4. ALL FLOOR DRAINS (FD & FD-R) AND HUB DRAIN (HD) SHALL BE COMPLETE WITH TRAP GUARDS PER SPECIFICATIONS.



 1304 BERTRAND DRIVE SUITE F7
 LAFAYETTE, LOUISIANA 70506
 (337) 234-7474 • FAX (337) 234-7774
 Mechanical Contact: Hogan Guidry
 hogan@meconconsulting.com
 Electrical Contact: David Carnali
 david@meconconsulting.com
 CONSULTING PROJECT No.: 21198.00



 Architectural Alliance Incorporated
 359 Peach Street, Suite 720
 6400 Plaza
 Beaumont, Texas 77701
 TEL: (409) 884-7146
 FAX: (409) 884-1746
 J. REBECCA A. J.A.
 REG. IN TEXAS, N.C.
 www.aiaalliance.com



 DUSTIN W. DUAL
 117604
 LICENSED PROFESSIONAL ENGINEER
 06/10/2022

SMITH BUILDING RENOVATION
 SPINDLETOP CENTER
 655 S. 6TH Street
 BEAUMONT, TX 77701

ISSUED FOR SCHEMATIC DESIGN

DESIGN DEVELOPMENT

BIDS & CONSTRUCTION

DATE: 6/13/22

REVISION: DATE: _____

REVISION: DATE: _____

REVISION: DATE: _____

PLUMBING SCHEDULES & PLUMBING RISER DIAGRAMS
 SHEET NUMBER
P500
 21032
 PROJECT NUMBER