

DEFINE

PLUMBING & SPRINKLER ABBREVIATIONS

AD	ACCESS DOOR	HP	HORSE POWER
ADA	AMERICANS WITH DISABILITIES ACT	HS	HOSE STATION
AFF	ABOVE FINISHED FLOOR	HW	HAND WASH
AV	ACID VENT	ICE	ICE MACHINE WATER CONNECTION
AW	ACID WASTE	L	LAVATORY
BOP	BOTTOM OF PIPE	LS	LIFT STATION (SANITARY SEWER)
BP	BACKFLOW PREVENTER	MH	MANHOLE
BT	BATH TUB	MV	MIXING VALVE
BTUH	BRITISH THERMAL UNITS PER HOUR	N.O.	NORMALLY OPEN
C	CONDENSATE DRAIN LINE	N.C.	NORMALLY CLOSED
CA	COMPRESSED AIR LINE	NTS	NOT TO SCALE
CB	CATCH BASIN	P	PUMP
CFM	CUBIC FEET PER MINUTE	PIV	POST INDICATING VALVE
CI	CAST IRON	PRV	PRESSURE REDUCING VALVE
CO	CLEANOUT	PSIG	POUNDS PER SQUARE INCH GAGE
CSS	CLINIC SERVICE SINK	PT	PLASTER TRAP
CP	CIRCULATING WATER PUMP	REF	REFRIGERATOR WATER CONNECTION BOX
D	DRAIN LINE	RD	ROOF DRAIN
DF	DRINKING FOUNTAIN	RPM	REVOLUTIONS PER MINUTE
DCW	DOMESTIC COLD WATER LINE	SAN	SANITARY SEWER
DHR	DOMESTIC HOT WATER RETURN LINE	SD	STORM DRAIN
DHW	DOMESTIC HOT WATER LINE	SF	SQUARE FOOT
DS	DRENCH SHOWER	SH	SHOWER
DSEW	DRENCH SHOWER WITH EYE WASH	SK	SINK
DT	DILUTION TRAP	SMH	SEWER MANHOLE
DW	DISHWASHER	SS	SERVICE SINK
ET	EXPANSION TANK	STP	SEWER TREATMENT PLANT
EW	EYE WASH	TD	TRENCH DRAIN
EWC	ELECTRIC WATER COOLER	TP	TRAP PRIMER
EWH	ELECTRIC WATER HEATER	TYP	TYPICAL
FCO	FLOOR CLEANOUT	U	URINAL
FD	FLOOR DRAIN	UNO	UNLESS NOTED OTHERWISE
FDC	FIRE DEPARTMENT CONNECTION	V	VENT
FFE	FINISHED FLOOR ELEVATION	VAC	VACUUM
FH	FIRE HYDRANT	VB	VACUUM BREAKER
FS	FLOOR SINK	VTR	VENT THRU ROOF
GD	GARBAGE DISPOSAL	W	WASHER WATER/DRAIN CONNECTION LINE
GPH	GALLONS PER HOUR	WC	WATER CLOSET
GPM	GALLONS PER MINUTE	WCO	WALL CLEANOUT
GT	GREASE TRAP	WF	WASH FOUNTAIN
GW	GAS FIRED WATER HEATER	WG	WATER GAGE
HB	HOSE BIB	WP	WHIRL POOL
HD	HUB DRAIN	ZVB	ZONE VALVE BOX (MEDICAL GAS)

DESIGN

PLUMBING & SPRINKLER LEGEND

PIPING				VALVES			
EXISTING	DEMO	NEW	DESCRIPTION	EXISTING	DEMO	NEW	DESCRIPTION
---	--DCW--	---	DOMESTIC COLD WATER LINE	---	---	---	BALL VALVE (SHUT-OFF)
---	--DHW--	---	DOMESTIC HOT WATER LINE (110°)	---	---	---	BALL VALVE (SHUT-OFF)
---	--DHR--	---	DOMESTIC HOT WATER RETURN LINE	---	---	---	SHUT-OFF VALVE IN CAST IRON VALVE BOX
-(X°F)-	--(X°F)-	-(X°F)-	DOMESTIC HOT WATER LINE (X=TEMP.)	---	---	---	CALIBRATED BALANCING VALVE
---	---	---	SANITARY SEWER LINE (SAN)	---	---	---	CHECK VALVE
---	---	---	SANITARY SEWER VENT LINE	---	---	---	OS&Y VALVE
---SD---	---SD---	---SD---	STORM DRAIN LINE (PRIMARY)	---	---	---	GAS COCK
---OSD---	---OSD---	---OSD---	OVERFLOW STORM DRAIN LINE (SECONDARY)	---	---	---	BUTTERFLY VALVE
---C---	---C---	---C---	CONDENSATE DRAIN LINE	---	---	---	VALVE IN RISE
---GW---	---GW---	---GW---	GREASE WASTE DRAIN LINE	---	---	---	2-WAY CONTROL VALVE
---AW---	---AW---	---AW---	ACID WASTE DRAIN LINE	---	---	---	3-WAY CONTROL VALVE
---	---	---	FIRE MAIN WATER LINE	EQUIPMENT			
---	---	---	SPRINKLER LINE	EXISTING	DEMO	NEW	DESCRIPTION
---	---	---	NATURAL GAS LINE	□	□	□	PLUMBING FIXTURES
---	---	---	PROPANE GAS LINE	□	□	□	METER
---	---	---	COMPRESSED AIR LINE	⊙	⊙	⊙	REGULATOR
---	---	---	REVERSE OSMOSIS PURE WATER SUPPLY LINE	SYMBOL (MISC.)			
---	---	---	REVERSE OSMOSIS PURE WATER RETURN LINE	EXISTING	DEMO	NEW	DESCRIPTION
---	---	---	DIONIZED PURE WATER SUPPLY LINE	⊙	⊙	⊙	CONNECT TO EXISTING SERVICES
---	---	---	OXYGEN LINE (MEDICAL)				
---	---	---	VACUUM LINE (MEDICAL)				
---	---	---	NITROGEN LINE (MEDICAL)				
---	---	---	NITROUS OXIDE (MEDICAL)				
---	---	---	AIR (MEDICAL)				
---	---	---	WASTE ANESTHETIC GAS DISPOSAL				
PIPE FITTING							
EXISTING	DEMO	NEW	DESCRIPTION				
---	---	---	CAPPED PIPE				
---	---	---	PIPE RISE				
---	---	---	PIPE DROP				
---	---	---	UNION				
---	---	---	DIRECTION OF FLOW				
---	---	---	PIPE SUPPORT OR BRACING				
---	---	---	PIPE CONNECTION (TOP)				
---	---	---	PIPE CONNECTION (BOTTOM)				
---	---	---	PIPE CONNECTION (SIDE)				
---	---	---	CAPPED OUTLET TOP				
---	---	---	PIPE REDUCER AND/OR INCREASER				

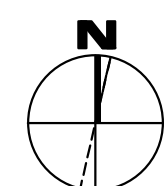
NOTES: 1. EXISTING ITEMS ON DEMO PLANS ARE "EXISTING TO REMAIN" UNLESS NOTED "EXISTING TO BE RELOCATED."
 2. ITEMS ON NEW CONSTRUCTION PLANS ARE NEW UNLESS NOTED "RELOCATED FROM PREVIOUS LOCATION". REFER TO SCHEDULES AND SPECIFICATIONS FOR PLUMBING FIXTURES.
 3. NOT ALL ITEMS SHOWN ON THIS LIST MAY BE APPLICABLE TO THIS PROJECT.

DELIVER

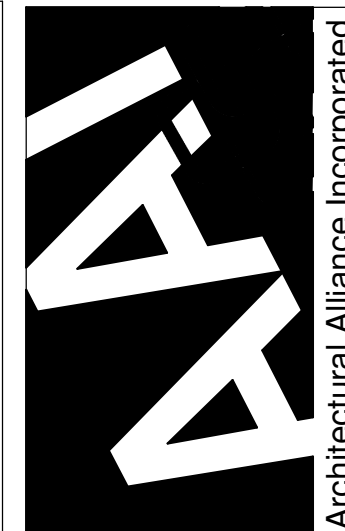
PLUMBING & SPRINKLER GENERAL NOTES

- CONTRACTOR SHALL VISIT THE SITE AND DETERMINE THE EXTENT OF DEMOLITION WORK AND NEW WORK NEEDED FOR THIS PROJECT, PRIOR TO SUBMITTING BID.
- CONTRACTOR SHALL BECOME FAMILIAR WITH THE PROJECT SCOPE, CONSTRAINTS, UTILITY CONNECTIONS, AND BUILDING SERVICES, PRIOR TO SUBMITTING BID.
- CONTRACTOR SHALL GIVE FIRST RIGHT TO REFUSAL OF SALVAGE TO THE OWNER. IF THE OWNER ELECTS TO NOT KEEP SALVAGE, CONTRACTOR SHALL REMOVE SALVAGE BY LAWFUL MEANS.
- DRAWINGS ARE SCHEMATIC AND DIAGRAMMATIC IN NATURE. DRAWINGS SHALL NOT BE SCALED. COORDINATE ROUTING OF SERVICES WITH SITE CONDITIONS AND WITH WORK OF OTHER TRADES.
- FIELD VERIFY DIMENSIONS PRIOR TO ORDERING, FABRICATING, AND ERECTION OF MATERIAL AND/OR EQUIPMENT. NOTIFY THE ENGINEER OF DISCREPANCIES IN A TIMELY MANNER.
- VERIFY CLEARANCE REQUIREMENTS AND ROUTING OF PIPING PRIOR TO FABRICATION, AS MINOR MODIFICATIONS SUCH AS PIPING RISES AND DROP MAY BE REQUIRED DUE TO FIELD CONDITIONS. MAKE MINOR MODIFICATIONS TO THE BUILDING, PIPING, SPRINKLER, DUCTWORK, ELECTRICAL, ETC. AS SHOWN ON THE DRAWINGS OR REQUIRED TO COMPLETE THE INSTALLATION OF A COMPLETED WORKABLE SYSTEM.
- MAINTAIN WEATHER-TIGHT BARRIERS TO PREVENT DAMAGE FROM THE ELEMENTS DURING DEMOLITION AND NEW CONSTRUCTION PERIOD.
- SEAL PENETRATIONS THROUGH THE BUILDING ENVELOPE.
- PENETRATIONS THROUGH RATED WALLS, FLOORS, PARTITIONS AND ASSEMBLIES SHALL BE INSTALLED AND FIRESAFED TO MEET UL FIRE RESISTANCE LISTING AND NFPA REQUIREMENTS FOR THE PENETRATION.
- COORDINATE DEVICES REQUIRING ACCESS PANELS WITH THE ARCHITECT AND OTHER TRADES.
- MAINTAIN MINIMUM CLEARANCE 10'-0" BETWEEN OUTSIDE INTAKES AND EXHAUST OUTLETS AND PLUMBING VENTS.
- COORDINATE FINAL LOCATIONS AND ELEVATIONS WITH THE ARCHITECT PRIOR TO INSTALLATION.
- COORDINATE FINAL FINISH COLORS OF MATERIALS, DEVICES, AND/OR EQUIPMENT WITH THE ARCHITECT PRIOR TO ORDERING, FABRICATION AND INSTALLATION.
- SCHEDULE UTILITY SERVICES SHUTDOWNS WITH OWNER AND ARCHITECT. MINIMIZE DISRUPTIONS AND DOWNTIME TO THE OWNER.
- INSTALL DEVICES AND EQUIPMENT TO MEET ADA REQUIREMENTS.
- ROUTE PIPING CONCEALED IN INTERSTITIAL SPACE UNLESS NOTED OTHERWISE.
- DOCUMENT LOCATIONS OF DEVICES, PIPING, AND EQUIPMENT ON "AS-BUILT" RECORD DRAWINGS AS PER THE SPECIFICATIONS.
- PAY FOR SERVICE, DEPOSITS, INSPECTION, AND CONNECTION FEES REQUIRED FOR A COMPLETE INSTALLATION. COORDINATE WITH THE UTILITY SERVICE PROVIDER FOR THE REQUIREMENTS NEEDED FOR THIS PROJECT.
- WORK SHOWN IN THE DRAWINGS SHALL COMPLY WITH APPLICABLE NATIONAL, STATE, AND LOCAL ORDINANCES AND CODES.
- ALL EXPOSED DOMESTIC COLD AND HOT WATER PIPING WITHIN THE BUILDING SHALL HAVE FIELD INSTALL PVC JACKET.
- WATER HAMMER ARRESTER(S) SHALL BE INSTALLED ON PIPING SYSTEMS AND AT QUICK-CLOSING VALVES AS PER MANUFACTURER'S RECOMMENDATIONS.

meconsulting.com



CALLED NORTH



Architectural Alliance Incorporated

350 Pine Street, Suite 720
 Beaumont, Texas 77701
 TEL: (409) 886-7146
 FAX: (409) 886-1745
 J. RISE CLARK, A.L.A.
 RONALD N. JONES, A.L.A.
 www.aarchitect.com

PRELIMINARY

NOT FOR CONSTRUCTION, BIDDING, OR AS A BASIS FOR ISSUING A PERMIT. DOCUMENTS PREPARED BY DUSTIN DUVAL, TX# 117604 WITH M&E CONSULTING, INC.

SMITH BUILDING RENOVATION

SPINDLETOP CENTER

BEAUMONT, TX 77701

655 S. 8TH Street

ISSUED FOR SCHEMATIC DESIGN
 DATE: _____
 DESIGN DEVELOPMENT
 DATE: 04-18-22
 BIDS & CONSTRUCTION
 DATE: _____
 REVISION: _____
 DATE: _____
 REVISION: _____
 DATE: _____
 REVISION: _____
 DATE: _____

DRAWINGS SHEET TITLE

PLUMBING LEGEND & GENERAL NOTES

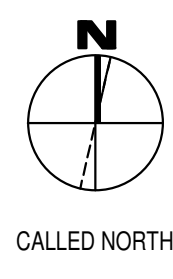
SHEET NUMBER
P000
 21032
 PROJECT NUMBER

1304 BERTRAND DRIVE SUITE F7
 LAFAYETTE, LOUISIANA 70506
 (337) 234-7474 • FAX (337) 234-7774
 Mechanical Contact: Hogan Guidry
 hogan@meconsulting.com
 Electrical Contact: David Carroll
 david@meconsulting.com
 PROJECT No.: 21198.00

REMOVE ALL PLUMBING FIXTURES. CAP EXISTING PIPING IN PREPARATION FOR NEW WORK.



1 Plumbing Plan - Demolition
1/8" = 1'-0" Refer to Architectural Drawings for All Dimensions



1304 BERTRAND DRIVE SUITE F7
LAFAYETTE, LOUISIANA 70506
(337) 234-7474 • FAX (337) 234-7774

Mechanical Contact: Hogan Guidry
hogan@meconsulting.com
Electrical Contact: David Carroll
david@meconsulting.com

CONSULTING PROJECT No.: 21198.00

AAI
Architectural Alliance Incorporated

3575 Pine Street, Suite 720
Beaumont, Texas 77701
TEL: (409) 886-1746
FAX: (409) 886-1745
J. RICE CLARK, A.I.A.
RONALD N. JONES, A.I.A.
www.aaiarchitect.com

PRELIMINARY
NOT FOR CONSTRUCTION, BIDDING, OR AS A BASIS FOR ISSUING A PERMIT. DOCUMENTS PREPARED BY DUSTIN DUVAL TX# 117604 WITH M&E CONSULTING, INC.

SMITH BUILDING RENOVATION
SPINDLETOP CENTER
655 S. 8TH STREET
BEAUMONT, TX 77701

ISSUED FOR SCHEMATIC DESIGN	<input type="checkbox"/>
DATE:	
DESIGN DEVELOPMENT	<input checked="" type="checkbox"/>
DATE: 04-18-22	
BIDS & CONSTRUCTION	<input type="checkbox"/>
DATE:	
REVISION:	
DATE:	
REVISION:	
DATE:	
REVISION:	
DATE:	

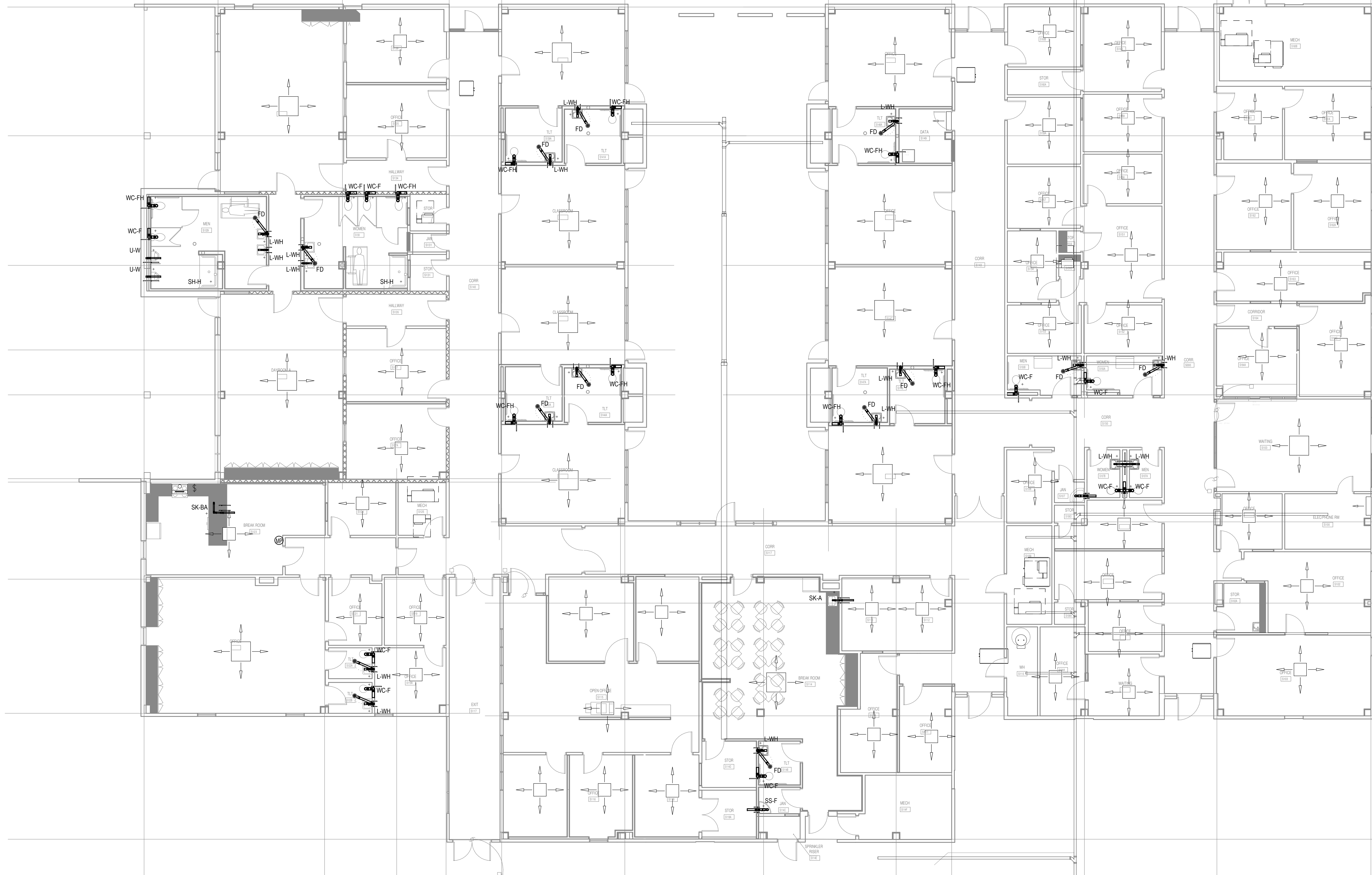
DRAWINGS SHEET TITLE
PLUMBING DEMOLITION PLAN

SHEET NUMBER
P100
21032
PROJECT NUMBER

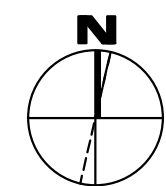
HUB DRAINS FOR VRF INDOOR UNITS TO BE LOCATED TO MINIMIZE TRENCHING FROM HUB DRAIN TO NEAREST SEWER LINE FOR CONDENSATE REMOVAL.

ALL NEW PLUMBING FIXTURES. CONTRACTOR TO TRENCH AND PATCH CONCRETE AS NEEDED TO EXTEND TO NEW FIXTURE LOCATIONS. CONTRACTOR CAN REUSE ANY WATER, VENT, OR SEWER PIPING WHERE APPLICABLE IF THE EXISTING PIPING MEETS OR EXCEEDS THE SIZES INDICATED ON THE PLANS.

ALL RESTROOMS DO NOT CURRENTLY HAVE FLOOR DRAINS. NEW FLOOR DRAINS WILL BE ADDED.



1 Plumbing Plan
1/8" = 1'-0" Refer to Architectural Drawings for All Dimensions



CALLED NORTH

1304 BERTRAND DRIVE SUITE F7
LAFAYETTE, LOUISIANA 70506
(337) 234-7474 • FAX (337) 234-7774

Mechanical Contact: Hogan Guidry
hogan@meconsulting.com
Electrical Contact: David Carroll
david@meconsulting.com

CONSULTING PROJECT No.: 21198.00

Architectural Alliance Incorporated
387 Pine Street, Suite 720
Beaumont, Texas 77701
TEL: (409) 886-7100
FAX: (409) 886-1700
J. RICH CLARK, A.I.A.
RONALD N. JONES, A.I.A.
www.archalliance.com

PRELIMINARY
NOT FOR CONSTRUCTION, BIDDING, OR AS A BASIS FOR ISSUING A PERMIT. DOCUMENTS PREPARED BY DUSTIN DUVAL TX# 117604 WITH M&E CONSULTING, INC.

SMITH BUILDING RENOVATION
SPINDLETOP CENTER
655 S. 8TH Street
BEAUMONT, TX 77701

ISSUED FOR SCHEMATIC DESIGN
DATE: _____
DESIGN DEVELOPMENT
DATE: 04-18-22
BIDS & CONSTRUCTION
DATE: _____
REVISION: _____
DATE: _____
REVISION: _____
DATE: _____

DRAWINGS SHEET TITLE
PLUMBING PLAN

SHEET NUMBER
P200
21032
PROJECT NUMBER



Architectural Alliance Incorporated

357 Pine Street, Suite 720
Beaumont, Texas 77701
TEL: (409) 898-1745
FAX: (409) 898-1745
J. ROBERT CLARK, A.I.A.
RONALD W. JONES, A.I.A.
www.archalliance.com

PRELIMINARY

NOT FOR CONSTRUCTION,
BIDDING, OR AS A BASIS
FOR ISSUING A PERMIT.
DOCUMENTS PREPARED
BY DUSTIN DUVAL
TX# 117604 WITH
M&E CONSULTING, INC.

SMITH BUILDING RENOVATION

SPINDLETOP CENTER

BEAUMONT, TX 77701

655 S. 8TH STREET

ISSUED FOR SCHEMATIC DESIGN

DATE: _____

DESIGN DEVELOPMENT

DATE: 04-18-22

BIDS & CONSTRUCTION

DATE: _____

REVISION: _____

DATE: _____

REVISION: _____

DATE: _____

REVISION: _____

DATE: _____

DRAWINGS SHEET TITLE

PLUMBING & FIRE PROTECTION DETAILS

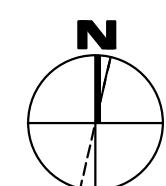
SHEET NUMBER

P300

21032
PROJECT NUMBER



1304 BERTRAND DRIVE SUITE F7
LAFAYETTE, LOUISIANA 70506
(337) 234-7474 • FAX (337) 234-7774
Mechanical Contact: Hogan Guidry
hogan@mecconsulting.com
Electrical Contact: David Carroll
david@mecconsulting.com
PROJECT No.: 21198.00

CALLED NORTH



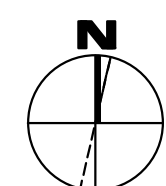
350 Poydras Street, Suite 720
 Beaumont, Texas 77701
 TEL: (409) 886-7146
 FAX: (409) 886-1745
 J. REBECCA CLARK, A.I.A.
 RONALD N. JONES, A.I.A.
 www.archalliance.com

PRELIMINARY

NOT FOR CONSTRUCTION,
 BIDDING, OR AS A BASIS
 FOR ISSUING A PERMIT.
 DOCUMENTS PREPARED
 BY DUSTIN DUVAL
 TX# 117604 WITH
 M&E CONSULTING, INC.

PLUMBING FIXTURE SCHEDULE

LABEL	FIXTURE TYPE	MANUFACTURER	PIPE CONNECTION				SPECIFICATION
			C.W.	H.W.	WASTE	VENT	
FD	FLOOR DRAIN	JOSAM SERIES 30000, WADE W-1100-A6-1, J. R. SMITH 2010A, MIFAB F1100-C, ZURN 415-BZ OR EQUIVALANT	-	-	3"	2"	BOTTOM OUTLET WITH DURA-COATED CAST IRON BODY. WITH CLAMPING COLLAR AND 6" DIAMETER NICKEL BRONZE STRAINER ADJUSTABLE VERTICALLY TO FLOOR LEVEL. WITH SQUARE PERFORATIONS AND VANDAL-PROOF SCREWS. PROVIDE TRAP PRIMER CONNECTION WHERE SHOWN ON PLANS. PROVIDE SURESEAL MODEL SS3000V (MIFAB MI-GARD-3) FLOOR DRAIN TRAP SEALER FOR 3" DIAMETER DRAIN (ASSE 1072) WHERE TRAP PRIMER LINE IS NOT SHOWN CONNECTING TO THE FLOOR DRAIN ON THE PLANS. COORDINATE FINAL ROUGH-IN ELEVATION WITH FINISHED FLOOR. REFER TO ARCHITECTURAL DRAWINGS FOR ADDITIONAL INFORMATION.
L-WH	LAVATORY	KOHLER K-1729, AMERICAN STANDARD 0124.131	1/2"	1/2"	2"	2"	WALL HUNG, 20" X 18", WHITE, VITREOUS CHINA, WALL MOUNTED LAVATORY WITH 4" FAUCET CENTERS. DELTA 22C101 (ZURN Z-81000-CP4, A.S. 6114.111.002) CAST BRASS BODY, CERAMIC DISC CARTRIDGE, SINGLE HANDLE FAUCET WITH MCGUIRE 155WC (KOHLER K-13885) OFFSET TAILPIECE WITH PERFORATED GRATE DRAIN; MCGUIRE 8872 (KOHLER K-8998) 1-1/4" CAST BRASS P-TRAP WITH CLEANOUT PLUG, 3/8" ANGLE SUPPLIES WITH STOPS, AND JOSAM, WADE 520 CONCEALED ARM FLOOR ANCHORED CARRIER. PROVIDE J.R. SMITH 2698-ADA PRIME-EZE, ZURN Z1021-ADA OR EQUAL WATER SAVER TRAP PRIMER WHERE INDICATED ON PLANS. TRUEBRO MODEL 103, (ZURN Z8946-3-NT) INSULATING KIT. INSTALL PER A.D.A. REQUIREMENTS. CAULK AROUND PERIMETER OF FIXTURE. PROVIDE LAWLER 570 (LEONARD 170-LF, WATTS LFUSG-B SERIES) THERMOSTATIC MIXING VALVE, 3/8" INLETS & OUTLET CONNECTIONS, TEMPERATURE CONTROL DEVICE THAT CONFORMS TO ASSE 1070.
SH-H	SHOWER	AQUA BATH MODEL C4136BF-FUS 3/4" (AQUARIUS S4136BF.75)	1/2"	1/2"	3"	2"	ACRYLIC, WHITE, INSIDE DIMENSIONS: 36" X 36" X 84", OUTSIDE DIMENSIONS: 41" X 37" X 82.75". FLOOR WITH SLIP RESISTANCE, 1" DIAMETER 18 GAUGE STAINLESS STEEL CURTAIN ROD, WHITE SHOWER CURTAIN, ANTI-BACTERIAL, AND HOOKS; AND STAINLESS STEEL DRAIN STRAINER. BRADLEY MODEL 1C-EF/SF/B24/EV, EQUA-FLO PRESSURE BALANCED MIXING VALVE, VACUUM BREAKER, HAND HELD SHOWER HEAD WITH HOSE, AND MOUNTING BAR. BRADLEY MODEL 4455F DELUXE SHOWERHEAD WITH BALL JOINT AND WALL FLANGE, (B24) 60" FLEXIBLE HOSE, 24" METAL SLIDE BAR AND VACUUM BREAKER, INDIVIDUAL STOPS, SAFETY LIMIT STOP, CHECK STOPS, AND (DV) IN-WALL DIVERTER VALVE TO SELECT HAND HELD SHOWER HEAD OR WALL MOUNTED SHOWER HEAD. PROVIDE PHENOLIC FOLD UP SEAT, DOME LIGHT AND 18 GAUGE STAINLESS STEEL GRAB BARS. INSTALL PER A.D.A. REQUIREMENTS. CAULK AROUND PERIMETER OF FIXTURE. ASSE 1016.
SK-A	SINK	ELKAY LR-1919, JUST SL-2019-A-GR	1/2"	1/2"	2"	2"	SELF RIMMING, 19" X 19" X 7.5", SINGLE COMPARTMENT, 18 GAUGE, TYPE 304 SELF RIMMING SINK WITH LK810GN05T4 (ZURN 871B4-XL) 5" REACH GOOSENECK FAUCET WITH 4" WRIST BLADE HANDLES, LK-99 (JUST JB-99) BASKET STRAINER, MCGUIRE 8912 1-1/2" CAST BRASS P-TRAP WITH CLEANOUT PLUG AND 3/8" ANGLE SUPPLIES WITH STOPS. CAULK AROUND PERIMETER OF FIXTURE.
SK-BA	SINK	ELKAY LRAD-3319653, JUST DL-ADA-1933-A-GR	1/2"	1/2"	2"	2"	SELF RIMMING, 33" X 19" X 6.5", DOUBLE COMPARTMENT, 18 GAUGE, TYPE 304 SELF RIMMING SINK WITH LK810GN08T4 (Zurn 871C4-XL, A.S. 6409.170.002) 8" REACH GOOSENECK FAUCET WITH 4" WRIST BLADE HANDLES, LK-99 (JUST JB-99) STAINLESS STEEL BASKET STRAINERS, MCGUIRE 8912 1-1/2" CAST BRASS P-TRAP WITH CLEANOUT PLUG, CONTINUOUS WASTE PIPING AND 3/8" ANGLE SUPPLIES WITH STOPS. CAULK AROUND PERIMETER OF FIXTURE.
SS-F	SERVICE SINK	FIAT MSB-2424, MUSTEE 63M	3/4"	3/4"	2"	2"	FLOOR MOUNTED, 24" X 24" X 10" WHITE MOLDED STONE MOP SERVICE BASIN WITH #1453-BB FLAT TYPE STAINLESS STEEL DRAIN, VINYL BUMPER GUARD, #830-AA (T&S BRASS B-0665-BSTR) MIXING FAUCET, #832-AA (T&S BRASS B-0654) HOSE AND STAINLESS STEEL HOSE BRACKET, #889-CC (T&S BRASS B-0653) STAINLESS STEEL MOP HANGER, #833-AA SILICONE SEALANT AND TWO (2) #MSG 2424 STAINLESS STEEL WALL GUARDS (SIDE AND BACK). CAULK AROUND PERIMETER OF FIXTURE.
U-W	URINAL	KOHLER K-4904-ET, AMERICAN STANDARD 6590.001	3/4"	-	2"	2"	WALL HUNG, WHITE, VITREOUS CHINA WALL HUNG WASHOUT URINAL WITH 3/4" TOP SPUD INLET. SLOAN 186-1 (ZURN AQUAFLUSH PLUS Z-6003-PL-WS1) FLUSH VALVE WITH A.D.A. COMPLIANT HANDLE ASSEMBLY, VANDAL RESISTANT STOP CAP, VACUUM BREAKER AND STOP. UNIT SHALL BE COMPLETE WITH WADE 400-M11 (MIFAB MC-32, JOSAM 17560) SINGLE, UNIVERSAL HANGER PLATE CARRIER WITH PIPE UPRIGHTS, WELDED BASE FEET AND SUPPORT HARDWARE, AND STAINLESS STEEL REMOVABLE STRAINER. REFER TO ARCHITECTURAL DRAWINGS FOR MOUNTING HEIGHTS AND WALL THICKNESS. INSTALL PER A.D.A. REQUIREMENTS. CAULK AROUND PERIMETER OF FIXTURE.
WC-F	WATER CLOSET	KOHLER K-96053, AMERICAN STANDARD 2234.001	1"	-	4"	3"	FLOOR MOUNTED, WHITE, VITREOUS CHINA, SIPHON JET, ELONGATED WATER CLOSET. K-4670-C (A.S. 5901.100, BEMIS 1955CT, BENEKE 523, CHURCH 295CT, CENTOCO 500STSCC) SOLID PLASTIC, WHITE OPEN-FRONT TOILET SEAT LESS COVER, CHECK HINGE AND WITH STA-TITE COMMERCIAL FASTENING SYSTEM; K-4562 BOLT CAP. SLOAN 111 (ZURN AQUAFLUSH PLUS Z6000PL-WS1) FLUSH VALVE WITH A.D.A. COMPLIANT HANDLE ASSEMBLY, VANDAL RESISTANT STOP CAP, VACUUM BREAKER AND STOP. INSTALL PER A.D.A. REQUIREMENTS. FLUSH VALVE HANDLE TO BE ON WIDE SIDE OF STALL. INSTALL WAX SEAL BELOW FIXTURE. CAULK AROUND PERIMETER OF FIXTURE.
WC-FH	WATER CLOSET	KOHLER K-96057, AMERICAN STANDARD 3043.001	1"	-	4"	3"	FLOOR MOUNTED, WHITE, VITREOUS CHINA, SIPHON JET, ELONGATED WATER CLOSET. K-4670-C (A.S. 5901.100, BEMIS 1955CT, BENEKE 523, CHURCH 295CT, CENTOCO 500STSCC) SOLID PLASTIC, WHITE OPEN-FRONT TOILET SEAT LESS COVER, CHECK HINGE AND WITH STA-TITE COMMERCIAL FASTENING SYSTEM; K-4562 BOLT CAP. SLOAN 111 (ZURN AQUAFLUSH PLUS Z6000PL-WS1) FLUSH VALVE WITH A.D.A. COMPLIANT HANDLE ASSEMBLY, VANDAL RESISTANT STOP CAP, VACUUM BREAKER AND STOP. INSTALL PER A.D.A. REQUIREMENTS. FLUSH VALVE HANDLE TO BE ON WIDE SIDE OF STALL. INSTALL WAX SEAL BELOW FIXTURE. CAULK AROUND PERIMETER OF FIXTURE.



CALLED NORTH

1304 BERTRAND DRIVE SUITE F7
 LAFAYETTE, LOUISIANA 70506
 (337) 234-7474 • FAX (337) 234-7774
 Mechanical Contact: Hogan Guidry
 hogan@meconsulting.com
 Electrical Contact: David Carroll
 david@meconsulting.com
 PROJECT No.: 21198.00

SMITH BUILDING RENOVATION
 SPINDLETOP CENTER
 655 S. 8TH Street
 BEAUMONT, TX 77701

ISSUED FOR SCHEMATIC DESIGN
 DATE: _____
 DESIGN DEVELOPMENT
 DATE: 04-18-22
 BIDS & CONSTRUCTION
 DATE: _____
 REVISION: _____
 DATE: _____
 REVISION: _____
 DATE: _____
 REVISION: _____
 DATE: _____

DRAWINGS SHEET TITLE
PLUMBING SCHEDULES

SHEET NUMBER
P301
 21032
 PROJECT NUMBER