

DEFINE

ELECTRICAL ABBREVIATIONS

CT	DENOTES COUNTER-TOP-HEIGHT MOUNTED. CONTRACTOR TO VERIFY COUNTER TOP HEIGHT AND HEIGHT OF BACK SPLASH.
E	DENOTES EMERGENCY DEVICE
G	DENOTES GROUND FAULT INTERRUPTER PROTECTED
WP	DENOTES WEATHERPROOF
AFF	DENOTES ABOVE FINISHED FLOOR
C	DENOTES CONDUIT
A	DENOTES AMP
EWC	ELECTRICAL WATER COOLER
W	WALL MOUNTED-48" ABOVE FINISHED FLOOR OR AS NOTED
CB	CODE BLUE
IG	DENOTES ISOLATED GROUND
FDS	FUSED DISCONNECT SWITCH
BOF	BOTTOM OF FIXTURE
MRR	MANUFACTURER'S RECOMMENDED RATING
W	WEATHER RESISTANT
VOJ	VERIFY ON JOB
VR	VANDAL RESISTANT
SPD	SURGE PROTECTION DEVICE - REFER TO SPECIFICATIONS.

ELECTRICAL LINE TYPE LEGEND

	SCREENED LINES/SYMBOLS INDICATE EXISTING DEVICES TO REMAIN.
	DASHED LINES/SYMBOLS INDICATE EXISTING DEVICES TO BE REMOVED OR RELOCATED.
	BOLD LINES/SYMBOLS INDICATE NEW OR RELOCATED DEVICES.

DESIGN

ELECTRICAL LEGEND

SYMBOL	LIGHTING DESCRIPTION	SYMBOL	SPECIAL SYSTEMS DESCRIPTION
	LIGHTING FIXTURE-REFER TO LIGHTING FIXTURE SCHEDULE	∇ xx	COMMUNICATIONS OUTLET - DEEP 4" SQUARE BOX WITH SINGLE GANG PLASTER RING WITH CABLE/PULLSTRING IN 1" CONDUIT TO ACCESSIBLE CEILING (18" A.F.F. OR AS NOTED) - PROVIDE A BLANK PLATE OR XX DENOTES CABLE TYPE AND QUANTITY; P=PHONE, D=DATA, C=COAX REFER TO SPECIFICATIONS
	LIGHTING FIXTURE-REFER TO LIGHTING FIXTURE SCHEDULE	TV	TELEVISION OUTLET-DEEP 4" SQUARE BOX WITH SINGLE GANG PLASTER RING WITH CABLE/PULLSTRING IN 1" C. TO ACCESSIBLE CEILING (VERIFY MOUNTING HEIGHT AND LOCATION WITH ARCHITECT) - PROVIDE BLANK PLATE OR XX DENOTES CABLE TYPE AND QUANTITY; P=PHONE, D=DATA, C=COAX REFER TO SPECIFICATIONS
	LIGHTING FIXTURE-REFER TO LIGHTING FIXTURE SCHEDULE	M xx	DATA JACK ABOVE CEILING W/ 30' OF SLACK (FUTURE WIRELESS ACCESS POINT) XX - DENOTES CABLE QUANTITY
	LIGHTING FIXTURE-REFER TO LIGHTING FIXTURE SCHEDULE	AV	AUDIO & VISUAL - DEEP 4" SQUARE DEEP DOUBLE GANG BOX WITH DOUBLE GANG PLASTER RING (MOUNT 18" A.F.F. V.O.J.) WITH 1 1/4" CONDUIT WITH CABLE/PULLSTRING TO A MINIMUM OF 6' ABOVE CEILING.
	CEILING MOUNTED EXIT LIGHT - REFER TO LIGHTING FIXTURE SCHEDULE - ARROWS DEFINE DIRECTION	OP	OVERHEAD PROJECTOR - DEEP 4" SQUARE BOX INSTALLED ABOVE CEILING ADJACENT TO OVERHEAD PROJECTOR (SEE DETAIL)
	WALL MOUNTED EXIT LIGHT - COORDINATE FINAL MOUNTING HEIGHT WITH THE ARCHITECT - REFER TO LIGHTING FIXTURE SCHEDULE - ARROWS DEFINE DIRECTION	AO	AUDIO & VISUAL - RECESSED FLOOR BOX - WIREMOLD RFB9 OR EQUAL (SEE DETAIL)
	EMERGENCY LIGHT (8"-0" A.F.F. OR AS NOTED) - REFER TO LIGHTING FIXTURE SCHEDULE	SB	SMART BOARD J-BOX - 4" SQUARE DEEP BOX WITH SINGLE GANG PLASTER RING WITH CABLE/PULLSTRING IN 3/4" CONDUIT TO ACCESSIBLE CEILING. (SEE DETAIL)
	CEILING MOUNTED EGRESS LIGHT - REFER TO LIGHTING FIXTURE SCHEDULE	CS	CONTROL STATION - 4" SQUARE DEEP BOX WITH SINGLE GANG PLASTER RING WITH CABLE/PULLSTRING IN 3/4" CONDUIT TO ACCESSIBLE CEILING. (SEE DETAIL)
	PHOTOCELL	NURSE CALL DESCRIPTION	
	SINGLE POLE TOGGLE SWITCH (48" A.F.F. TO CENTER OF DEVICE OR AS NOTED)	▲	NURSE CALL DOME LIGHT - DEEP 4" SQUARE BOX WITH SINGLE GANG PLASTER RING WITH CABLE/PULLSTRING IN 3/4" CONDUIT
	THREE-WAY TOGGLE SWITCH (48" A.F.F. TO CENTER OF DEVICE OR AS NOTED)	⌋	NURSE CALL PULL CORD STATION - DEEP 4" SQUARE BOX WITH SINGLE GANG PLASTER RING WITH CABLE/PULLSTRING IN 3/4" CONDUIT TO ACCESSIBLE CEILING
	WALL MOUNTED DIMMER SWITCH WITH ON/OFF AND 0-10V OUTPUT DIMMING. DIMMER MUST BE COMPATIBLE WITH BALLAST OR LED. REFER TO SPECIFICATIONS. PROVIDE ALL NECESSARY CONDUCTORS FOR COMPLETE OPERATING SYSTEM. (48" A.F.F. TO CENTER OF DEVICE OR AS NOTED)	NK	NURSE CALL STATION - MASTER - DEEP 4" SQUARE BOX WITH SINGLE GANG PLASTER RING WITH CABLE/PULLSTRING IN 3/4" CONDUIT TO ACCESSIBLE CEILING
	MOTOR RATED SWITCH (48" A.F.F. TO CENTER OF DEVICE OR AS NOTED). CONTRACTOR TO PROVIDE SWITCH TO DE-ENERGIZE EACH CURRENT CARRYING CONDUCTOR. LOCATE ADJACENT TO EQUIPMENT BEING SERVED IN A READILY ACCESSIBLE LOCATION.	NS	NURSE CALL PATIENT STATION - DEEP 4" SQUARE BOX WITH SINGLE GANG PLASTER RING WITH CABLE/PULLSTRING IN 3/4" CONDUIT TO ACCESSIBLE CEILING
	SINGLE POLE KEYSWITCH (48" A.F.F. TO CENTER OF DEVICE OR AS NOTED)	ND	NURSE CALL DUTY STATION - DEEP 4" SQUARE BOX WITH SINGLE GANG PLASTER RING WITH CABLE/PULLSTRING IN 3/4" CONDUIT TO ACCESSIBLE CEILING
	SWITCH (48" A.F.F. TO CENTER OF DEVICE OR AS NOTED) COORDINATE TYPE AND INSTALLATION REQUIREMENTS WITH MANUFACTURE. COORDINATE LOCATION WITH OWNER.	NST	NURSE CALL STAFF STATION - DEEP 4" SQUARE BOX WITH SINGLE GANG PLASTER RING WITH CABLE/PULLSTRING IN 3/4" CONDUIT TO ACCESSIBLE CEILING
	SINGLE POLE SWITCH. MOUNT IN DOOR SWING. LEE ELECTRIC: 210DN	FIRE ALARM DESCRIPTION	
	INBOARD AND OUTBOARD SWITCHING UNLESS NOTED OTHERWISE (48" A.F.F. TO CENTER OF DEVICE OR AS NOTED)	RA	FIRE ALARM PULL STATION - DEEP 4" SQUARE BOX WITH SINGLE GANG PLASTER RING WITH CABLE IN 3/4" CONDUIT TO ACCESSIBLE CEILING (48" A.F.F. TO CENTER OF DEVICE)
	SINGLE POLE DIGITAL PRESET COUNT DOWN TYPE TIMER SWITCH (48" A.F.F. TO CENTER OF DEVICE OR AS NOTED) SENSORSWITCH PTS 60 OR EQUAL	RS	FIRE ALARM VALVE SUPERVISORY SWITCH- PROVIDE MONITORING MODULE FOR ALL VALVE SUPERVISORY SWITCHES, COORDINATE REQUIREMENTS, QUANTITIES, AND LOCATIONS WITH THE SPRINKLER CONTRACTOR
	WALL MOUNTED OCCUPANCY SENSOR (48" AFF TO CENTER OF DEVICE OR AS NOTED) - REFER TO SPECIFICATIONS.	RW	FIRE ALARM FLOW DETECTOR/SWITCH - PROVIDE MONITORING MODULE FOR ALL FLOW DETECTOR/SWITCHES, COORDINATE REQUIREMENTS, QUANTITIES, AND LOCATIONS WITH THE SPRINKLER CONTRACTOR
	WALL MOUNTED DOUBLE SWITCH OCCUPANCY SENSOR (48" AFF TO CENTER OF DEVICE OR AS NOTED) - REFER TO SPECIFICATIONS.	RDH	MAGNETIC DOOR HOLDER - CONTRACTOR TO CONNECT TO 120V CIRCUIT. DOOR HOLDERS SHALL RELEASE UPON ACTIVATION OF THE FIRE ALARM SYSTEM
	CORNER MOUNTED OCCUPANCY SENSOR - MOUNTING HEIGHT TO BE DETERMINED PER MANUFACTURER'S RECOMMENDATIONS FOR OPTIMAL COVERAGE - MYTECH, WATT STOPPER	FCMP	FIRE ALARM CONTROL PANEL
POWER DESCRIPTION		FA	FIRE ALARM ANNUNCIATOR PANEL - BACK BOX WITH 1" CONDUIT MINIMUM TO ACCESSIBLE CEILING
	DUPLEX CONVENIENCE OUTLET (18" A.F.F. FOR GENERAL AREAS, 36" A.F.F. FOR GARAGES, HANGARS AND THE LIKE OR AS NOTED)	SD	SMOKE DETECTOR - DEEP 4" SQUARE BOX WITH SINGLE GANG PLASTER RING WITH CABLE IN 3/4" CONDUIT TO ACCESSIBLE CEILING.
	TELEVISION OUTLET (VERIFY MOUNTING HEIGHT AND LOCATION WITH ARCHITECT)	SD2	SINGLE STATION SMOKE DETECTOR 120 VOLT WITH BATTERY BACKUP AND INTERCONNECTED TO ALL SMOKE DETECTORS IN UNIT.
	ELECTRICAL WATER COOLER; COORDINATE ELECTRICAL DEVICE/OUTLET TYPE AND LOCATION WITH PLUMBING CONTRACTOR (CONCEAL OUTLET/DEVICE BEHIND COOLER) OUTLET TO BE GROUND FAULT INTERRUPTER PROTECTED.	SD1	FIRE ALARM DUCT DETECTOR
	MICROWAVE OUTLET - RECESSED 20 AMP DUPLEX OUTLET. HUBBELL OR EQUAL. VERIFY EXACT MOUNTING LOCATION WITH OWNER/ARCHITECT PRIOR TO ROUGH IN.	SD	HEAT DETECTOR - DEEP 4" SQUARE BOX WITH SINGLE GANG PLASTER RING WITH CABLE IN 3/4" CONDUIT TO ACCESSIBLE CEILING.
	WATER HEATER; COORDINATE ELECTRICAL OUTLET/DISCONNECT TYPE AND LOCATION WITH PLUMBING CONTRACTOR	SD	ADDRESSABLE INPUT/OUTPUT MODULE
	SMART BOARD OUTLET - SB DENOTES HEIGHT OF OUTLET PER OWNER	SX	FIRE ALARM WALL MOUNTED STROBE UNIT - DEEP 4" SQUARE BOX WITH SINGLE GANG PLASTER RING WITH CABLE IN 3/4" CONDUIT TO ACCESSIBLE CEILING (MOUNTING HEIGHT AS PER NFPA 72, ALL DEVICES SHALL BE AT SAME HEIGHT) XX DENOTES CANDELA RATING
	DUPLEX CONVENIENCE OUTLET (18" A.F.F. OR AS NOTED) TR DENOTES TAMPER RESISTANT - HUBBELL: RR205TR, GFTR20 OR EQUAL.	SX	FIRE ALARM CEILING MOUNTED STROBE - XX DENOTES CANDELA RATING
	COMBINATION RECEPTACLE/OUTLET AND DUAL USB CHARGER - LEVITON T5832 OR EQUAL. (18" A.F.F. OR AS NOTED)	SM	FIRE ALARM WALL MOUNTED HORN/STROBE UNIT - DEEP 4" SQUARE BOX WITH SINGLE GANG PLASTER RING WITH CABLE IN 3/4" CONDUIT TO ACCESSIBLE CEILING (MOUNTING HEIGHT AS PER NFPA 72, ALL DEVICES SHALL BE AT THE SAME HEIGHT)
	DOUBLE DUPLEX CONVENIENCE OUTLET (18" A.F.F. OR AS NOTED)	SM	FIRE ALARM CEILING MOUNTED HORN/STROBE - XX DENOTES CANDELA RATING
	SPECIAL OUTLET (VERIFY TYPE AND MOUNTING HEIGHT WITH EQUIPMENT MANUFACTURE)	SM	FIRE ALARM WALL MOUNTED SPEAKER - DEEP 4" SQUARE BOX WITH SINGLE GANG PLASTER RING WITH CABLE IN 3/4" CONDUIT TO ACCESSIBLE CEILING (MOUNTING HEIGHT AS PER NFPA 72, ALL DEVICES SHALL BE AT THE SAME HEIGHT)
	COUNTER TOP DUPLEX OUTLET (CLEAR BACK SPLASH)	SM	FIRE ALARM CEILING MOUNTED SPEAKER
	CEILING MOUNTED OUTLET	SM	FIRE ALARM WALL MOUNTED SPEAKER/STROBE UNIT - DEEP 4" SQUARE BOX WITH SINGLE GANG PLASTER RING WITH CABLE IN 3/4" CONDUIT TO ACCESSIBLE CEILING (MOUNTING HEIGHT AS PER NFPA 72, ALL DEVICES SHALL BE AT THE SAME HEIGHT) XX DENOTES CANDELA RATING
	MOTOR STARTER - PROVIDED BY MECHANICAL CONTRACTOR, INSTALLED BY ELECTRICAL CONTRACTOR.	SM	FIRE ALARM CEILING MOUNTED SPEAKER STROBE - XX DENOTES CANDELA RATING
	FLOOR BOX, POWER (COORDINATE FINAL LOCATION WITH OWNER/ARCHITECT PRIOR TO INSTALLATION) MINIMUM 2-3/4" CONDUITS TO ACCESSIBLE CEILING.	SM	FIRE ALARM CEILING MOUNTED HORN/STROBE UNIT - DEEP 4" SQUARE BOX WITH SINGLE GANG PLASTER RING WITH CABLE IN 3/4" CONDUIT TO ACCESSIBLE CEILING (MOUNTING HEIGHT AS PER NFPA 72, ALL DEVICES SHALL BE AT THE SAME HEIGHT) XX DENOTES CANDELA RATING
	FLOOR BOX, COMBINATION POWER/COMMUNICATIONS (COORDINATE FINAL LOCATION WITH OWNER/ARCHITECT PRIOR TO INSTALLATION. 2-1" CONDUITS IN SLAB TO 6" ABOVE ACCESSIBLE CEILING - PROVIDE BLANK PLATE OR XX DENOTES CABLE TYPE AND QUANTITY; P=PHONE, D=DATA, C=COAX REFER TO SPECIFICATIONS)	SM	SPRINKLER ALARM BELL (BY OTHERS) - PROVIDE DEDICATED LOW VOLTAGE FIRE ALARM CIRCUIT FROM THE FIRE ALARM CONTROL PANEL. COORDINATE WITH SPRINKLER CONTRACTOR.
	JUNCTION BOX	SECURITY SYSTEM DESCRIPTION	
	CONTROL POWER FOR ENERGY MANAGEMENT SYSTEM - PROVIDE OUTLET OR JUNCTION BOX AT LOCATION PER EMS CONTRACTOR	SC	SURVEILLANCE CAMERA - DEEP 4" SQUARE BOX WITH SINGLE GANG PLASTER RING WITH CABLE/PULLSTRING IN 3/4" CONDUIT TO ACCESSIBLE CEILING. VERIFY HEIGHT WITH ENGINEER.
	HAND DRYER - COORDINATE OUTLET/DEVICE TYPE WITH SUPPLIER. COORDINATE LOCATION WITH THE OWNER/ARCHITECT PRIOR TO ROUGH-IN.	SC	CARD READER - DEEP 4" SQUARE BOX WITH SINGLE GANG PLASTER RING WITH CABLE/PULLSTRING IN 3/4" CONDUIT TO ACCESSIBLE CEILING (48" A.F.F. TO CENTER OF DEVICE OR AS NOTED)
	ELECTRICAL MOTOR (COORDINATE TERMINATION WITH SUPPLIER)	SD	SECURITY SYSTEM MOTION DETECTOR - LONG RANGE - COORDINATE ROUGH-IN REQUIREMENTS WITH SECURITY SYSTEM PROVIDER.
	FUSED DISCONNECT SWITCH - FUSE AT MANUFACTURE RECOMMENDED RATING UNLESS NOTED OTHERWISE. XX DENOTES DISCONNECT SIZE, Y DENOTES PHASE, ZZ DENOTES FUSE SIZE.	SD	SECURITY SYSTEM MOTION DETECTOR - WIDE RANGE - COORDINATE ROUGH-IN REQUIREMENTS WITH SECURITY SYSTEM PROVIDER.
	ELECTRICAL PANEL SURFACE MOUNTED	SM	SECURITY SYSTEM KEY PAD - DEEP 4" SQUARE BOX WITH SINGLE GANG PLASTER RING WITH CABLE/PULLSTRING IN 3/4" CONDUIT TO ACCESSIBLE CEILING
	ELECTRICAL PANEL FLUSH MOUNTED	SM	SECURITY SYSTEM DOOR CONTACT - COORDINATE ROUGH-IN REQUIREMENTS WITH SECURITY SYSTEM PROVIDER.
	TELEPHONE/POWER POLE: COORDINATE EXACT MOUNTING LOCATION WITH FURNITURE MANUFACTURE. MAKE FINAL CONNECTIONS. REFER TO DETAIL. WIRE MOLD: 30TP-4V	SM	SECURITY SYSTEM HORN - DEEP 4" SQUARE BOX WITH SINGLE GANG PLASTER RING WITH CABLE/PULLSTRING IN 3/4" CONDUIT TO ACCESSIBLE CEILING.
	CONDUIT RUN CONCEALED IN WALL OR ABOVE CEILING		
	CONDUIT RUN CONCEALED UNDER FLOOR OR BELOW GRADE		
	HOMERUN TO ELECTRIC PANEL BOARD (INDICATED NUMBER OF CIRCUIT BY NUMBER OF ARROWS)		
	THREE (3) CONDUCTORS RUN IN CONDUIT. EVERY CIRCUIT TO HAVE A GROUND, SHARED NEUTRAL IS NOT ALLOWED.		
	FOUR (4) CONDUCTORS RUN IN CONDUIT. EVERY CIRCUIT TO HAVE A GROUND, SHARED NEUTRAL IS NOT ALLOWED.		
	FIVE (5) CONDUCTORS RUN IN CONDUIT. EVERY CIRCUIT TO HAVE A GROUND, SHARED NEUTRAL IS NOT ALLOWED.		
	FOUR (4) CONDUCTORS RUN IN CONDUIT, ONE CONDUCTOR DESIGNATED FOR ISOLATED GROUND		
	MOTORIZED DAMPER - PROVIDE BY OTHERS. ELECTRICALLY POWERED BY ELECTRICAL CONTRACTOR WHEN NOTED.		
	START - STOP STATION - COORDINATE WITH EQUIPMENT PROVIDER.		
	VARIABLE FREQUENCY DRIVE PROVIDED BY MECHANICAL AND INSTALLED BY ELECTRICAL. MAINTAIN CLEARANCES PER NFPA 70		
INTERCOM DESCRIPTION			
	CLOCK, D-DENOTES DOUBLE FACE, S-DENOTES SINGLE FACE - DEEP 4" SQUARE BOX WITH SINGLE GANG PLASTER RING WITH CABLE/PULLSTRING IN 3/4" CONDUIT TO ACCESSIBLE CEILING		
	ADMINISTRATIVE PHONE - PHONE FOR SPACE PER SPECIFICATIONS		
	NON-ADMINISTRATIVE PHONE - PHONE FOR SPACE PER SPECIFICATIONS		
	CLASSROOM PHONE - PROVIDE PHONE FOR SPACE PER SPECIFICATIONS		
	CEILING MOUNTED SPEAKER - PROVIDE SPEAKER BACK BOX AND CABLING		
	INTERCOM CONTROL STATION - DEEP 4" SQUARE BOX WITH SINGLE GANG PLASTER RING WITH CABLE/PULLSTRING IN 3/4" CONDUIT TO ACCESSIBLE CEILING.		
	TRUMPET SPEAKER - DEEP 4" SQUARE BOX WITH SINGLE GANG PLASTER RING WITH CABLE/PULLSTRING IN 3/4" CONDUIT TO ACCESSIBLE CEILING. VERIFY HEIGHT WITH ENGINEER.		

NOTES:
1. ITEMS ON THIS SCHEDULE ARE NOT NECESSARILY SHOWN ON PLANS.

DELIVER

ELECTRICAL GENERAL NOTES

- ELECTRICAL INSTALLATION SHALL BE IN ACCORDANCE WITH THE CURRENT EDITION OF THE NATIONAL ELECTRICAL CODE (NEC) AS WELL AS ANY LOCAL CODES AND ORDINANCES.
- MAINTAIN PROPER WORKING SPACE CLEARANCES ABOUT ELECTRICAL EQUIPMENT PER NEC ARTICLE 110.26.
- FULLY COORDINATE ALL ELECTRICAL REQUIREMENTS OF EQUIPMENT BEING FURNISHED BY ALL DIVISIONS UNDER THIS CONSTRUCTION CONTRACT. EACH SYSTEM SHALL BE COMPLETE AND FULLY FUNCTIONAL. THIS INCLUDES MECHANICAL, PLUMBING, OWNER PROVIDED AND CONTRACTOR PROVIDED EQUIPMENT. CONTRACTOR TO REFER TO EQUIPMENT INSTALLATION DOCUMENTS AND SHOP DRAWINGS PRIOR TO ANY ROUGH-IN.
- CONTRACTOR SHALL COORDINATE CIRCUIT BREAKER AND FUSE SIZES FOR MECHANICAL EQUIPMENT PER SUBMITTED EQUIPMENT MANUFACTURER'S RECOMMENDED NAMEPLATE RATINGS PRIOR TO SHOP DRAWING PHASE OF PROJECT.
- INTERRUPTION OF SERVICE: BEFORE ANY EQUIPMENT IS SHUT DOWN FOR DISCONNECTING OR TIE-INS, ARRANGEMENTS SHALL BE MADE WITH THE ARCHITECT AND THIS WORK SHALL BE DONE AT THE TIME BEST SUITED TO THE OWNER. OUTAGES MUST BE SCHEDULED THROUGH THE ARCHITECT. THE ARCHITECT SHALL REVIEW EXTENT, LENGTH, AND TIMING OF OUTAGES. SERVICES SHALL BE RESTORED THE SAME DAY. PROVIDE TEMPORARY POWER OR OTHER SERVICES AS REQUIRED DURING OUTAGES. ALL OVERTIME OR PREMIUM COSTS ASSOCIATED WITH THIS WORK SHALL BE INCLUDED IN THE BASE BID.
- COORDINATE LOCATION OF ELECTRICAL EQUIPMENT WITH PIPES AND DUCT WORK BEING SUPPLIED BY OTHER DIVISIONS. THE EQUIPMENT SPACE INCLUDED ALL REFERENCED NEC CLEARANCES SHALL BE MAINTAINED. IF ANY PIPES OR DUCT WORK VIOLATE ANY ELECTRICAL CLEARANCE REQUIREMENTS, IT SHALL BE REMOVED AND RELOCATED AT THE CONTRACTOR'S EXPENSE. DRIP PANS ARE NOT PERMITTED UNLESS SPECIFICALLY CALLED FOR IN THE CONSTRUCTION DOCUMENTS.
- IT SHALL BE THE CONTRACTOR'S RESPONSIBILITY TO SEE THAT ALL EQUIPMENT THAT MAY REQUIRE MAINTENANCE AND OPERATION ARE READILY ACCESSIBLE, REGARDLESS OF THE DIAGRAMMATIC LOCATION SHOWN ON THE DRAWINGS. ALL CONNECTIONS TO FIXTURES AND EQUIPMENT SHOWN ON THE DRAWINGS SHALL BE CONSIDERED DIAGRAMMATIC UNLESS OTHERWISE INDICATED BY A SPECIFIC DETAIL ON THE DRAWINGS. THE ACTUAL CONNECTIONS SHALL BE MADE TO FULLY SUIT THE REQUIREMENTS OF EACH CASE AND ADEQUATELY PROVIDE FOR SERVICING.
- CONTRACTOR SHALL TAMP AND BACKFILL ALL TRENCHES. TRENCHES SHALL BE LEVEL WITH FINISH GRADE.
- CONTRACTOR SHALL VISIT THE SITE AND DETERMINE THE EXTENT OF DEMOLITION WORK AND NEW WORK NEEDED FOR THIS PROJECT.
- CONTRACTOR SHALL BECOME FAMILIAR WITH THE PROJECT SCOPE, CONSTRAINTS, UTILITY CONNECTIONS, AND BUILDING SERVICES.
- CONTRACTOR SHALL GIVE FIRST RIGHT TO REFUSAL OF SALVAGE TO THE OWNER. IF THE OWNER ELECTS TO NOT KEEP SALVAGE, CONTRACTOR SHALL REMOVE SALVAGE BY LAWFUL MEANS.
- DRAWINGS ARE SCHEMATIC AND DIAGRAMMATIC IN NATURE. DRAWINGS SHALL NOT BE SCALED. COORDINATE ROUTING OF SERVICES WITH SITE CONDITIONS AND WITH WORK OF OTHER TRADES.
- FIELD VERIFY DIMENSIONS PRIOR TO ORDERING, FABRICATING, AND ERECTION OF MATERIAL AND/OR EQUIPMENT. NOTIFY THE ENGINEER OF DISCREPANCIES IN A TIMELY MANNER.
- SEAL PENETRATIONS THROUGH THE BUILDING ENVELOPE. PENETRATIONS THROUGH RATED WALLS, FLOORS, PARTITIONS AND ASSEMBLIES SHALL BE INSTALLED AND FIRSAFED TO MEET UL FIRE RESISTANCE LISTING AND NFPA REQUIREMENTS FOR THE PENETRATION.
- COORDINATE DEVICES REQUIRING ACCESS PANELS WITH THE ARCHITECT AND OTHER TRADES.
- DEVICE SYMBOLS ALONG WITH DRAWINGS, DRAWING NOTES, AND SPECIFICATIONS ARE INTENDED TO PROVIDE A COMPLETE SYSTEM. CONTRACTOR TO COORDINATE WITH ALL TRADES TO PROVIDE A COMPLETE SYSTEM.

1304 BERTRAND DRIVE SUITE F7
LAFAYETTE, LOUISIANA 70506
(337) 234-7474 • FAX (337) 234-7774
Mechanical Contact: Hogan Guidry
hogan@meconsulting.com
Electrical Contact: David Carroll
david@meconsulting.com
PROJECT No.: 21198.00

PRELIMINARY

NOT FOR CONSTRUCTION, BIDDING, OR AS A BASIS FOR ISSUING A PERMIT. DOCUMENTS PREPARED BY DAVID CARROLL, TXF137373 WITH M&E CONSULTING, INC.

SMITH BUILDING RENOVATION

SPINDLETOP CENTER

655 S. 6TH STREET
BEAUMONT, TX 77701

ISSUED FOR SCHEMATIC DESIGN

DATE: _____

DESIGN DEVELOPMENT

DATE: 04-18-22

BIDS & CONSTRUCTION

DATE: _____

REVISION: _____

DATE: _____

REVISION: _____

DATE: _____

DRAWINGS SHEET TITLE
ELECTRICAL LEGEND & NOTES

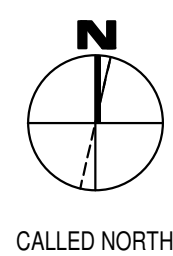
SHEET NUMBER
E000

21032
PROJECT NUMBER



GENERAL ELECTRICAL DEMOLITION NOTES:

1. THE CONTRACTOR IS ALLOWED TO RE-USE EXISTING DEVICES, DISCONNECTS, & PANELS IF THE EQUIPMENT IS IN GOOD WORKING CONDITION. THE CONTRACTOR SHALL CLEAN & REPAIR THE EXISTING DEVICES AS NEEDED IF THE CONTRACTOR CHOOSES TO RE-USE.
2. REMOVE EXISTING LIGHT FIXTURES, DISCONNECTS, OUTLETS, BOXES, WIRING, CONDUIT, ETC. AND OFFER TO OWNER. IF OWNER REFUSES, ELECTRICAL CONTRACTOR SHALL REMOVE FROM SITE AND PROPERLY AND LEGALLY DISPOSE.
3. REMOVE PANELS, ASSOCIATED CIRCUITS, AND FEEDER.
4. REMOVE EXISTING DEVICES FROM WALLS BEING DEMOLISHED. IF THEY OCCUR IN THE MIDDLE OF A CIRCUIT, MAKE THE REMAINDER OF THE CIRCUIT CONTINUOUS.
5. RELOCATE EXISTING DEVICE AND EXTEND EXISTING CIRCUITRY.
6. MAINTAIN ALL REMAINING EXISTING CIRCUITS WHERE INTERRUPTED BY DEMOLITION WORK. PROVIDE WIRING AND CONDUIT TO RESTORE CONTINUOUS CIRCUIT INTEGRITY.
7. PROTECT EXISTING ELECTRICAL EQUIPMENT AND INSTALLATIONS INDICATED TO REMAIN. IF DAMAGED OR DISTURBED IN THE COURSE OF THE WORK, REMOVE DAMAGED PORTIONS AND INSTALL NEW PRODUCTS OF EQUAL CAPACITY, QUALITY, AND FUNCTIONALITY.
8. CONTACT TEXAS 811 FOR IDENTIFICATION OF ALL UNDERGROUND UTILITIES PRIOR TO REMOVAL.
9. EXISTING ROUTING OF CIRCUITS/FEEDERS ARE INDICATED ON DRAWINGS FOR REFERENCE ONLY. CONTRACTOR IS RESPONSIBLE FOR VERIFYING EXACT LOCATIONS OF FEEDERS/CIRCUITS PRIOR TO ANY EXCAVATION. CONTRACTOR SHALL BARE ALL COST OF RESTORING EXISTING ELECTRICAL FUNCTIONALITY SHOULD ANY EXISTING UNDERGROUND ELECTRICAL UTILITIES BE DAMAGED DURING THE COURSE OF CONSTRUCTION.



1 Electrical Demolition Plan
1/8" = 1'-0" Refer to Architectural Drawings for All Dimensions

1304 BERTRAND DRIVE SUITE F7
LAFAYETTE, LOUISIANA 70506
(337) 234-7474 • FAX (337) 234-7774

Mechanical Contact: Hogan Guidry
hogan@meconsulting.com
Electrical Contact: David Carroll
david@meconsulting.com

PROJECT No.: 21198.00

PRELIMINARY
NOT FOR CONSTRUCTION, BIDDING, OR AS A BASIS FOR ISSUING A PERMIT. DOCUMENTS PREPARED BY DAVID CARROLL TX#137373 WITH M&E CONSULTING, INC.

**SMITH BUILDING RENOVATION
SPINDLETOP CENTER**

655 S. 8TH Street
BEAUMONT, TX 77701

ISSUED FOR SCHEMATIC DESIGN
DATE: _____

DESIGN DEVELOPMENT
DATE: 04-18-22

BIDS & CONSTRUCTION
DATE: _____

REVISION: _____
DATE: _____

REVISION: _____
DATE: _____

REVISION: _____
DATE: _____

DRAWINGS SHEET TITLE
ELECTRICAL DEMOLITION PLAN

SHEET NUMBER
E100

21032
PROJECT NUMBER

PRELIMINARY
NOT FOR CONSTRUCTION, BIDDING, OR AS A BASIS FOR ISSUING A PERMIT. DOCUMENTS PREPARED BY DAVID CARROLL TX#137373 WITH M&E CONSULTING, INC.

SMITH BUILDING RENOVATION
SPINDLETOP CENTER

655 S. 8TH Street
BEAUMONT, TX 77701

ISSUED FOR SCHEMATIC DESIGN
DATE: _____
DESIGN DEVELOPMENT
DATE: 04-18-22
BIDS & CONSTRUCTION
DATE: _____
REVISION: _____
DATE: _____
REVISION: _____
DATE: _____

DRAWINGS SHEET TITLE
LIGHTING PLAN

SHEET NUMBER
E200

PROJECT NUMBER
21032

LIGHTING NOTES:
1. HATCHED FIXTURES INDICATE EMERGENCY BATTERY PACK FIXTURES. CIRCUIT BATTERY PACKS AHEAD OF SWITCHES.

LIGHTING NOTES
1 THIS SPACE TO BE CONTROLLED BY CEILING MOUNTED OCCUPANCY SENSOR. PLACEMENT, QUANTITY AND TYPE TO BE DETERMINED BY MANUFACTURER. REFER TO ELECTRICAL SPECIFICATION 26 09 23.
2 1/2" CONDUIT WITH #12 TO EXISTING LIGHTING CIRCUIT IN THIS AREA.



1 Lighting Plan
1/8" = 1'-0" Refer to Architectural Drawings for All Dimensions

M&E CONSULTING

1304 BERTRAND DRIVE SUITE F7
LAFAYETTE, LOUISIANA 70506
(337) 234-7474 • FAX (337) 234-7774

Mechanical Contact: Hogan Guidry
hogan@mecconsulting.com
Electrical Contact: David Carroll
david@mecconsulting.com

PROJECT No.: 21198.00

PRELIMINARY
NOT FOR CONSTRUCTION, BIDDING, OR AS A BASIS FOR ISSUING A PERMIT. DOCUMENTS PREPARED BY DAVID CARROLL TX#137373 WITH M&E CONSULTING, INC.

SMITH BUILDING RENOVATION
SPINDLETOP CENTER
655 S. 8TH Street
BEAUMONT, TX 77701

ISSUED FOR SCHEMATIC DESIGN
DATE: _____
DESIGN DEVELOPMENT
DATE: 04-18-22
BIDS & CONSTRUCTION
DATE: _____
REVISION: _____
DATE: _____
REVISION: _____
DATE: _____
REVISION: _____
DATE: _____

DRAWINGS SHEET TITLE
POWER & SPECIAL SYSTEMS PLAN

SHEET NUMBER
E300
21032
PROJECT NUMBER

- ELECTRICAL NOTES**
- 1 JUNCTION BOX FOR HARDWIRE CONNECTION TO ADULT CHANGING TABLE. VERIFY EXACT LOCATION OF BOX PER MANUFACTURER'S INSTALLATION INSTRUCTIONS.
 - 2 1" CONDUIT WITH PULL STRING/CABLE INDICATED TO NEAREST WALL WITH ACCESSIBLE CEILING.

OFFICES TO BE EITHER RE-WIRED OR ADDITIONAL OUTLETS AND CIRCUITS TO BE PROVIDED.

EXISTING DISTRIBUTION PANEL BOARDS - TO REMAIN (ALTERNATE BID ITEM TO REPLACE)
EXISTING PANEL "E"
EXISTING JUNCTION BOX
EXISTING PANEL

COMMUNICATIONS BACKBOARD
VERIFY

EXISTING PANELS "D" & "D1"

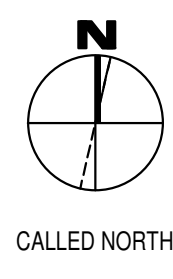
VERIFY

CORR. S143

EXISTING PANEL "C"

EXISTING 120/240 PANEL & TRANSFORMER
EXISTING COMMUNICATIONS BACKBOARD TO REMAIN

EXISTING PANELS "B" & "B1" BREAK ROOM



1 Power & Special Systems Plan
1/8" = 1'-0" Refer to Architectural Drawings for All Dimensions

M&E CONSULTING
1304 BERTRAND DRIVE SUITE F7
LAFAYETTE, LOUISIANA 70506
(337) 234-7474 • FAX (337) 234-7774
Mechanical Contact: Hogan Guidry
hogan@meconsulting.com
Electrical Contact: David Carroll
david@meconsulting.com
PROJECT No.: 21198.00

PRELIMINARY
NOT FOR CONSTRUCTION, BIDDING, OR AS A BASIS FOR ISSUING A PERMIT. DOCUMENTS PREPARED BY DAVID CARROLL TX#137373 WITH M&E CONSULTING, INC.

SMITH BUILDING RENOVATION
SPINDLETOP CENTER
655 S. 8TH Street
BEAUMONT, TX 77701

ISSUED FOR SCHEMATIC DESIGN DATE: _____
DESIGN DEVELOPMENT DATE: 04-18-22
BIDS & CONSTRUCTION DATE: _____
REVISION: _____ DATE: _____
REVISION: _____ DATE: _____
REVISION: _____ DATE: _____

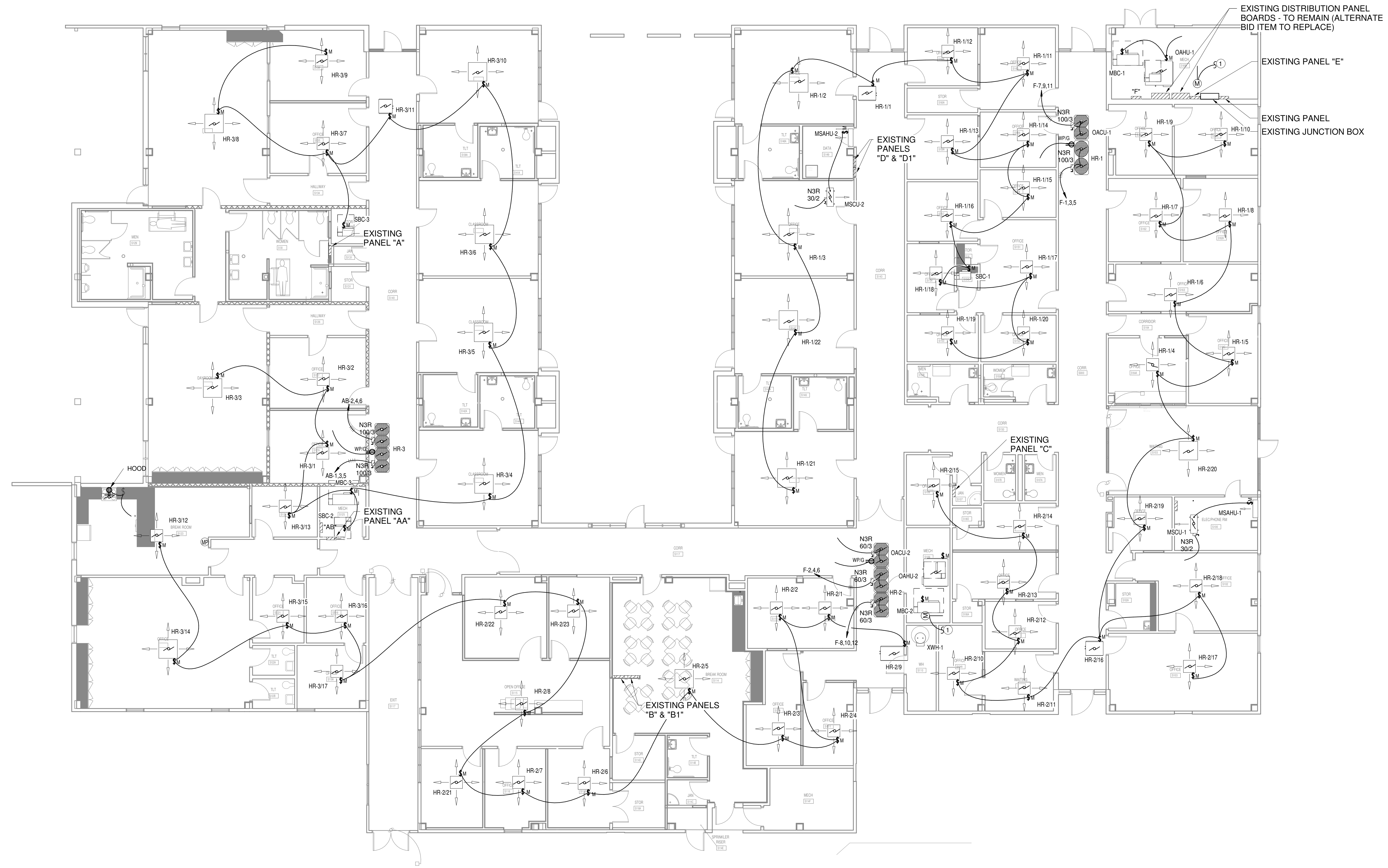
DRAWINGS SHEET TITLE
MECHANICAL POWER PLAN

SHEET NUMBER
E400

21032
PROJECT NUMBER

GENERAL ELECTRICAL NOTES:
1. REMOVE ALL ELECTRICAL ASSOCIATED WITH MECHANICAL EQUIPMENT BEING REMOVED.

ELECTRICAL NOTES
1. 1/2" CONDUIT WITH 3#12 TO NEAREST AVAILABLE 120V POWER CIRCUIT.



1 Mechanical Power Plan
1/8" = 1'-0" Refer to Architectural Drawings for All Dimensions

1304 BERTRAND DRIVE SUITE F7
LAFAYETTE, LOUISIANA 70506
(337) 234-7474 • FAX (337) 234-7774

Mechanical Contact: Hogan Guidry
hogan@meconsulting.com
Electrical Contact: David Carroll
david@meconsulting.com

PROJECT No.: 21198.00

PRELIMINARY

NOT FOR CONSTRUCTION, BIDDING, OR AS A BASIS FOR ISSUING A PERMIT. DOCUMENTS PREPARED BY DAVID CARROLL TX#137373 WITH M&E CONSULTING, INC.

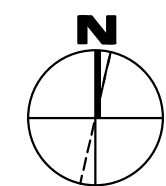
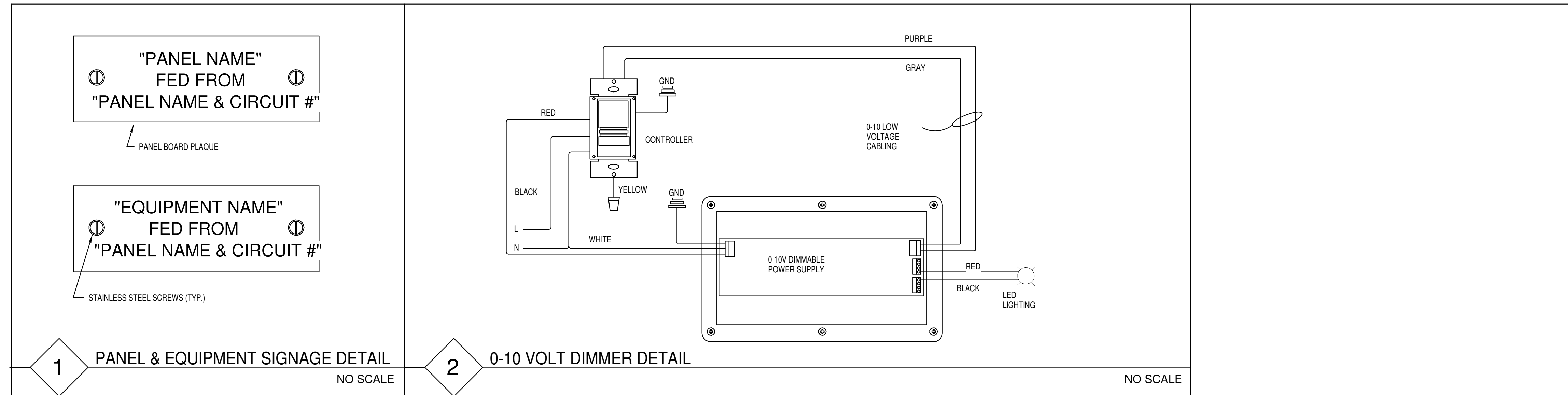
SMITH BUILDING RENOVATION
SPINDLETOP CENTER
655 S. 8TH STREET
BEAUMONT, TX 77701

ISSUED FOR SCHEMATIC DESIGN
DATE: _____
DESIGN DEVELOPMENT
DATE: 04-18-22
BIDS & CONSTRUCTION
DATE: _____
REVISION: _____
DATE: _____
REVISION: _____
DATE: _____
REVISION: _____
DATE: _____

DRAWINGS SHEET TITLE
ELECTRICAL SCHEDULE & DETAILS

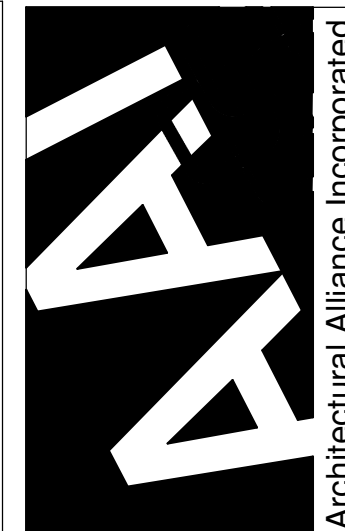
SHEET NUMBER
E500
21032
PROJECT NUMBER

TYPE MARK	DESCRIPTION	LAMP		VOLTS	MANUFACTURER	MODEL	COMMENTS
		No.	TYPE				
A2	2'x4' LED LAY-IN TROFFER	-	LED	120	METALUX	24CZ2-30HE-S-UNV-L835-CD1	
A2E	2'x4' LED LAY-IN TROFFER W/ BATTERY BACKUP	-	LED	120	METALUX	24CZ2-30HE-S-UNV-EL14W-L835-CD1	
A3	2'x4' LED LAY-IN TROFFER	-	LED	120	METALUX	24CZ2-50HE-S-UNV-L835-CD1	
A3E	2'x4' LED LAY-IN TROFFER W/ BATTERY BACKUP	-	LED	120	METALUX	24CZ2-50HE-S-UNV-EL14W-L835-CD1	
A5	2'x4' LED LAY-IN TROFFER	-	LED	120	METALUX	24CZ2-75HE-S-UNV-L835-CD1	
B2	2'x2' LED LAY-IN TROFFER	-	LED	120	METALUX	22CZ2-34HE-S-UNV-L835-CD1	
B2E	2'x2' LED LAY-IN TROFFER W/ BATTERY BACKUP	-	LED	120	METALUX	22CZ2-34HE-S-UNV-EL14W-L835-CD1	
C2	2' LED STRIP LIGHT	-	LED	120	METALUX	2SNLED-LD5-26SL-LN-UNV-CD1	
C4	4' LED STRIP LIGHT	-	LED	120	METALUX	4SNLED-LD5-46SL-LN-UNV-CD1	
X1	SINGLE FACE EXIT LIGHT	-	LED	120	SURE-LITES	CX7-1	



CALLED NORTH

1304 BERTRAND DRIVE SUITE F7
LAFAYETTE, LOUISIANA 70506
(337) 234-7474 • FAX (337) 234-7774
Mechanical Contact: Hogan Guidry
hogan@meconsulting.com
Electrical Contact: David Carroll
david@meconsulting.com
CONSULTING PROJECT No.: 21198.00



350 Pine Street, Suite 720
Beaumont, Texas 77701
TEL: (409) 896-1746
FAX: (409) 896-1745
J. RICH CLARK, A.L.A.
RONALD N. JONES, A.L.A.
www.archalliance.com

PRELIMINARY
NOT FOR CONSTRUCTION, BIDDING, OR AS A BASIS FOR ISSUING A PERMIT. DOCUMENTS PREPARED BY DAVID CARROLL TXF137373 WITH M&E CONSULTING, INC.

Branch Panel: AB
Location: MECH S125 Volts: 120/208 Wye A.I.C. Rating:
Mounting: Surface Phases: 3 Mains Type:
Enclosure: Type 1 Wires: 4 Mains Rating: 225 A

General Schedule Notes: Verify proper working clearances per N.E.C. prior to installation.

Notes	#	Circuit Description	Trip	Poles	Wire	Gnd.	C.	A	B	C	C.	Gnd.	Wire	Poles	Trip	Circuit Description	#	Notes	
	1	HR-3A	70	3	3			4128	4128					3	3	70	HR-3B	2	
--	3	--	--	--	--	--	--		4128	4128		--	--	--	--	--	--	4	--
--	5	--	--	--	--	--	--			4128	4128	--	--	--	--	--	--	6	--
	7																	8	
	9																	10	
	11																	12	
	13																	14	
	15																	16	
	17																	18	
	19																	20	
	21																	22	
	23																	24	
	25																	26	
	27																	28	
	29																	30	
	31																	32	
	33																	34	
	35																	36	
	37																	38	
	39																	40	
	41																	42	

Total Load:		8 kVA	8 kVA	8 kVA
Total Amps:		69 A	69 A	69 A
Load Classification	Connected Load	Demand Factor	Estimated Demand	Panel Totals
HVAC	24768 VA	100.00%	24768 VA	
				Total Conn. Load: 25 kVA
				Total Est. Demand: 25 kVA
				Total Conn.: 69 A
				Total Est. Demand: 69 A

Panel Schedule Notes: (Notes below do not necessarily appear in panel schedule)
 1. VERIFY BREAKER SIZE PER EQUIPMENT MANUFACTURER'S RECOMMENDED NAME PLATE RATING PRIOR TO SHOP DRAWINGS PHASE OF PROJECT.
 2. CIRCUIT VIA POLE LIGHTING CONTACTOR. CONTROL WITH (2) CIRCUIT INTERMATIC OR EQUAL ASTRONOMICAL TIME CLOCK WITH BATTERY BACKUP. PHOTOCELL "ON" TIME CLOCK "OFF".
 3. PROVIDE GFCI PROTECTED CIRCUIT BREAKER.
 4. CONDUIT, WIRE, AND BREAKER SIZE PER MANUFACTURER'S REQUIREMENTS....

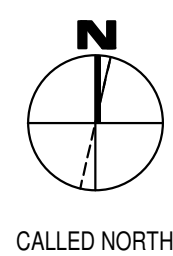
Branch Panel: F
Location: MECH S160B Volts: 120/208 Wye A.I.C. Rating:
Mounting: Surface Phases: 3 Mains Type:
Enclosure: Type 1 Wires: 4 Mains Rating: 225 A

General Schedule Notes: Verify proper working clearances per N.E.C. prior to installation.

Notes	#	Circuit Description	Trip	Poles	Wire	Gnd.	C.	A	B	C	C.	Gnd.	Wire	Poles	Trip	Circuit Description	#	Notes	
	1	HR-1	80	3	3			4992	3168					3	3	50	HR-2A	2	
--	3	--	--	--	--	--	--		4992	3168		--	--	--	--	--	--	4	--
--	5	--	--	--	--	--	--			4992	3168	--	--	--	--	--	--	6	--
	7	OACU-1	70	3	3			4128	3168					3	3	20	HVAC CORR S117C	8	
--	9	--	--	--	--	--	--		4128	3168		--	--	--	--	--	--	10	--
--	11	--	--	--	--	--	--			4128	3168	--	--	--	--	--	--	12	--
	13																	14	
	15																	16	
	17																	18	
	19																	20	
	21																	22	
	23																	24	
	25																	26	
	27																	28	
	29																	30	
	31																	32	
	33																	34	
	35																	36	
	37																	38	
	39																	40	
	41																	42	

Total Load:		15 kVA	15 kVA	15 kVA
Total Amps:		129 A	129 A	129 A
Load Classification	Connected Load	Demand Factor	Estimated Demand	Panel Totals
HVAC	46368 VA	100.00%	46368 VA	
				Total Conn. Load: 46 kVA
				Total Est. Demand: 46 kVA
				Total Conn.: 129 A
				Total Est. Demand: 129 A

Panel Schedule Notes: (Notes below do not necessarily appear in panel schedule)
 1. VERIFY BREAKER SIZE PER EQUIPMENT MANUFACTURER'S RECOMMENDED NAME PLATE RATING PRIOR TO SHOP DRAWINGS PHASE OF PROJECT.
 2. CIRCUIT VIA POLE LIGHTING CONTACTOR. CONTROL WITH (2) CIRCUIT INTERMATIC OR EQUAL ASTRONOMICAL TIME CLOCK WITH BATTERY BACKUP. PHOTOCELL "ON" TIME CLOCK "OFF".
 3. PROVIDE GFCI PROTECTED CIRCUIT BREAKER.
 4. CONDUIT, WIRE, AND BREAKER SIZE PER MANUFACTURER'S REQUIREMENTS....



CALLLED NORTH

1304 BERTRAND DRIVE SUITE F7
LAFAYETTE, LOUISIANA 70506
(337) 234-7474 • FAX (337) 234-7774
Mechanical Contact: Hogan Guidry
hogan@meconsulting.com
Electrical Contact: David Carroll
david@meconsulting.com
PROJECT No.: 21198.00

SMITH BUILDING RENOVATION
SPINDLETOP CENTER
655 S. 8TH STREET
BEAUMONT, TX 77701

ISSUED FOR SCHEMATIC DESIGN
DATE: _____
DESIGN DEVELOPMENT
DATE: 04-18-22
BIDS & CONSTRUCTION
DATE: _____
REVISION: _____
DATE: _____
REVISION: _____
DATE: _____
REVISION: _____
DATE: _____

DRAWINGS SHEET TITLE
ELECTRICAL PANEL SCHEDULES

SHEET NUMBER
E600
PROJECT NUMBER
21032

